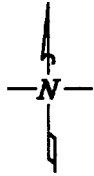


CERTIFICATE OF LOCATION OF GOVERNMENT CORNER

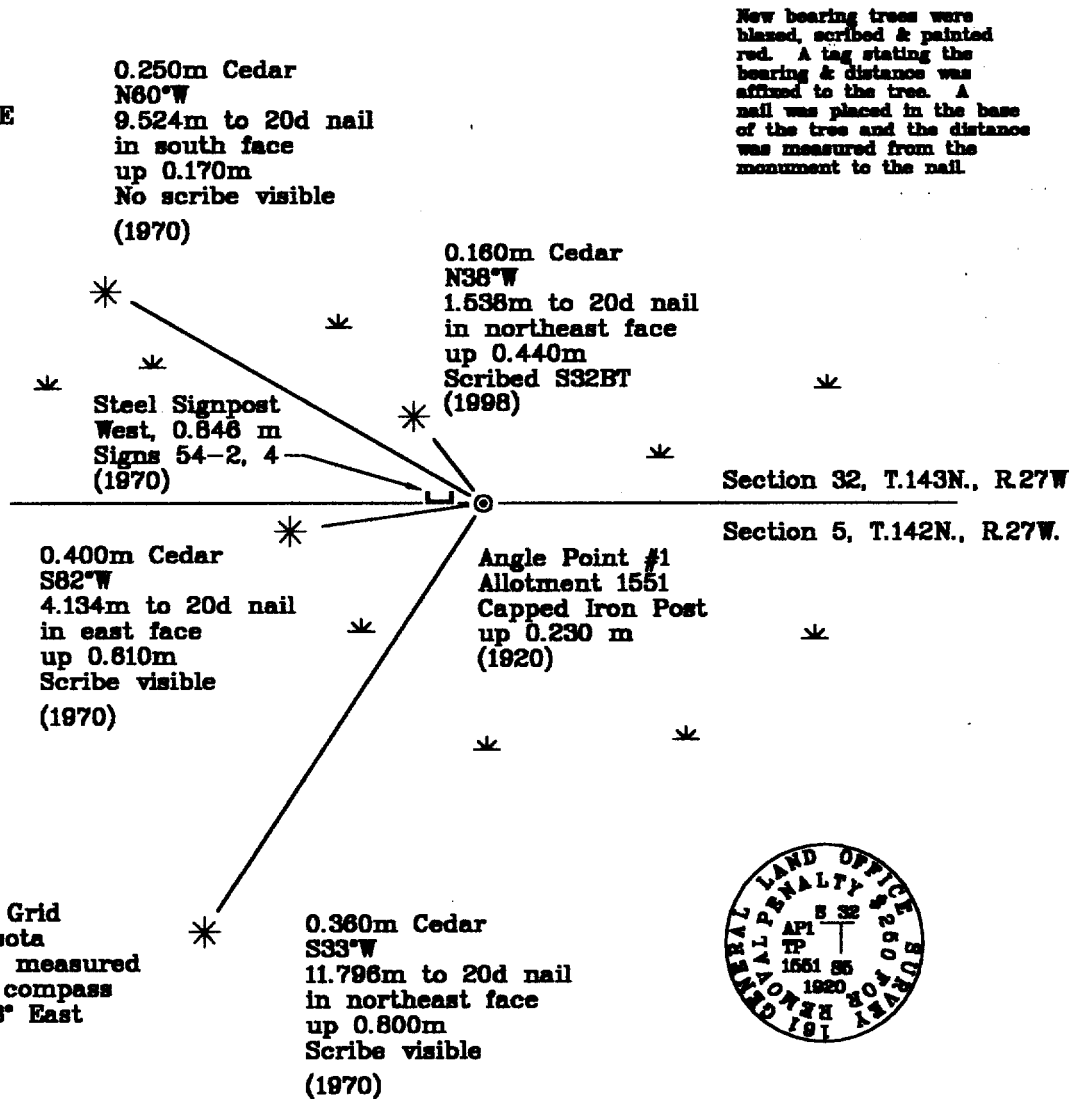
Angle Point #1 on line between Section 5, Township 142 North, Range 27 West, and Section 32, Township 143 North, Range 27 West, of the Fifth Principal Meridian, Cass County, Minnesota.

On August 18, 1998, Northern Lights Surveying and Mapping, Inc. found, accepted, and maintained the 1920 General Land Office (G.L.O.) point established 10 chains east of the northwest corner of Section 5.

SKETCH OF REFERENCE TIES & EVIDENCE T.143N., R.27W.

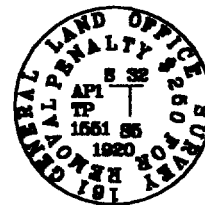


NOT TO SCALE



New bearing trees were blazed, scribed & painted red. A tag stating the bearing & distance was affixed to the tree. A nail was placed in the base of the tree and the distance was measured from the monument to the nail.

Bearings are Grid North, Minnesota Central Zone, measured with a hand compass adjusted to 3° East declination.



Statement of evidence relative to this corner location is on the back of this page

I hereby certify that this survey, plan, or report was prepared by me or under my direct supervision and that I am a duly licensed Land Surveyor under the laws of the State of Minnesota.

Joseph Foster 4-28-99
Joseph Foster Date
Licensed Land Surveyor No. 25342
NORTHERN LIGHTS SURVEYING & MAPPING, INC.

OFFICE OF THE COUNTY RECORDER 412423
County of Cass

I hereby certify that this document was filed in the Recorder's office.

Time: 10:05 A.M. Date: 5-5-99
Recorder Claudine Taylor
By K.F. Deputy
DOCUMENT NO. 412423

Statement of Evidence

Angle Point #1 on line between Section 5, Township 142 North, Range 27 West, and Section 32, Township 143 North, Range 27 West, of the Fifth Principal Meridian, Cass County, Minnesota.

1920; General Land Office (G.L.O.) survey notes; government survey crew set an iron post 1" (0.025m) in diameter, 3' (0.914m) long, with a stamped cap for the point, set 10 chains east of the northwest corner of Section 5, on line. No ties were established at this time.

Said records are on file with the Secretary of State, St. Paul, Minnesota; copies of these records are on file with the Cass County Surveyor's Office, Walker, Minnesota.

June, 1970; U.S.D.A.-F.S. T.143N. R.27W. Corner Restoration Book #2, p. 58; Kurt Krause found the G.L.O. iron post in place and perpetuated the point by establishing the following:

8" (0.203m) Cedar S33°W 39.8 Feet (12.070m) Scribed AP S5 BT	9" (0.229m) Cedar S82°W 13.6 Feet (4.145m) Scribed AP S5 BT	7" (0.178m) Cedar N60°W 31.0 Feet (9.449m) Scribed AP S32 BT	Steel Signpost West 2.8 Feet (0.853m) Signs 54-2, 4
---	--	---	--

1970; William Okerman, RLS No. 6807, filed Certificate of Location of Government Corner Document #222942 with the Cass County Recorder's Office.

March, 1993; U.S.D.A.-F.S. T.143N. R.27W. Corner Restoration Book #2, p. 58; R. Main found the point and its accessories in good condition. He placed new Bearing Tree tags and painted the accessories red.

August, 1998; Joe Foster of Northern Lights Surveying and Mapping, Inc. cruised to, found, and GPS'd the angle point for control purposes. The corner was found in good condition, up 0.230m. The corner was maintained and the following references observed:

0.360m Cedar S33°W 11.796m to 20d nail in northeast face up 0.800m Scribe visible (1970)	0.400m Cedar S82°W 4.134m to 20d nail in east face up 0.610m Scribe visible (1970)	0.250m Cedar N60°W 9.524m to 20d nail in south face up 0.170m No scribe visible (1970)	Steel Signpost West 0.846 m Signs 54-2, 4
--	--	--	--

As the N60°W bearing tree was found in poor condition, the following new reference was established:

0.160m Cedar
N38°W
1.538m to 20d nail
in northeast face
up 0.440m
Scribed S32BT

Northern Lights Surveying and Mapping, Inc. Boy River Township Field Book #4, pp. 55, 56, on file at the U.S.D.A.-F.S. office in Cass Lake, Minnesota.

Coordinates:

Cass County North

Northing = 69329.515 meters
Easting = 158665.287 meters

State Plane Coordinate System
Minnesota Central Zone
NAD 83

Northing = 339318.041 meters
Easting = 808792.760 meters

Latitude = 47°09'10".86081North
Longitude = 94°08'02".82431 West