

CERTIFICATE OF LOCATION OF GOVERNMENT CORNER

North Quarter Corner, Section 27, Township 143 North, Range 27 West, of the Fifth Principal Meridian, Cass County, Minnesota.

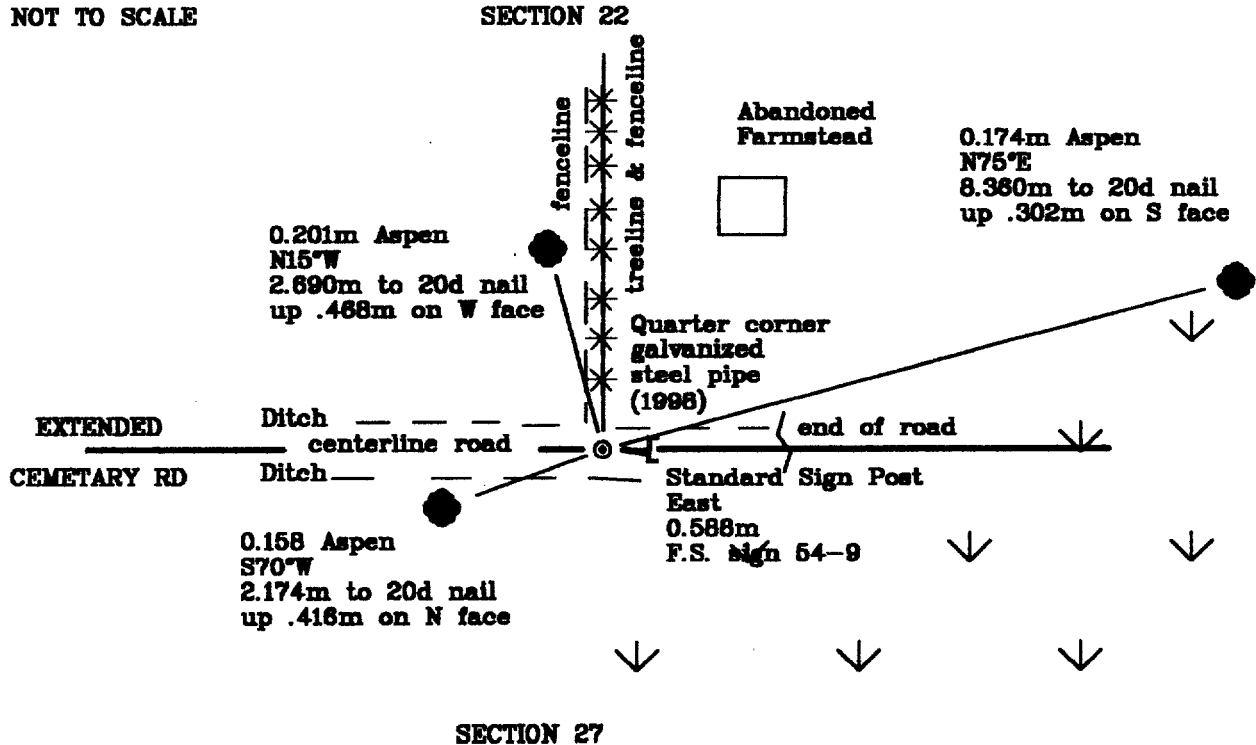
December 9, 1998; Northern Lights Surveying and Mapping, Inc., (NLSM), set aluminum rod with a stamped aluminum cap in line with a tree line running north, and in the center-line of Cemetery Road, for the quarter corner position.

SKETCH OF REFERENCE TIES & EVIDENCE

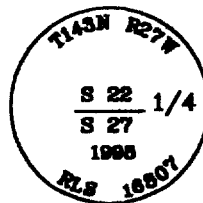
T.143N., R.27W.



NOT TO SCALE



Bearings are Grid
North, Minnesota
Central Zone, measured
with a hand compass
adjusted to 3° East
declination.



New bearing trees were blazed, scribed & painted red. A tag stating the bearing & distance was affixed to the tree. A nail was placed in the base of the tree and the distance was measured from the monument to the nail.

Statement of evidence relative to this corner location is on the back of this page

I hereby certify that this survey, plan, or report was prepared by me or under my direct supervision and that I am a duly Licensed Land Surveyor under the laws of the State of Minnesota.

LaVerne Leuelling 4-24-1999
 LaVerne Leuelling Date

Licensed Land Surveyor No. 18089
 NORTHERN LIGHTS SURVEYING & MAPPING, INC.

OFFICE OF THE COUNTY RECORDER 412253
 County of Cass

I hereby certify that this document was filed in the Recorder's office.

Time: 12:35 P.M. Date: 4-29-99

Recorder Claudine Taylor

By K.F. Deputy

DOCUMENT NO. 412253

Statement of Evidence

North Quarter Corner, Section 27, Township 143 North, Range 27 West, of the Fifth Principal Meridian, Cass County, Minnesota.

September, 1873; General Land Office (G.L.O.) survey notes; Deputy Surveyor William Allen set a wooden post for the quarter corner and referenced it with the following:

6" (0.152m) Cedar	6" (0.152m) Cedar
N33°E	S62°W
8 Links (1.609m)	11 Links (2.213m)

In the copy of the GLO field notes kept by the USDA-Forest Service, the overall distance for the line between sections 22 & 27 was 80.46 chains. The notes clearly indicate that the corner was set 40.13 chains from the northeast corner of section 27. The copy of the GLO field notes kept in the Cass County & Secretary of State's office show a distance of 40.26 (or at the midpoint of the section line). That copy, however, indicates tampering, as it is apparent that a "1" has been modified into a "2".

Said records are on file with the Secretary of State, St. Paul, Minnesota. Copies of these records are on file with the Cass County Surveyor's Office, Walker, Minnesota.

This corner fell in a swamp. The western edge of that swamp lay westerly of the quarter corner by 13.83 chains (912.78 feet).

June 1916: In his field book #152, John Curo RLS 1428 laid out the Cemetery Road as far as the northwest corner of Section 27.

1989; United States Department of Agriculture - Forest Service (U.S.D.A.-F.S.) T.143N R.27W. Field Book #1, p.40; Curt Krause chained in from the section corner to the west and searched, but found no evidence of corner.

November 31, 1998; Northern Lights Survey and Mapping, Inc., searched the area using G.L.O. swamp calls. The G.L.O. distance was 912.78 feet and Northern Lights' distance was 972 feet ± 75 feet. GPS was also used to locate a tree line. That occupation consisted of north to south running large White Spruce trees. A fence line was entangled in the trees and another paralleled it approximately 20 feet to the west. The farmstead had been destroyed. According to Guy Robbins, a local source of information, the farm had been abandoned in the 1950s. The occupation line would have been created near the time of the creation of Cemetery Road. At the end of the road a large stash of 50± cedar logs were stacked for future use as road material. Somewhere in that pile, undoubtedly, are the remains of the original bearing trees.

December 1998; NLSM crew of Leuelling and Heinle returned to site to use GPS on the location of corner determined by Cemetery Road & the tree line. The position was monumented with 3.050m long, 0.019m diameter aluminum rod with a 0.083m diameter aluminum stamped cap, up .304m, and the following references were established:

0.158 Aspen	0.201m Aspen	0.174m Aspen	Standard Sign Post
S70°W	N15°W	N75°E	East
2.174m to 20d nail	2.690m to 20d nail	8.360m to 20d nail	0.588m
up .418m on N face	up .468m on W face	up .302m on S face	F.S. sign 54-9

After concluding that the east-west position of the occupation line was compatible with the GLO feature calls, it was decided to accept that line and the centerline of the Cemetery Road as the best remaining evidence of where the original GLO Quarter Corner was located.

Coordinates:

State Plane Coordinate System
Minnesota Central Zone
NAD 83

Cass County North

Northing = 72465.492 meters
Easting = 162528.354 meters

Northing = 342,455.468 meters
Easting = 812,654.430 meters

Latitude = 47°10'52".22958 North
Longitude = 94°04'59".00470 West