

410195

I hereby certify that this document and the data contained herein was prepared by me or under my direct supervision.

Jane Kram SIGNATURE 2/12/99 DATE

Registration No. 23668

- Land Surveyor,  Professional Engineer,
- County Surveyor,  County Engineer.

OFFICE OF THE COUNTY RECORDER

County of Cass

I hereby certify that this document was filed in the Co. Recorders office at 1:05 P .M. on the 23rd day of February A.D., 1999

County Recorder Claudine Kaylor

By K.F. Deputy

DOCUMENT NO. 410195

# CERTIFICATE OF LOCATION OF GOVERNMENT CORNER

11.55 CHAINS NORTH OF E 1/4 CORNER

\*24 MEANDER Corner of Section 2 & 3, Township 141 N, Range 28 W, 5th P.M.

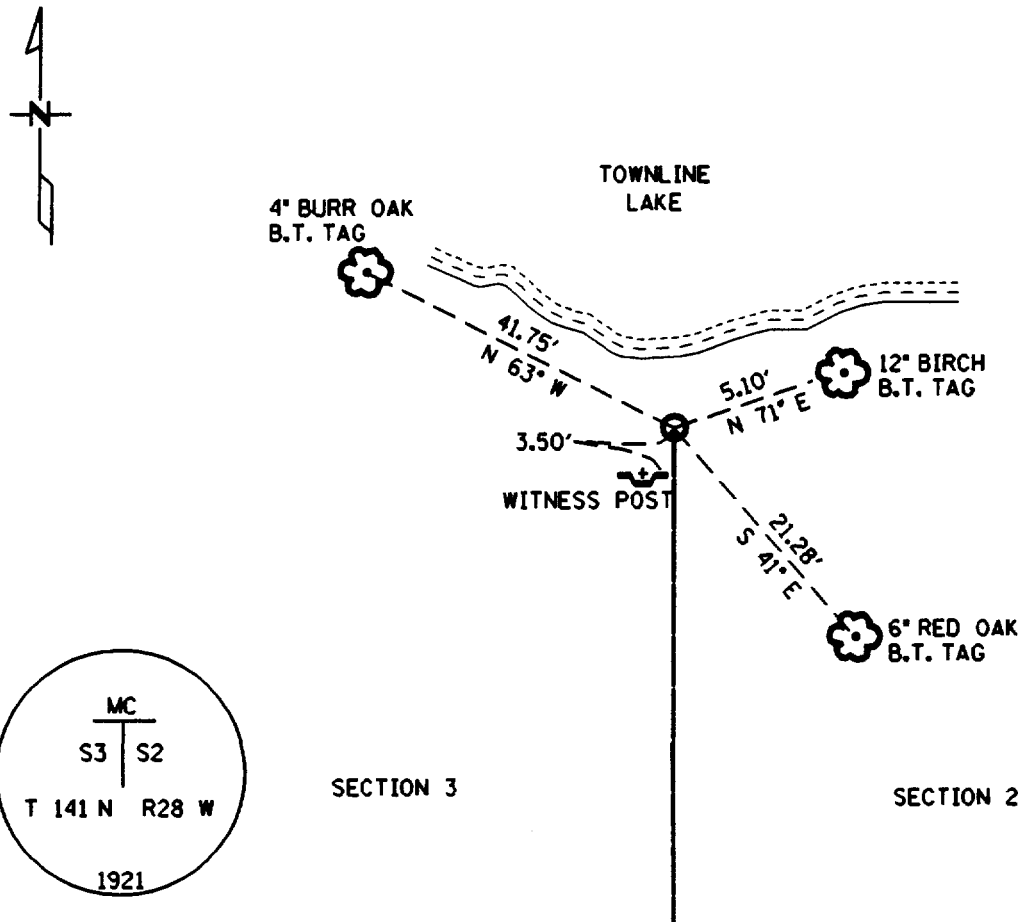
STATE OF MINNESOTA, County of CASS

At the corner location shown on the sketch:

On 6/26/97 found a GLO BRASS CAP MONUMENT UP 29 INCHES, 10 FEET SOUTHERLY OF  
DATE WATERS EDGE

left monument as found,  lowered monument,  removed monument (explain)

On \_\_\_\_\_ placed a \_\_\_\_\_  
DATE



Statement of evidence relative to this corner location is on back of page.

Statement of Evidence: Meander Corner #24, Sections 2&3, T. 141 N., R. 28 W., 5th P.M.

- 1874 US General Land Office survey set a wood post for this corner and marked the following bearings; 7" Birch S 49 W 14 links, 6" White Pine S 52 E 90 links.
- 1921 US General Land Office dependant resurvey found an old decayed stake and set a 1" x 36" I.P. with a brass cap. And marked the following bearings; 6" Red Oak S 59 1/2 E 16 links, 12" Birch N 35 3/4 W 27 links.
- 1988 On March 7, Curo Surveying, under contract with the US Forest Service, found the brass cap monument up 29" in a mound of rocks, 10' southerly of waters edge, and marked the following bearings; 4" Burr Oak N 63 W 41.75 ft., 9" Birch N 71 E 5 10 ft., 6" Red Oak S 41 E 21.28 ft.
- 1997 Minnesota Dept. Of Transportation found GLO monument in good condition, and set a steel sign post 3.50 ft. SW of corner. The Minnesota Department of Transportation accepts this position as the correct location for the corner.

For details and survey analysis, contact The Minnesota Department of Transportation District Surveys Office in Baxter, Minnesota.