

I hereby certify that this document and the data contained herein was prepared by me or under my direct supervision.

James Krum SIGNATURE 2/12/99 DATE

Registration No. 23668

- Land Surveyor, Professional Engineer,
- County Surveyor, County Engineer.

OFFICE OF THE COUNTY RECORDER

County of Cass

I hereby certify that this document was filed in the Co. Recorders office at 12:30 P.M. on the 23rd day of February A.D., 1999

County Recorder Claudene Kaylor

By K.F., Deputy

DOCUMENT NO. 410188

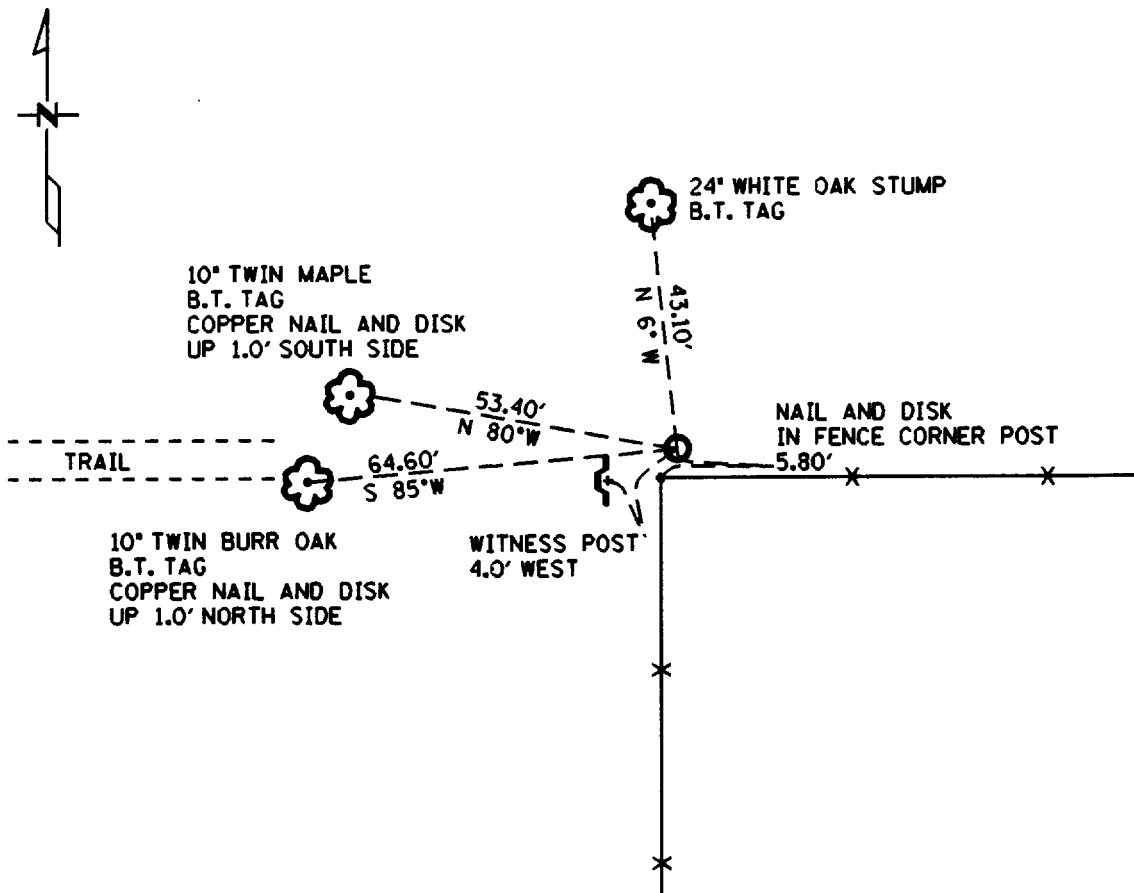
CERTIFICATE OF LOCATION OF GOVERNMENT CORNER

EAST 1/16 SE QUARTER Corner of Section 3, Township 141 N, Range 28 W, 5th P.M.

STATE OF MINNESOTA, County of CASS

At the corner location shown on the sketch:

- On 6/26/97 found a GLO MONUMENT UP 0.1 FEET
DATE
- left monument as found, lowered monument, removed monument (explain)
- On _____ placed a _____
DATE



Statement of evidence relative to this corner location is on back of page.

Statement of Evidence: East 1/16 SE Quarter 3, T. 141 N., R. 28 W., 5th P.M.

1918 US General Land Office Survey set 1" x 36" Iron Pipe with a brass cap and marked the following bearings; 10" White Oak S 86 E 154 links, 5" White Oak N 6 1/2 W 65 links.

1997 Minnesota Dept. Of Transportation found GLO monument in good condition and marked the following bearings; 10" Maple N 80 W 53.40 ft., Twin Burr Oak S 85 W 64.60 ft., steel sign post 4.0 ft. West. The Minnesota Dept. Of Transportation accepts this position as the correct location for the corner.

For details and further survey analysis, contact the Minnesota Dept. Of Transportation District Surveys Office in Baxter, Minnesota.