

410187

I hereby certify that this document and the data contained herein was prepared by me or under my direct supervision.

James Kram SIGNATURE 2/12/99 DATE

Registration No. 23668

- Land Surveyor,  Professional Engineer,
- County Surveyor,  County Engineer,

OFFICE OF THE COUNTY RECORDER

County of Cass

I hereby certify that this document was filed in the Co. Recorders office at 12:25 P .M. on the 23rd day of February A.D., 19 99

County Recorder Claudine Kaylor

By K.F. Deputy

DOCUMENT NO. 410187

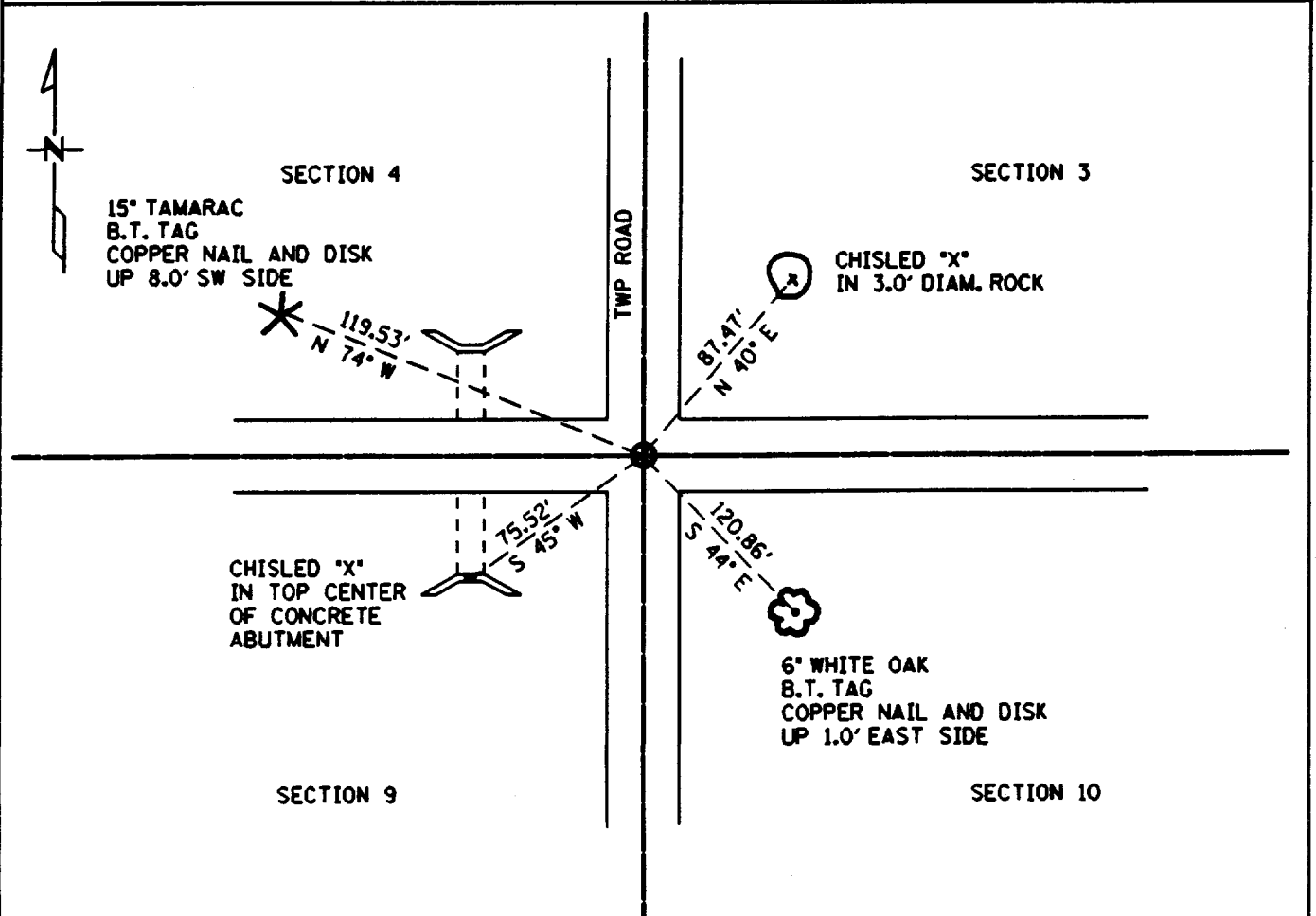
# CERTIFICATE OF LOCATION OF GOVERNMENT CORNER

NORTHEAST Corner of Section 9, Township 141 N, Range 28 W, 5th P.M.

STATE OF MINNESOTA, County of CASS

At the corner location shown on the sketch:

- On 6/26/97 found a 2 INCH IRON PIPE WITH A BRASS CAP DOWN 0.10 FEET AT  
DATE INTERSECTION OF T.H. 200 AND A N-S TWP ROAD
- left monument as found,  lowered monument,  removed monument (explain)
- On \_\_\_\_\_ placed a \_\_\_\_\_  
DATE



Statement of evidence relative to this corner location is on back of page.

Statement of Evidence: Northeast Corner of Section 9, T. 141 N. R. 28 W. 5th P.M.

- 1874 US General Land Office Survey set a wood post for this corner and marked the following bearings; 8" Poplar S 26 W 40 links, 26" White Pine S 65 E 59 links, 13" White Pine N 43 E 35 links.
- 1915 John Curo found original Government B.T.'s and set a 2 1/2 inch by 48 inch capped iron, and marked the following bearing; 12" Oak S 65 W 39.85 ft.
- 1919 US General Land Office found a 2 inch galvanized iron pipe, and marked the following bearings; 40" White Pine S 51 E 59 links, Decayed Pine stump N 46 1/2 E 35 links.
- 1919 Earl G. Harrington, US General Land Office surveyor set a 1" x 36" I.P. with a brass cap for the corner to sections 3-4-9 and 10 from which he marked the following bearings; 6" Poplar N 45 E 113 links, 18" White Oak S 66 1/2 W 61 links, 14" Poplar N 73 W 109 links, all of which were obliterated by the construction of the highway.
- 1982 On June 3, Walter E. Curo found a 6" spike 1 1/2 feet below the surface of the blacktop. The distance from the spike to the S 1/4 corner is 0.44 ft. Longer than the GLO distance and the distance from this spike to the E 1/4 corner is 0.56 ft. shorter than the GLO distance. I replaced the spike with a 2" x 36" I.P. with a brass cap.
- 1997 Minnesota Department of Transportation found a 2" x 36" I.P. with a brass cap and 1982 B.T.'s. The Minnesota Department of Transportation accepts this position as the correct location for the corner.

For details and survey analysis, contact The Minnesota Department of Transportation District Surveys Office in Baxter, Minnesota.