

# CERTIFICATE OF LOCATION OF GOVERNMENT CORNER

North Quarter Corner of Section 3, Township 138N, Range 32W, 5TH P.M.

STATE OF MINNESOTA, County of Cass

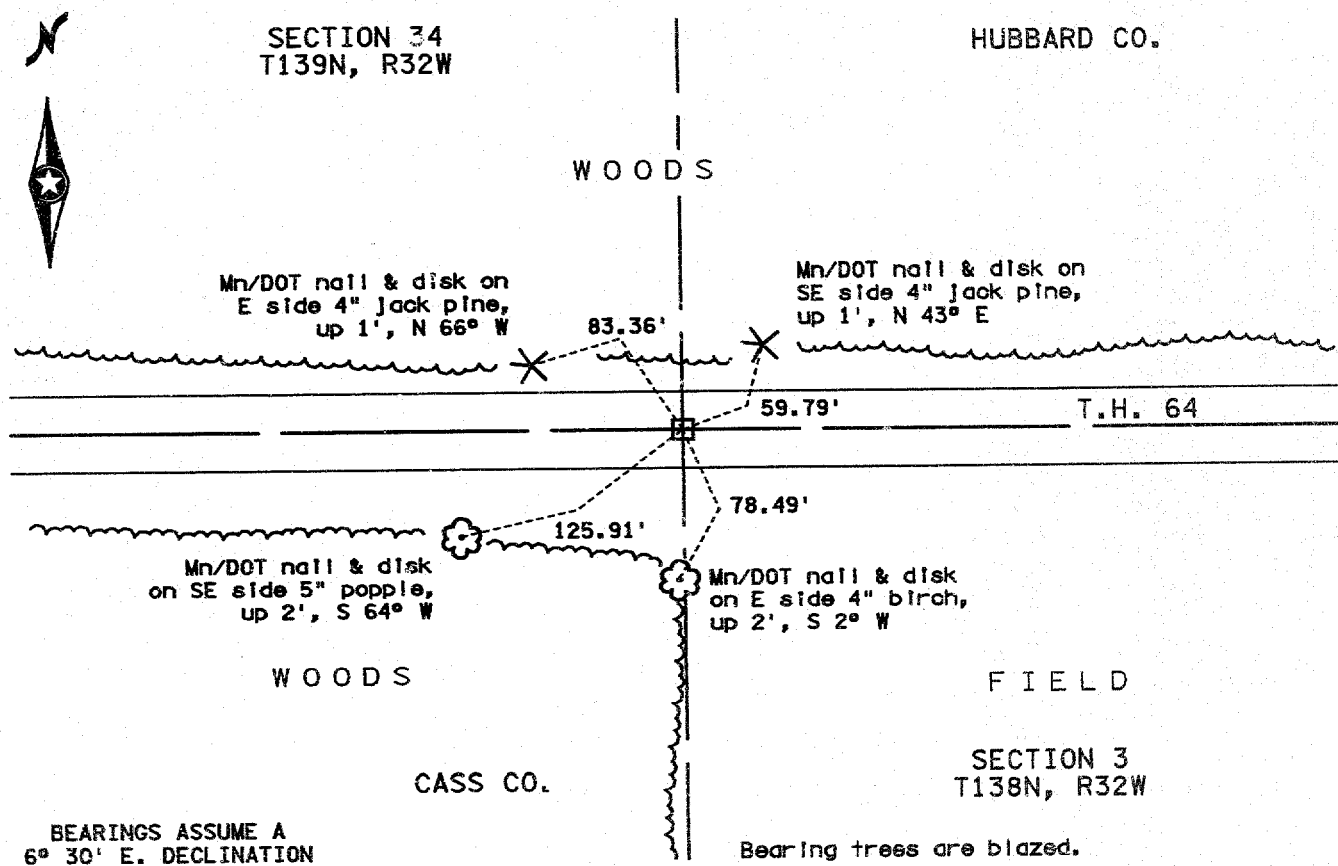
At the corner location shown on the sketch

ON 10-14-93 found 4"x4" concrete monument

left monument as found,  lowered monument,  removed monument (explain)

ON 10-14-93 placed a spike above concrete monument

### SKETCH OF REFERENCE TIES



BEARINGS ASSUME A  
6° 30' E. DECLINATION

Bearing trees are blazed.

Statement of evidence relative to this corner is on back of page 408858

I hereby certify that this document and the data contained herein was prepared by me or under my direct supervision.

Kenneth R. Douglas 4-10-97  
SIGNATURE DATE

Registration No. 14950  
 Land surveyor,  Professional Engineer  
 County Surveyor,  County Engineer

OFFICE OF THE COUNTY RECORDER  
County of Cass

I hereby certify that this document was filed in the Co. Recorders office at 1:55 P.M. on the 14th day of January A.D., 1999  
County Recorder Claudine Kaylor  
By R.J., Deputy

DOCUMENT NO. 408858

Statement of Evidence:

NORTH QUARTER CORNER OF SECTION 3, TOWNSHIP 138 NORTH,  
RANGE 32 WEST OF THE FIFTH PRINCIPAL MERIDIAN

The original Public Land Survey was run by Jacob W. Myers in 1860. A post was set to mark the corner and two bearing trees were recorded as accessories; a 9-inch Norway Pine North 40 degrees West 13 links, and a 17-inch Norway Pine South 17½ degrees East 49 links.

On September 21, 1927, A. R. Taubman, Assistant Hubbard County Engineer, recovered the post and bearing trees recorded by Myers in 1860. A concrete monument measuring 4 inches square at the top, 6 inches square at the bottom and 18 inches long was placed to mark this corner and triangular concrete witness monuments were placed North 52 degrees 30 minutes West 46.669 feet, and South 35 degrees 30 minutes West 46.669 feet.

On October 14, 1993, Todd Larson and Richard Hilliard of the Minnesota Department of Transportation recovered the concrete monument placed by Taubman in 1927 to mark this corner.

The location of this Public Land Survey Corner has been perpetuated by the recovery of the post and placement of the concrete monument by Taubman in 1927 and recovery of the concrete monument by Larson and Hilliard in 1993. An iron spike was placed above the concrete monument to mark this corner.

For additional information and recent survey measurements, contact the Surveys Office of the Minnesota Department of Transportation in Bemidji.