

CERTIFICATE OF LOCATION OF GOVERNMENT CORNER

Northeast Corner of Section 2, Township 138N, Range 32W, 5TH P.M.

STATE OF MINNESOTA, County of Cass

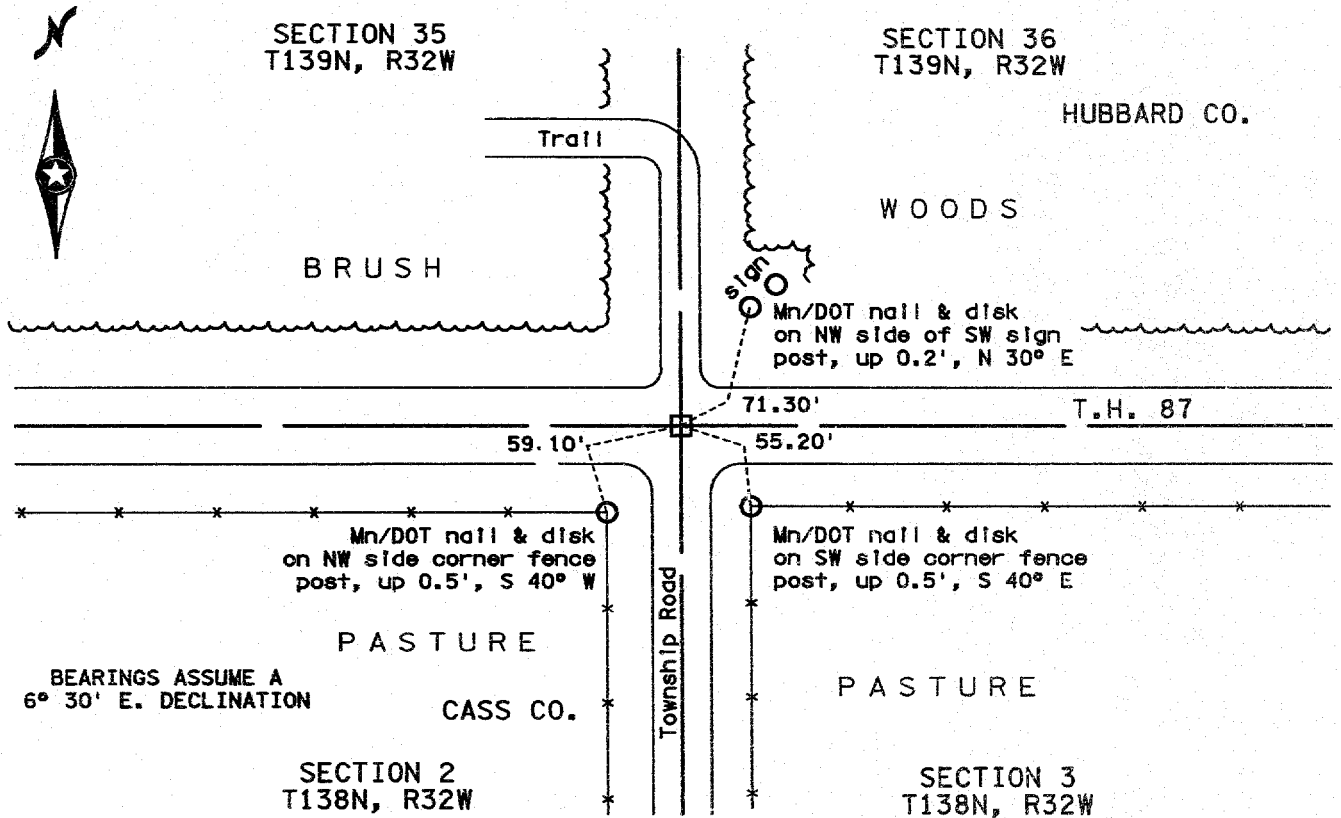
At the corner location shown on the sketch

- ON 10-14-93 found 8"x8" concrete monument

- left monument as found, lowered monument, removed monument (explain)

- ON 10-14-93 placed a spike above concrete monument

SKETCH OF REFERENCE TIES



Statement of evidence relative to this corner is on back of page 408855

I hereby certify that this document and the data contained herein was prepared by me or under my direct supervision.

Kenneth R. Donaghy 4-10-97
SIGNATURE DATE

Registration No. 14950
 Land surveyor, Professional Engineer
 County Surveyor, County Engineer

OFFICE OF THE COUNTY RECORDER

County of Cass

I hereby certify that this document was filed in the Co. Recorder's office at 1:40 P .M. on the 14th day of January A.D., 19 99

County Recorder Claudine Kaylor
 By K.F., Deputy

DOCUMENT NO. 408855

Statement of Evidence:

NORTHEAST CORNER OF SECTION 2, TOWNSHIP 138 NORTH,
RANGE 32 WEST OF THE FIFTH PRINCIPAL MERIDIAN

The original Public Land Survey was run by Jacob W. Myers in 1860. A post was set to mark the corner and four bearing trees were recorded as accessories; a 10-inch Pitch Pine North $67\frac{1}{2}$ degrees East 10 links, a 4-inch Pitch Pine South 48 degrees East 47 links, a 14-inch Pitch Pine South $7\frac{1}{2}$ degrees West 26 links, and a 9-inch Pitch Pine North $62\frac{1}{4}$ degrees West 22 links.

On September 21, 1927, A. R. Taubman, Assistant Hubbard County Engineer, recovered the post and bearing trees recorded by Myers in 1860. A concrete monument measuring 8 inches square and 36 inches long was placed to mark this corner and triangular concrete witness monuments were placed North 52 degrees West 46.669 feet, and North 38 degrees East 46.669 feet.

On October 14, 1993, Todd Larson and Richard Hilliard of the Minnesota Department of Transportation recovered the concrete monument placed by Taubman in 1927 to mark this corner.

The location of this Public Land Survey Corner has been perpetuated by the recovery of the post and placement of the concrete monument by Taubman in 1927 and recovery of the concrete monument by Larson and Hilliard in 1993. An iron spike was placed above the concrete monument to mark this corner.

For additional information and recent survey measurements, contact the Surveys Office of the Minnesota Department of Transportation in Bemidji.