

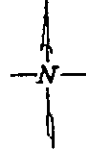
CERTIFICATE OF LOCATION OF GOVERNMENT CORNER

Witness corner to the Meander Corner on the west shore of a point of land on Upper Milton Lake, common to Sections 2 and 11, Township 142 North, Range 28 West, of the Fifth Principal Meridian, Cass County, Minnesota.

July, 1997, Northern Lights Surveying & Mapping, Inc. monumented a witness of the meander corner, determined by proportionate measurement, on line, between the southwest corner of Section 2 and the theoretical south quarter corner of Section 2.

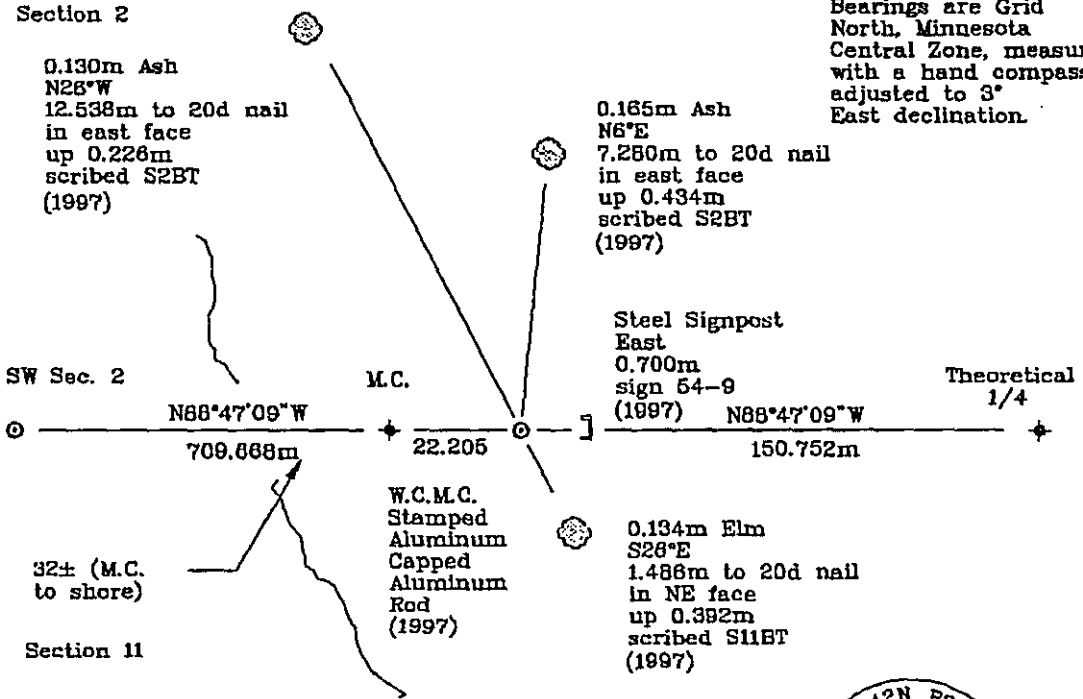
SKETCH OF REFERENCE TIES & EVIDENCE

T.142N., R.26W.

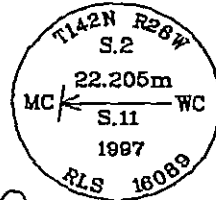


NOT TO SCALE

Bearings are Grid North, Minnesota Central Zone, measured with a hand compass adjusted to 3° East declination.



New bearing trees were blazed, scribed & painted red. A tag stating the bearing & distance was affixed to the tree. A nail was placed in the base of the tree and the distance was measured from the monument to the nail.



400500

Statement of evidence relative to this corner location is on the back of this page

I hereby certify that this survey, plan, or report was prepared by me or under my direct supervision and that I am a duly licensed Land Surveyor under the laws of the State of Minnesota.

Laverne Leuelling 5-20-1998
Laverne Leuelling Date
Registered Land Surveyor No. 16089
NORTHERN LIGHTS SURVEYING & MAPPING

OFFICE OF THE COUNTY RECORDER
County of Cass

I hereby certify that this document was filed in the Recorder's office.
Time: 1:45 P.M. Date: June 1st, 1998
Recorder Claudine Kaylor
By K.F. Deputy
DOCUMENT NO. 400500

Statement of Evidence

Witness corner to the Meander Corner on the west shore of a point of land on Upper Milton Lake, common to Sections 2 and 11, Township 142 North, Range 28 West, of the Fifth Principal Meridian, Cass County, Minnesota.

1871; General Land Office (G.L.O.) survey notes; Deputy Surveyor E.W. Griffing set a wooden post for the meander corner and refernced it with the following:

6" Tamarack (0.152m)	6" Tamarack (0.152m)
N32°E	S87°E
20 Links (4.023m)	35 Links (7.041m)

Said records are on file with the Secretary of State, St. Paul, Minnesota; copies of these records are on file with the Cass County Surveyor's Office, Walker, Minnesota.

1979; United States Department of Agriculture—Forest Service (U.S.D.A.—F.S.) Field Book #3, p.38; U.S.D.A.—F.S. crew of Krause and Hayes conducted a search of the area, but found no evidence. The search area was on line with an extended fence line.

November 26, 1996; Northern Lights Surveying and Mapping, Inc. crew of Smith and Sherek conventionally traversed to a proportioned search position established on line between the southwest corner of Section 2 and the meander corner on the east side of Upper Milton Lake. The position fell approximately 100 feet west of the shore, in Milton Lake. A cursory search was made an no conclusive G.L.O. evidence was found.

Northern Lights Surveying and Mapping, Inc. Slater Township Field Book #2, p.41.

June 8 and 20, 1997; Northern Lights Surveying and Mapping, Inc. surveyor LaVerne Leuelling searched the position established in November, as well as the surrounding area. A power ine runs through the easterly portion of the search area and is clearly disturbed. No stumps and/or snags were found nor any conclusive G.L.O. evidence. The position was then determined to be lost.

Northern Lights Surveying and Mapping, Inc. Slater Township Field Book #2, p.42.

July, 18, 1997; Northern Lights Surveying and Mapping, Inc. crew of Smith, Gerving, and Gerving monumented a witness 22.205m easterly of the meander corner position, determined by proportionate measurement, on line, between the southwest corner of Section 2 and the theoretical south quarter corner of Section 2. The crew set a 3.658m long, 0.019m diameter aluminum rod with a 0.083m diameter aluminum cap, up 0.210m, from which the following references bear:

0.185m Ash	0.134m Elm	0.130m Ash	Steel Signpost
N6°E	S26°E	N26°W	East
7.280m to 20d nail	1.486m to 20d nail	12.538m to 20d nail	0.700m
in east face	in NE face	in east face	sign 54-9
up 0.434m	up 0.392m	up 0.226m	
scribed S2BT	scribed S11BT	scribed S2BT	

Northern Lights Surveying and Mapping, Inc. Slater Township Field Book #3, pp. 46,48. For a description of the methodology, refer to the corner certificate E-18,19, filed by Northern Lights Surveying and Mapping, Inc.

Coordinates:

Itasca County North

Northing = 67,495.145 meters
Easting = 173,677.837 meters

State Plane Coordinate System
Minnesota Central Zone
NAD 83

Northing = 337,492.359 meters
Easting = 823,812.040 meters

Latitude = 47°08'10.31390" North
Longitude = 93°56'10.43387" West