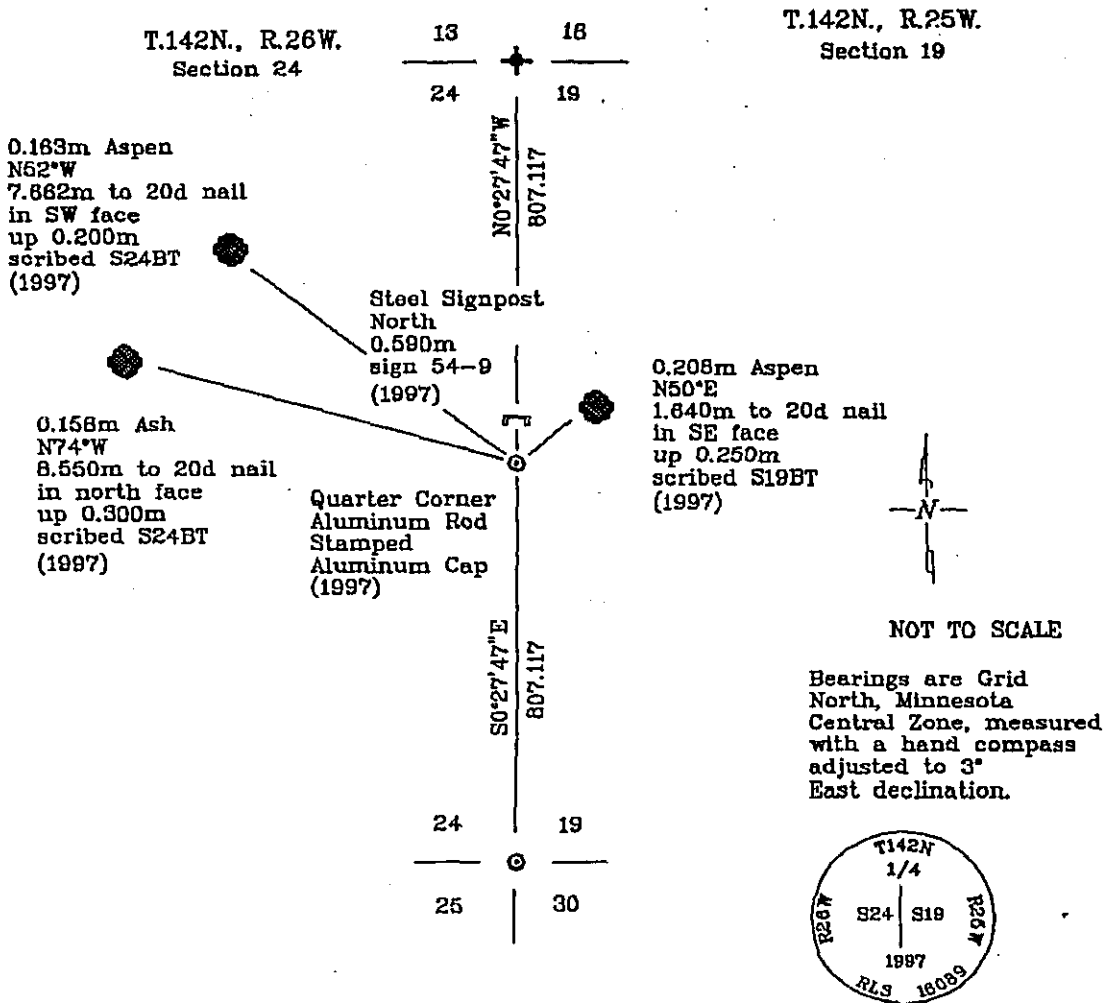


# CERTIFICATE OF LOCATION OF GOVERNMENT CORNER

East Quarter Corner, Section 24, Township 142 North, Range 26 West, of the Fifth Principal Meridian, Cass County, Minnesota.

June, 1997: Northern Lights Surveying and Mapping, Inc. set this corner midway and on line between the theoretical northeast corner of Section 24 and the southeast corner of the same section.

### SKETCH OF REFERENCE TIES & EVIDENCE



395070

Statement of evidence relative to this corner location is on the back of this page

I hereby certify that this survey, plan, or report was prepared by me or under my direct supervision and that I am a duly Licensed Land Surveyor under the laws of the State of Minnesota.

*LaVerne Leuchling* 11-16-97  
 LaVerne Leuchling Date

Registered Land Surveyor No. 16089  
 NORTHERN LIGHTS SURVEYING & MAPPING

OFFICE OF THE COUNTY RECORDER  
 County of Cass

I hereby certify that this document was filed in the Recorder's office.

Time: 3:55 P.M. Date: Dec. 8, 1997

Recorder Claudine Kaylor

By K.F. Deputy

DOCUMENT NO. 395070

## Statement of Evidence

East Quarter Corner, Section 24, Township 142 North, Range 26 West, of the Fifth Principal Meridian, Cass County, Minnesota.

November, 1871: General Land Office (G.L.O.) survey notes; Walker, Allen, and Putman set a wooden post for the quarter corner and referenced it with the following:

8" Oak (0.208m)	6" Oak
S84°W	N51°E
37 Links (7.443m)	28 Links (5.633m)

Said records are on file with the Secretary of State, St. Paul, Minnesota; copies of these records are on file with the Cass County Surveyor's Office, Walker, Minnesota.

November, 1998; Dave Anderson of Northern Lights Surveying and Mapping, Inc. cruised to the quarter corner and established two Global Positioning System (G.P.S.) search positions. He noted that the area had been logged and burned; no G.L.O. evidence was found.

June, 1997; Northern Lights Surveying and Mapping, Inc. crew of Foster and Gerving set a 3.658m long, 0.019m diameter aluminum rod for the quarter corner with a 0.083m diameter stamped aluminum cap, up 0.350m, "lost", and established the following references:

0.208m Aspen	0.158m Ash	0.163m Aspen	Steel Signpost
N50°E	N74°W	N52°W	North
1.640m to 20d nail	8.550m to 20d nail	7.662m to 20d nail	0.590m
in SE face	in north face	in SW face	sign 54-9
up 0.250m	up 0.300m	up 0.200m	
scribed S19BT	scribed S24BT	scribed S24BT	

Northern Lights Surveying and Mapping, Inc. Slater Township Field Book #3, p.4.

## Coordinates:

Cass County North

Northing = 63,487.071 meters  
Easting = 176,223.557 meters

State Plane Coordinate System  
Minnesota Central Zone  
NAD 83

Northing = 333,482.873 meters  
Easting = 826,352.528 meters

Latitude = 47°06'00.24242" North  
Longitude = 93°54'10.31643" West