

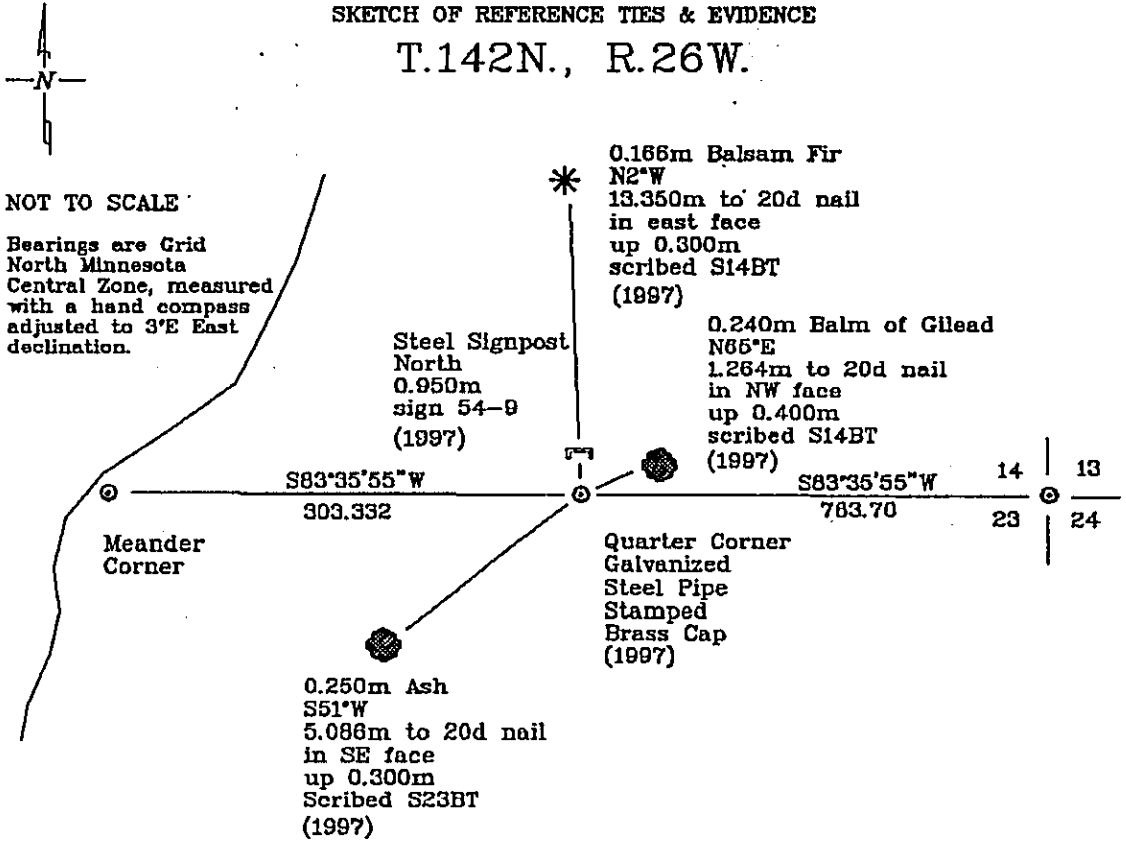
CERTIFICATE OF LOCATION OF GOVERNMENT CORNER

North Quarter Corner, Section 23, Township 142 North, Range 26 West, of the Fifth Principal Meridian, Cass County, Minnesota.

In June, 1997, Northern Lights Surveying and Mapping, Inc. set a galvanized steel brass capped pipe at the single proportioned distance between the Northeast Corner of Section 23 and the existing Meander Corner common to Sections 14 and 23.

SKETCH OF REFERENCE TIES & EVIDENCE

T.142N., R.26W.



NOT TO SCALE
Bearings are Grid North Minnesota Central Zone, measured with a hand compass adjusted to 3'E East declination.



395063

Statement of evidence relative to this corner location is on the back of this page

I hereby certify that this survey, plan, or report was prepared by me or under my direct supervision and that I am a duly Licensed Land Surveyor under the laws of the State of Minnesota.

LaVerne LeDelling 11-16-97
 LaVerne LeDelling Date
 Registered Land Surveyor No. 18089
 NORTHERN LIGHTS SURVEYING & MAPPING

OFFICE OF THE COUNTY RECORDER
 County of Cass

I hereby certify that this document was filed in the Recorder's office.

Time: 3:38 P.M. Date: Dec. 8, 1997
 Recorder Claudine Kaylor
 By K.F. Deputy
 DOCUMENT NO. 395063

Statement of Evidence

North Quarter Corner, Section 23, Township 142 North, Range 26 West, of the Fifth Principal Meridian, Cass County, Minnesota.

1872; General Land Office (G.L.O.) survey notes; Deputy Surveyor E.W. Griffin set a wooden post for the quarter corner and referenced it with the following:

8" Spruce (0.203m)	8" Spruce (0.203m)
N17°W	S35°E
13 Links (2.615m)	16 Links (3.219m)

Said records are on file with the Secretary of State, St. Paul, Minnesota; handwritten copies of these notes are on file with the Cass County Surveyor's Office, Walker, Minnesota.

June, 1963; U.S.D.A.-F.S. Field Book #1, p.35; U.S.D.A.-F.S. crew chained east from Rd. #2114 1320' (402.337m), following a newly brushed line. They found no evidence of the original bearing trees.

November, 1996; Northern Lights Surveying and Mapping, Inc. crew chief Joe Foster cruised N85°E approximately 1000' (304.801m) from the meander corner between Sections 14 and 23, and established two Global Positioning System (G.P.S.) search positions which were used in a G.P.S. session. A preliminary search did not reveal any original evidence. A subsequent search of several potential positions between the northeast corner of section 23 and the meander corner between sections 14 and 23 also revealed no evidence.

June, 1997; Northern Lights Surveying and Mapping, Inc. crew of Foster and Gerving returned to the area and set a 1.219m long, 0.051m diameter galvanized steel pipe with a 0.083m diameter stamped brass cap at the lost quarter corner position, proportioned between the meander corner common to Sections 14 and 23, and the section corner common to Sections 13, 14, 23, and 24. They established the following references:

0.240m Balm of Gilead	0.250m Ash	0.166m Balsam Fir	Steel Signpost
N85°E	S51°W	N2°W	North
1.264m to 20d nail	5.088m to 20d nail	13.350m to 20d nail	0.950m
in NW face	in SE face	in east face	sign 54-9
up 0.400m	up 0.300m	up 0.300m	
scribed S14BT	Scribed S23BT	scribed S14BT	

Northern Lights Surveying and Mapping, Inc. Slater Township Field Book #2, p. 75.

Coordinates

Cass County North

Northing = 64,211.168 meters
Easting = 173,822.879 meters

State Plane Coordinates
Minnesota Central Zone
NAD 83

Northing = 334,205.843 meters
Easting = 823,951.501 meters

Latitude = 47°06'23.98488" North
Longitude = 93°56'04.03950" West