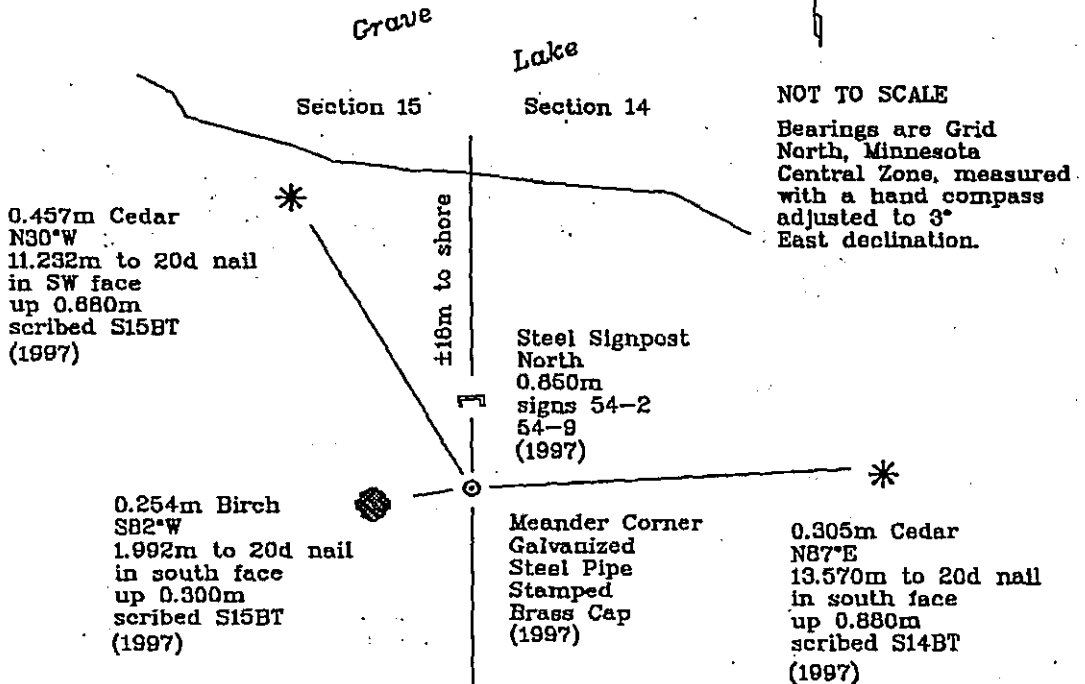
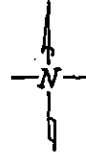


CERTIFICATE OF LOCATION OF GOVERNMENT CORNER

Meander Corner common to Sections 14 and 15, Township 142 North, Range 26 West, of the Fifth Principal Meridian, Cass County, Minnesota.

July, 1997; Northern Lights Surveying and Mapping, Inc. monumented the meander corner position at the prolongation of the south half of the line between Sections 14 and 15 and at record distance from the Quarter Corner common to Sections 14 and 15.

SKETCH OF REFERENCE TIES & EVIDENCE
T.142N., R.26W.



NOT TO SCALE

Bearings are Grid North, Minnesota Central Zone, measured with a hand compass adjusted to 3° East declination.

New bearing trees were blazed, scribed & painted red. A tag stating the bearing & distance was affixed to the tree. A nail was placed in the base of the tree and the distance was measured from the monument to the nail.



395054

Statement of evidence relative to this corner location is on the back of this page

I hereby certify that this survey, plan, or report was prepared by me or under my direct supervision and that I am a duly Licensed Land Surveyor under the laws of the State of Minnesota.

OFFICE OF THE COUNTY RECORDER
County of Cass

I hereby certify that this document was filed in the Recorder's office.

Time: 3:15 P M. Date: Dec. 8, 1997

Recorder Claudine Kaylor

By K.J. Deputy

DOCUMENT NO. 395054

LaVerne Leuelling 11-16-97
Date

Registered Land Surveyor No. 16089
NORTHERN LIGHTS SURVEYING & MAPPING

Statement of Evidence

Meander Corner common to Sections 14 and 15, Township 142 North, Range 26 West, of the Fifth Principal Meridian, Cass County, Minnesota.

1872; General Land Office (G.L.O.) survey notes; Deputy Surveyor E.W. Griffin set a wooden post for the meander corner and referenced it with the following:

8" Cedar (0.203m)	14" Birch
S67°W	S31°W
18 Links (3.621m)	24 Links (4.828m)

Said records are on file with the Secretary of State, St. Paul, Minnesota; copies of these records are on file with the Cass County Surveyor's Office, Walker, Minnesota.

1983; United States Department of Agriculture-Forest Service (U.S.D.A.-F.S.) T.142N., R.26W. Field Book #3, p.3; survey technicians Ekstrom and McDonald made a search, but found no evidence of the meander corner.

October 21, 1993; U.S.D.A.-F.S. T.142N., R.26W. Field Book #3, p.3; survey crew of Krause and Hayes chained to a search position from the section corner common to Sections 14, 15, 22, and 23; no evidence was found.

November, 1990; Northern Lights Surveying and Mapping, Inc. crew of Leuelling and Sherek traversed to and searched a calculated meander corner position, which was on line between the section corner common to Sections 14, 15, 22, 23, and the MC common to Sections 10 and 11, at record G.L.O. distance, but no evidence was found.

July 16, 1997; Northern Lights Surveying and Mapping, Inc. crew of Smith and Gerving traversed to, searched, and monumented the meander corner position, which is at the prolongation of the south half of the line between Sections 14 and 15, and at G.L.O. record distance from the quarter corner common to Sections 14 and 15, with a 1.219m long, 0.051m diameter galvanized steel pipe with a 0.083m diameter stamped brass cap; the crew established the following references:

0.254m Birch	0.305m Cedar	0.457m Cedar	Steel Signpost
S82°W	N87°E	N30°W	North
1.992m to 20d nail	13.570m to 20d nail	11.232m to 20d nail	0.850m
in south face	in south face	in SW face	signs 54-2
up 0.300m	up 0.880m	up 0.680m	54-9
scribed S15BT	scribed S14BT	scribed S15BT	

Northern Lights Surveying and Mapping, Inc. Slater Township Field Book #1, p. 33.

Coordinates:

Itasca County North

Northing = 65,334.79 meters
Easting = 173,023.70 meters

State Plane Coordinate System
Minnesota Central Zone
NAD 83

Northing = 335,339.11 meters
Easting = 823,152.13 meters

Latitude = 47°07'00.78299" North
Longitude = 93°56'41.74425" West