

# CERTIFICATE OF LOCATION OF GOVERNMENT CORNER

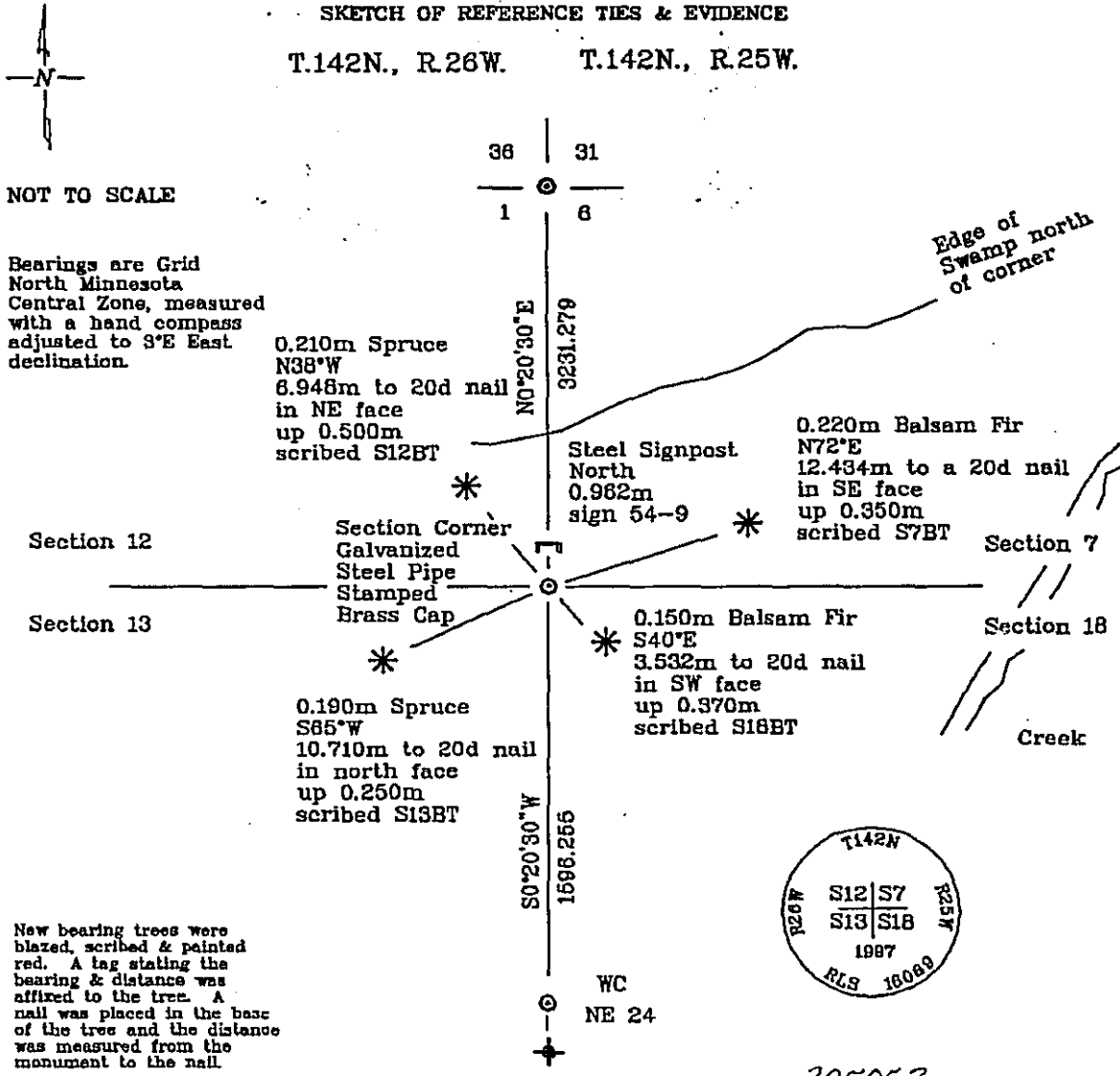
Northeast Corner, Section 13, Township 142 North, Range 26 West, of the Fifth Principal Meridian, Cass County, Minnesota.

June, 1897, Northern Lights Surveying and Mapping, Inc. rejected a found square post for this corner and set a galvanized steel pipe at the "lost" position. This position matched General Land Office (G.L.O.) record features while the post position, and its lack of history, did not.

## SKETCH OF REFERENCE TIES & EVIDENCE

T.142N., R.26W.

T.142N., R.25W.



Statement of evidence relative to this corner location is on the back of this page

I hereby certify that this survey, plan, or report was prepared by me or under my direct supervision and that I am a duly Licensed Land Surveyor under the laws of the State of Minnesota.

*LaVerne Leuellling* 11-16-97  
LaVerne Leuellling Date

Registered Land Surveyor No. 16089  
NORTHERN LIGHTS SURVEYING & MAPPING

OFFICE OF THE COUNTY RECORDER  
County of Cass

I hereby certify that this document was filed in the Recorder's office.

Time: 3:12 P. M. Date: Dec. 8, 1997

Recorder Claudine Kayser

By K.F. Deputy

DOCUMENT NO. 395053

## Statement of Evidence

Northeast Corner, Section 13, Township 142 North, Range 26 West, of the Fifth Principal Meridian, Cass County, Minnesota.

1871; General Land Office (G.L.O.) survey notes; Walker, Allen and Putman set a wooden post for the section corner and referenced it with the following:

8" Cedar (0.152m) S20°E	8" Cedar (0.152m) S42°W	8" Cedar (0.152m) N51°W	4" Cedar (0.102m) N80°W
8 Links (1.207m)	17 Links (3.420m)	21 Links (4.225m)	12 Links (2.414m)

Feature calls noted: left swamp 7 chains (140.818m) north of set post  
crossed brook 7.3 chains (146.853m) east of set post

Said records are on file with the Secretary of State, St. Paul, Minnesota; handwritten copies of these notes are on file with the Cass County Surveyor's Office, Walker, Minnesota.

1983; U.S.D.A.-F.S. Field Book #2, p.25; U.S.D.A.-F.S. survey crew searched the area of the section corner but found no evidence.

October, 1996; Northern Lights Surveying and Mapping, Inc. crew chief Mike Smith cruised to the approximate location of the section corner and established two Global Positioning System (G.P.S.) search positions. He noted that an approximate corner tag was found S35°E approximately 30' (9.144m) from the search area. A crew later returned to the corner location and found several possible G.L.O. Bearing Trees. A squared post was found.

November, 1996; Northern Lights Surveying and Mapping, Inc. chained to the corner to check original G.L.O. feature calls against a possible "lost" corner location. The following was found:

edge of swamp to north of "lost" location 450 feet (137.160m)  
brook east of "lost" location 710 feet (216.408m)

wood post measured 205 feet from edge of swamp to north (62.484m)  
wood post measured 650 feet from brook to east (198.120m)

From the above measurements, the decision was made to set the corner "lost", to more accurately fit the original G.L.O. feature calls.

May, 1997; Northern Lights Surveying and Mapping, Inc. crew of Foster and Sherek monumented the lost section corner position with a 1.219m long, 0.051m diameter galvanized steel pipe with a stamped brass cap up 0.240m from which the following references were established:

0.220m Balsam Fir N72°E	0.150m Balsam Fir S40°E	0.190m Spruce S65°DDW	0.210m Spruce N38°W
12.434m to a 20d nail in SE face up 0.350m scribed S7BT	3.532m to 20d nail in SW face up 0.370m scribed S18BT	10.710m to 20d nail in north face up 0.250m scribed S13BT	6.948m to 20d nail in NE face up 0.500m scribed S12BT

Steel Signpost  
North  
0.962m  
sign 54-9

Northern Lights Surveying and Mapping, Inc. Slater Township Field Book #2, p.30.

## Coordinates

Cass County North

Northing = 65,909.855 meters  
Easting = 176,227.281 meters

State Plane Coordinate System  
Minnesota Central Zone  
NAD 83

Northing = 335,905.344 meters  
Easting = 826,355.369 meters

Latitude = 47°07'18.69102" North  
Longitude = 93°54'09.67794" West