

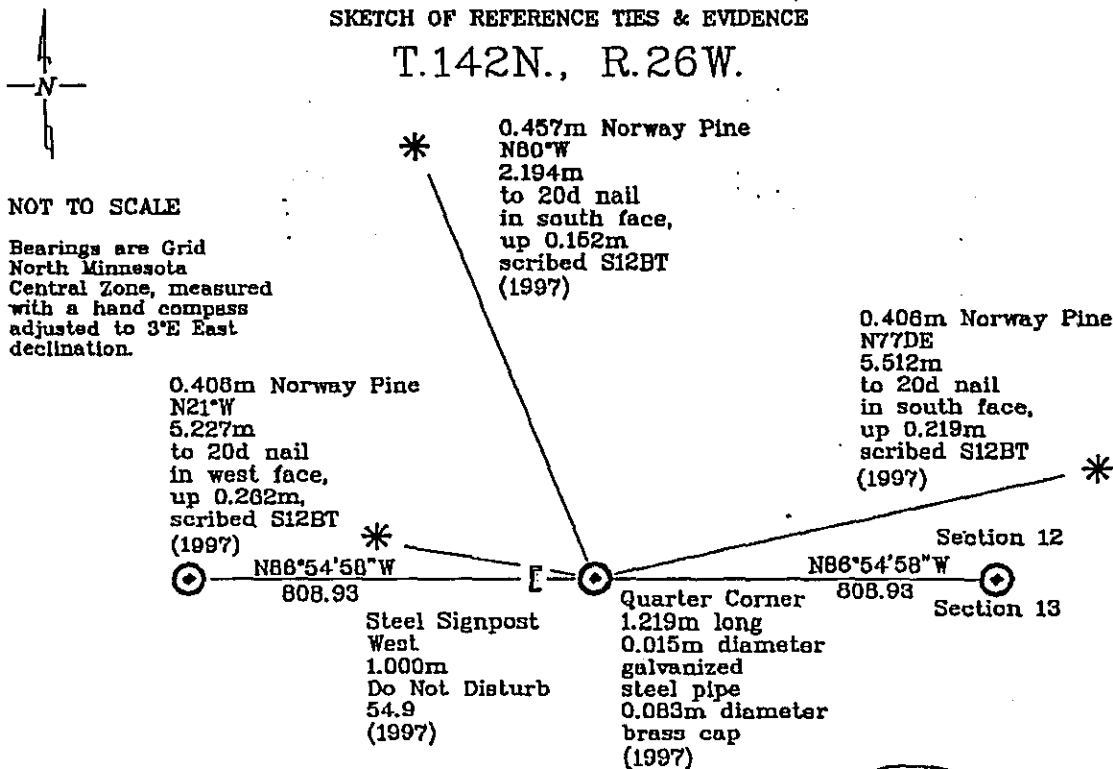
CERTIFICATE OF LOCATION OF GOVERNMENT CORNER

North Quarter Corner, Section 13, Township 142 North, Range 26 West, of the 5th Principal Meridian, Cass County, Minnesota.

June, 1997; Northern Lights Surveying and Mapping, Inc. set a brass capped galvanized steel pipe at the "lost" position between the Northeast and Northwest corners of Section 13.

SKETCH OF REFERENCE TIES & EVIDENCE

T.142N., R.26W.



NOT TO SCALE

Bearings are Grid North Minnesota Central Zone, measured with a hand compass adjusted to 3°E East declination.

0.408m Norway Pine
N21°W
5.227m
to 20d nail
in west face,
up 0.262m,
scribed S12BT
(1997)

0.457m Norway Pine
N80°W
2.194m
to 20d nail
in south face,
up 0.152m
scribed S12BT
(1997)

0.408m Norway Pine
N77°DE
5.512m
to 20d nail
in south face,
up 0.219m
scribed S12BT
(1997)

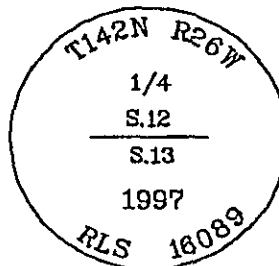
N88°54'58"W
808.93

N88°54'58"W
808.93

Steel Signpost
West
1.000m
Do Not Disturb
54.9
(1997)

Quarter Corner
1.219m long
0.015m diameter
galvanized
steel pipe
0.083m diameter
brass cap
(1997)

New bearing trees were blazed, scribed & painted red. A tag stating the bearing & distance was affixed to the tree. A nail was placed in the base of the tree and the distance was measured from the monument to the nail.



395053

Statement of evidence relative to this corner location is on the back of this page

I hereby certify that this survey, plan, or report was prepared by me or under my direct supervision and that I am a duly Licensed Land Surveyor under the laws of the State of Minnesota.

LaVerne Leuelling 11-16-97
Date

Registered Land Surveyor No. 18089
NORTHERN LIGHTS SURVEYING & MAPPING

OFFICE OF THE COUNTY RECORDER
County of Cass

I hereby certify that this document was filed in the Recorder's office.

Time: 3:10 P .M. Date: Dec. 8, 1997

Recorder Claudine Kayor

By K.J. Deputy

DOCUMENT NO. 395053

Statement of Evidence

North Quarter Corner, Section 13, Township 142 North, Range 26 West, of the 5th Principal Meridian, Cass County, Minnesota.

1872; General Land Office (G.L.O.) survey notes; Deputy Surveyor E.W. Griffin set a wooden post for the quarter corner and referenced it with the following:

12" Norway Pine (0.305m)	12" White Pine (0.305m)
N8°W	S30°E
10 Links (2.012m)	29 Links (5.834m)

Said records are on file with the Secretary of State, St. Paul, Minnesota; handwritten copies of these notes are on file with the United States Department of Agriculture-Forest Service (U.S.D.A.-F.S.) Chippewa National Forest Supervisor's Office, Cass Lake, Minnesota.

October, 1996; Northern Lights Surveying and Mapping, Inc. crew member Pete Berg cruised to the corner location and established two Global Positioning System (G.P.S.) search positions. A search was conducted at this time, which revealed several large pine stumps, but no scribing was discovered. A U.S.D.A.-F.S. road lays in the middle of the search area and several stumps were pushed into piles.

June, 1997; Northern Lights Surveying and Mapping, Inc. crew of Berg and Gerving set a 1.219m long, 0.015m diameter galvanized steel pipe with a 0.083m diameter stamped brass cap flush, at the "lost" quarter corner position from which the following references were established:

0.408m Norway Pine	0.457m Norway Pine	0.408m Norway Pine	Steel Signpost
N21°W	N80°W	N77DE	West
5.227m	2.194m	5.512m	1.000m
to 20d nail	to 20d nail	to 20d nail	Do Not Disturb
in west face,	in south face,	in south face,	54.9
up 0.262m,	up 0.152m	up 0.219m	
scribed S12BT	scribed S12BT	scribed S12BT	

Coordinates

Cass County North

Northing = 85,953.878 meters
Easting = 175,419.514 meters

State Plane Coordinate System
Minnesota Central Zone
NAD 83

Northing = 335,948.88 meters
Easting = 825,547.81 meters

Latitude = 47°07'20.21316" North
Longitude = 93°54'47.98946" West