

# CERTIFICATE OF LOCATION OF GOVERNMENT CORNER

NORTHEAST Corner of Section 30, Township 134 N, Range 30 W, 5th P.M.

STATE OF MINNESOTA, County of CASS

At the corner location shown on the sketch:

■ On 4/4/94 found a SPIKE 0.6' NORTH OF CENTER LINE OF EAST-WEST C.S.A.H. 34 (DOWN 0.8')  
DATE

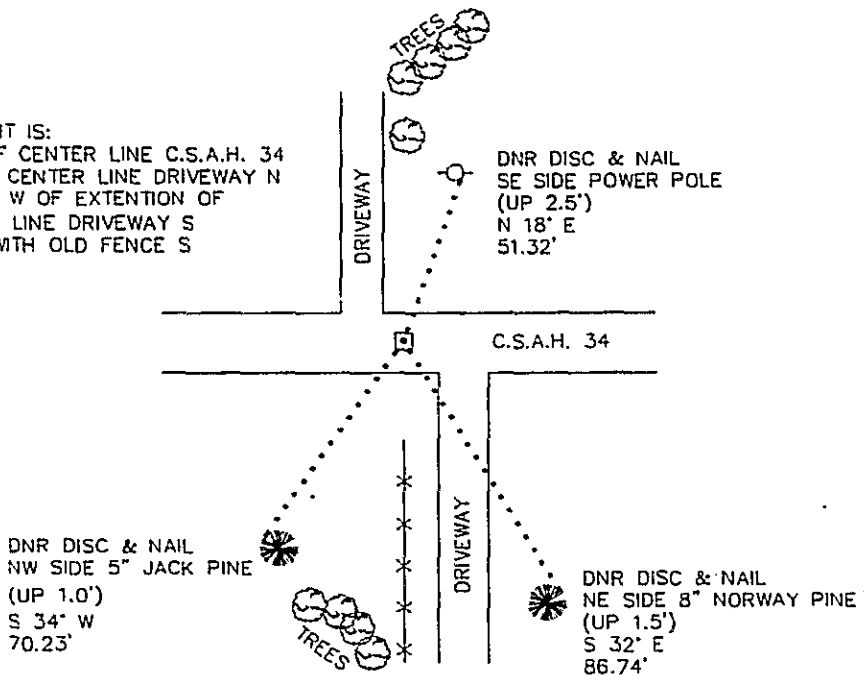
left monument as found,       lowered monument,      ■ removed monument (explain)

■ On 4/4/94 Placed a 3/4" x 24" REBAR WITH ALUMINUM CAP STAMPED: "DNR SURVEY MARKER"  
DATE  
IN PLACE OF SPIKE.

### SKETCH OF REFERENCE TIES



NOTE:  
MONUMENT IS:  
0.6' N OF CENTER LINE C.S.A.H. 34  
12' E OF CENTER LINE DRIVEWAY N  
+/- 16' W OF EXTENSION OF  
CENTER LINE DRIVEWAY S  
IN LINE WITH OLD FENCE S



NOT TO SCALE  
BEARINGS OBSERVED WITH A COMPASS

Statement of evidence relative to this corner location is on back of page.

DATE 9/27/94  
FILE SFT 00039

I hereby certify that this document and the data contained herein was prepared by me or under my direct supervision.

John D. Walker      10-17-94  
SIGNATURE      DATE

Registration No. 16098

- Land Surveyor,       Professional Engineer  
 County Surveyor,       County Engineer

OFFICE OF THE COUNTY RECORDER

County of CASS

I hereby certify that this document was filed in the Co. recorders office at 10:30 A.M. on the 22nd day of February A.D., 1996

County Recorder Claudine Kayler  
By N, Deputy

DOCUMENT NO. 375017

R-5

Northeast Corner Section 30, Township 134 North, Range 30 West, 5th P.M.

The Department of Natural Resources, Bureau of Engineering (BOE) made the following contacts for corner information:

Minnesota Secretary of State  
Cass County Surveyors Office  
Landecker & Associates, Walker & Pequot Lakes  
Widseth, Smith & Nolting, Brainerd  
Area Landowners

1868 This corner was originally established by the U.S. General Land Office Survey. The government notes show the corner marked with a post and witnessed by the following bearing trees:

Bl. Pine 14", S 44° W, 42 links (27.72')  
Bl. Pine 12", N 87° W, 29 links (19.14')  
Bl. Pine 7", N 78° E, 56 links (36.96')  
Bl. Pine 15", S 27° E, 54 links (35.64')

1987 David Landecker in a survey of Section 21 located a metal attraction at this corner.

1994 BOE found a PK nail at the surface of the county road. There was a metal attraction under the PK nail. Two very old nails were found down 0.6' and 0.8'. The nails were removed and a 2 1/2" iron pipe was found down 2' laying down. The pipe couldn't be removed without digging up a lot of the asphalt road. The spikes were accepted as marking the corner location and a DNR survey marker was set to perpetuate the section corner.

For information regarding this survey, contact the Minnesota Department of Natural Resources, Bureau of Engineering, Survey Section, 500 Lafayette Road, St. Paul, MN 55155-4029.