

CERTIFICATE OF LOCATION OF GOVERNMENT CORNER

East Quarter _____ Corner of Section 3, Township 141N, Range 26W, 5th P.M.

STATE OF MINNESOTA, County of Cass

At the corner location shown on the sketch:

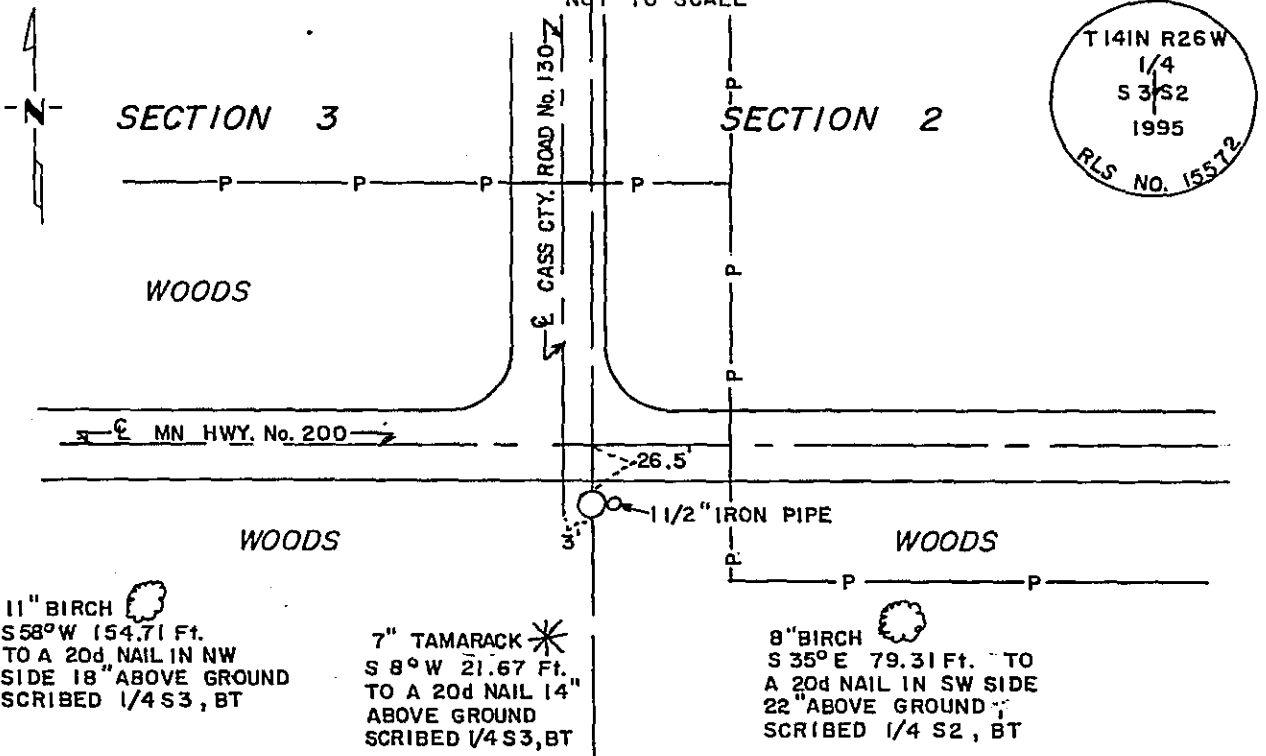
On 10/26/94 found a 1 1/2" x 30" Iron Pipe
DATE

left monument as found, lowered monument, removed monument (explain)

On 2/8/95 placed a 2 1/2" x 48" Dia. Galvanized iron monument with a 3" Dia. Brass Cap stamped to identify the corner-4" below ground. The 1 1/2" iron pipe was reset to the east of the corner flush with the ground.
DATE

MAGNETIC: 2° E. DECL.

SKETCH OF REFERENCE TIES
NOT TO SCALE



11" BIRCH
S 58° W 154.71 Ft.
TO A 20d NAIL IN NW
SIDE 18" ABOVE GROUND
SCRIBED 1/4 S3, BT

7" TAMARACK *
S 8° W 21.67 Ft.
TO A 20d NAIL 14"
ABOVE GROUND
SCRIBED 1/4 S3, BT

8" BIRCH
S 35° E 79.31 Ft. TO
A 20d NAIL IN SW SIDE
22" ABOVE GROUND
SCRIBED 1/4 S2, BT

ALL BEARINGS ARE TRUE
ALL DISTANCES HORIZ. AND TEMP. CORRECTED
ALL TREES MARKED WITH RED ENAMEL PAINT AND 54-3 (BEARING TREE) TAGS.

Statement of evidence relative to this corner location is on back of page.

365507

I hereby certify that this survey, plan or report was prepared by me or under my direct supervision and that I am a duly Registered Land Surveyor under the laws of the State of Minnesota.

Lowell J. Schellack

Date 3/21/95 Registration No. 15572

OFFICE OF THE COUNTY RECORDER
County of CASS

I hereby certify that this document was filed in the Co. Recorders office at 3:00 P.M. on the 21st day of MARCH A.D., 1995

County Recorder Claudine Kaylar

By no, Deputy

DOCUMENT NO. 365507

Statement of Evidence: EAST QUARTER CORNER OF SECTION 3, TOWNSHIP 141 NORTH, RANGE 26 WEST OF THE 5th PRINCIPAL MERIDIAN.

The original public land survey was run in 1871 by Walker, Allen and Putnam. A post was set to mark the corner and two bearing trees were marked and recorded as accessories: A 14" spruce that bears N42°W-12 links(7.92 ft.); and a 12" spruce that bears S66°E-13 links(8.58 ft.). The notes of this survey are on file at the office of the Secretary of State, St. Paul, MN.

In 1922, J.H. Flynn, Cass County Surveyor was at the corner performing a survey of the Pound and Wax Co. Road on the east and north lines of Section 3, T141N, R26W. He reports that in 1912 at the time of the survey of the "Remer Longville" Road he put down an iron pipe, 1½x30" for a found post. He reports that he found the original bearing trees in 1912. He then proceeded to make two new bearing trees; A 13" tamarack stump that bears N8°W-29 ft.; and a 10" tamarack stump that bears S16°E-40 ft. In 1922 he found the iron pipe and the 1912 bearing trees intact, the south one slightly burned. Survey Book D, pages 51-53, Cass County Courthouse.

The MnDOT Survey Office at Baxter, MN was contacted for any history of the corner they might have. Jim Neilsen, RLS, searched the records and found a drawing from a 1931 Highway 200 road survey. However, he said no notes were available. The road survey shows the corner to be within the road ROW south of the centerline of Highway 200 and on the projected centerline of Cass County Road 130 to the north. Roll #B14, MnDOT Survey Office, Baxter, MN.

On October 26, 1994, Tom Miller, RLS and Jon Larson of Schellack Engineering and Land Surveying were at the corner. They found a 1½" Dia. iron pipe on the south shoulder of Highway 200 and about 3' east of the projected centerline of Cass County Road #130 to the north. No accessories were found. Flynn's distance to the north-east corner of Section 3 was 2638 feet. We measured 2636.25 feet which compares favorably to Flynn's distance. The corner is also on line with the northeast and southeast corners of Section 3.

After analysis of the above information, it was decided that the position of the 1½" dia. pipe represents the best location for the east quarter corner of Section 3. USFS Contract, 1994-95.

For additional information, contact the Cass County Surveyor's Office in Walker, MN.