

# CERTIFICATE OF LOCATION OF GOVERNMENT CORNER

Northeast Corner of Section 27, Township 142N, Range 26W, 5th P.M.

STATE OF MINNESOTA, County of Cass

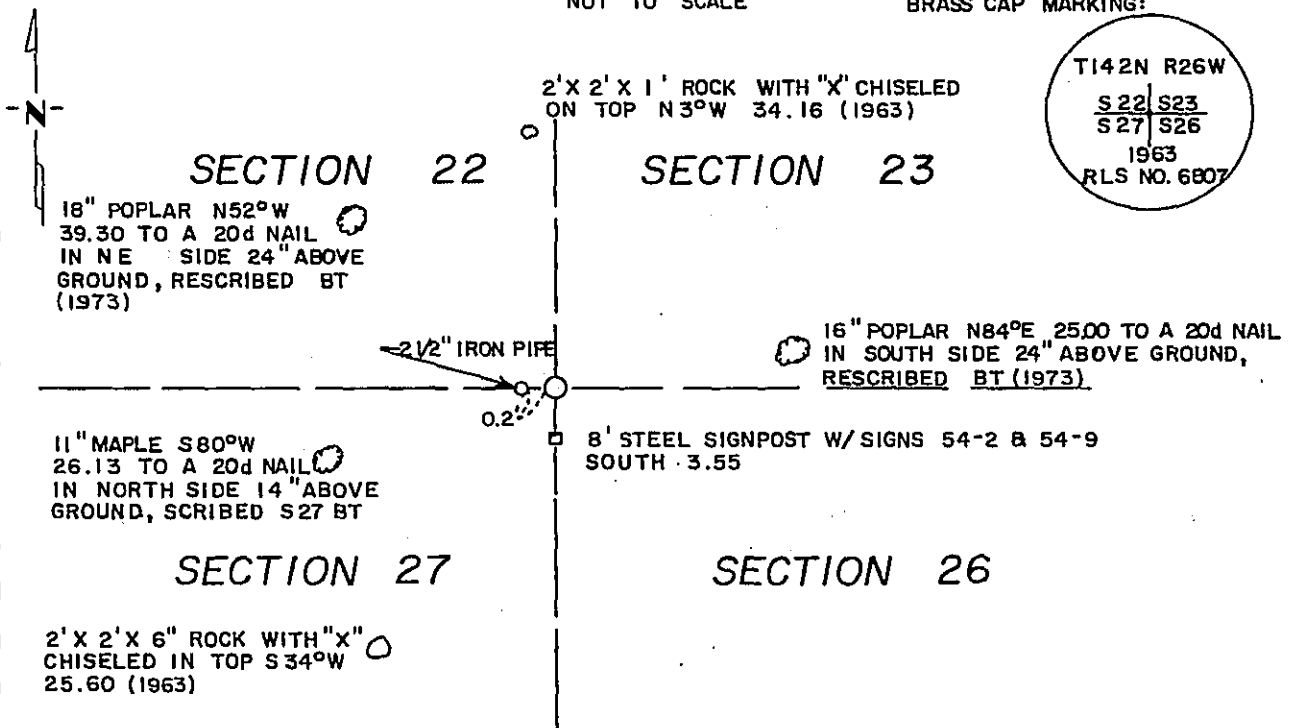
At the corner location shown on the sketch:

- On 2/1/95 found a 2"x60" Galvanized Steel Monument with a 3" stamped  
DATE  
bronze tablet to identify the corner - 20" above ground
- left monument as found,  lowered monument,  removed monument (explain)
- On \_\_\_\_\_ placed a \_\_\_\_\_  
DATE

MAGNETIC : 2° E. DECL.

SKETCH OF REFERENCE TIES  
NOT TO SCALE

BRASS CAP MARKING:



ALL BEARINGS ARE TRUE

ALL DISTANCES ARE HORIZ. AND TEMP. CORRECTED

ALL TREES MARKED WITH RED ENAMEL PAINT AND WITH A 54-3 (BEARING TREE) TAG.

Statement of evidence relative to this corner location is on back of page.

365503

I hereby certify that this survey, plan or report was prepared by me or under my direct supervision and that I am a duly Registered Land Surveyor under the laws of the State of Minnesota.

Lowell J. Schellack

Date 3/21/95 Registration No. 15572

OFFICE OF THE COUNTY RECORDER

County of CASS

I hereby certify that this document was filed in the Co. Recorders office at 2:35 P.M. on the 21st day of MARCH A.D., 1995

County Recorder Claudine Kaylar

By N.C., Deputy

DOCUMENT NO. 365503

**Statement of Evidence:** NORTHEAST CORNER OF SECTION 27, TOWNSHIP 142 NORTH, RANGE 26 WEST OF THE 5th PRINCIPAL MERIDIAN.

The original public land survey was run in 1872 by Griffin. A post was set to mark the corner and 4 bearing trees were marked and recorded as accessories; A 40" W. Pine that bears S62°E-18 links(11.88 feet); a 5" spruce that bears N63°E-6 links (3.96 feet); a 6" Y. Birch that bears N73°W-27 links(17.82 feet); and a 36" W. Pine that bears S60°W-55 links(36.30 feet). The notes for this survey are on file at the office of the Secretary of State, St. Paul, MN.

In 1921 James Flynn, Cass County Surveyor, was at the corner. He found two old Government B.T.'s; A 36' W. Pine stump that bears S60°W-36.25 feet; and a 40" W. Pine stump that bears S62°E-12.00 feet. He proceeded to set a 2½" x 40" iron monument. County re-survey of 1921. County Survey Book C. page 415, Cass County Courthouse, Walker, MN.

In 1963 William Okerman, RLS, was at the corner. He found the 2½" x 40" iron monument. He set in its place a 2"x60" galvanized steel monument filled with concrete and capped with a 3" stamped bronze tablet to identify the corner. Okerman also found the remains of the two stumps that Flynn had found in 1921. Okerman then recorded two rocks, each with a chiseled X on top, as accessories; A 2'x2'x6" rock that bears S34°W-25.8 feet; and a 2'x2½'x1' rock that bears N03°W-34.2 feet. Affidavit as to location of Government Corner filed as #327 on 10/20/64, Cass County Recorder's Office, Walker, MN.

On September 9, 1973, Curt Krause, USFS Survey Technician, was at the corner. He chained south from ½ brass cap-2740 feet. He found a 2" iron in place and in good condition, 18" above ground and a 2" county pipe with cap along side. Sign post was in good condition and found both rocks as witnesses to the corner. He marked and recorded 4 bearing trees as accessories with B.T. tags and the trees were blazed, not scribed; A 7" aspen that bears S12°E-28.5 feet; a 10" aspen that bears N84°E-25.0 feet; an 11" aspen that bears N52°W-39.3 feet; and a 4" twin elm that bears N15°W-43.3 feet. He also found an FSLP on a 12" aspen S3°W-13.5 feet-bad top, Date 4/17/63, RHM-JHE. USFS Land Corner Record Card, Chippewa National Forest, Cass Lake, MN.

On February 2, 1995 Tom Miller, RLS and Jon Larson of Schellack Engineering and Land Surveying, USFS Contract, 1994-95, were at the corner. They found the 2"x60" galvanized steel monument with a 3" stamped bronze tablet that was set by Okerman in 1963. They also found the two rocks recorded by Okerman and two of the bearing trees marked and recorded by Krause in 1973.

For additional information, contact the Cass County Surveyor's Office in Walker, MN.