

# CERTIFICATE OF LOCATION OF GOVERNMENT CORNER

North Quarter \_\_\_\_\_ Corner of Section 18, Township 144, Range 27, 5th P.M.  
 STATE OF MINNESOTA, County of Cass

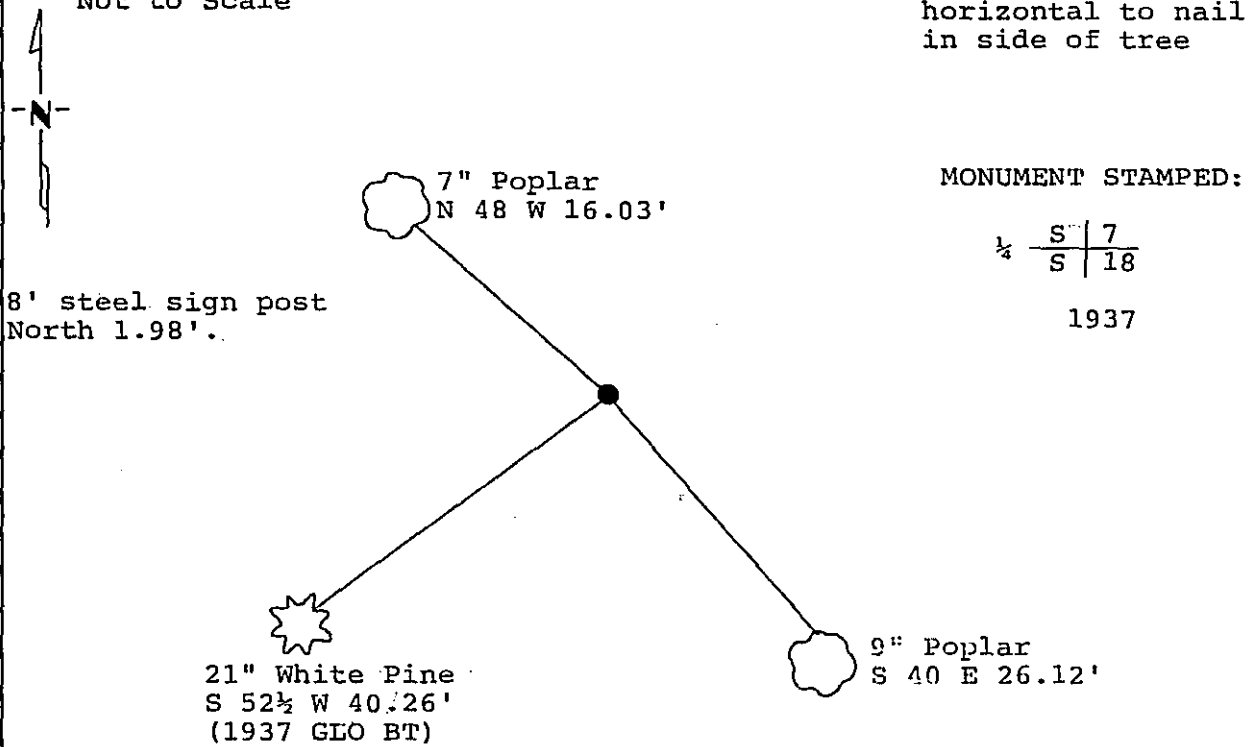
At the corner location shown on the sketch:

- On 10/31/94 found a 1 inch iron pipe with brass cap up 4 inches  
DATE
- left monument as found,  lowered monument,  removed monument (explain)
- On \_\_\_\_\_ placed a \_\_\_\_\_  
DATE

Magnetic Decl: 5° East  
 Not to Scale

### SKETCH OF REFERENCE TIES

All distances are horizontal to nail in side of tree



All bearing trees are scribed, painted with red enamel and marked with a 54-3 (bearing tree) tag.

Statement of evidence relative to this corner location is on back of page.

I hereby certify that this document and the data contained herein was prepared by me or under my direct supervision.

*[Signature]* 3/16/95  
SIGNATURE DATE

Registration No. 21367

- Land Surveyor
- County Surveyor

365390  
 OFFICE OF THE COUNTY RECORDER  
 County of CASS

I hereby certify that this document was filed in the Co. Recorders office at 10:50 A.M. on the 16<sup>th</sup> day of MARCH A.D., 1995

County Recorder Claudine Kaylar  
 By N.O., Deputy

DOCUMENT NO. 365390

Statement of Evidence:

North Quarter corner, Section 18, Township 144  
North, Range 27 West, Cass County, Minnesota

J - 3

1873 P.H. Conger, U.S. Deputy Surveyor, originally established this corner position while subdividing Township 144 North, Range 27 West. The notes indicate that he set a wood post and marked the following bearing tree: a 3 inch Tamarack South 34 degrees West a distance of 83 lks (54.78 feet).

1937 Hal Craig, General Land Office dependent resurvey, filed at the Secretary of State Office, notes indicate he set a 1 inch by 36 inch iron pipe with brass cap at the single proportionate position and marked the following bearing trees: an 8 inch White Pine South 52 and 1/2 degrees West a distance of 61 lks (40.26 feet); and a 15 inch Norway Pine North 9 and 3/4 degrees West a distance of 254 lks (167.64 feet).

1994 on October 31, a Landecker & Associates, Inc. survey crew found a 1 inch iron pipe with brass cap up 4 inches and the 1937 White Pine Southwest now 21 inches in diameter. They marked new bearing trees as noted on front of this certificate. Landecker & Associates, Inc. accepts the found monument as a perpetuation of the corner established in 1937 by the General Land Office.