

# CERTIFICATE OF LOCATION OF GOVERNMENT CORNER

Witness to  
Meander corner #13 Corner of Section 7, Township 144, Range 27, 5th P.M.

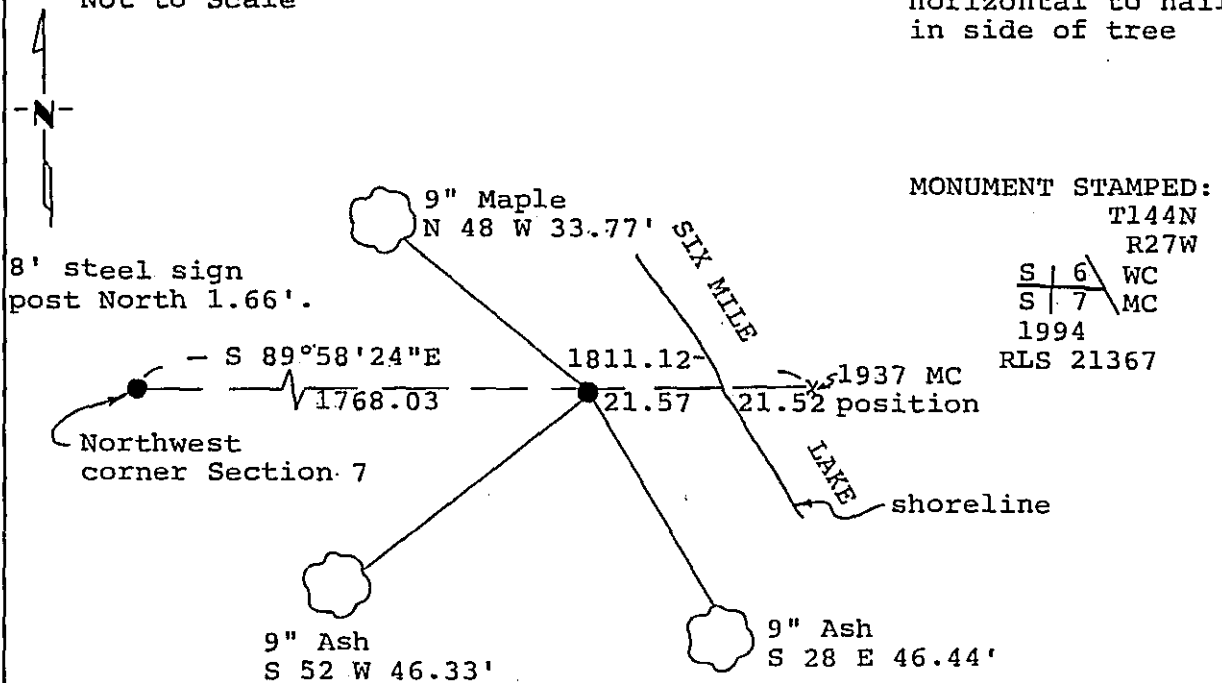
STATE OF MINNESOTA, County of Cass

At the corner location shown on the sketch:

- On 10/31/94 found a 14 inch Ash stub (1937 bearing tree)  
DATE
- left monument as found,  lowered monument,  removed monument (explain)
- On 12/27/94 placed a 2 inch iron pipe with brass cap up 10 inches  
DATE as a witness to the position re-established in 1937

Magnetic Decl: 5° East SKETCH OF REFERENCE TIES  
 Not to Scale

All distances are horizontal to nail in side of tree



All bearing trees are scribed, painted with red enamel and marked with a 54-3 (bearing tree) tag.

Statement of evidence relative to this corner location is on back of page.

I hereby certify that this document and the data contained herein was prepared by me or under my direct supervision.

Larry J. Joern 3/16/95  
SIGNATURE DATE

Registration No. 21367

- Land Surveyor
- County Surveyor

365388  
 OFFICE OF THE COUNTY RECORDER  
 County of CASS

I hereby certify that this document was filed in the Co. Recorders office at 10:30 A.M. on the 16th day of MARCH A.D., 1995

County Recorder Claudia Kaylar  
 By N.O., Deputy

DOCUMENT NO. 365388

Statement of Evidence:

Meander corner number 13, Section 7,  
Township 144 North, Range 27 West, Cass  
County, Minnesota

E 2-3

1873 P.H. Conger, U.S. Deputy Surveyor, originally established this corner position while subdividing Township 144 North, Range 27 West. The notes indicate that he set a wood post and marked the following bearing trees: a 6 inch Spruce North 76 and 1/2 degrees West a distance of 25 lks (16.50 feet); and an 8 inch Spruce South 56 and 1/2 degrees West a distance of 27 lks (17.82 feet).

1937 Hal Craig, General Land Office dependent resurvey, filed at the Secretary of State Office, notes indicate he set a 1 inch by 36 inch iron pipe with brass cap on record bearing of East from Northwest corner of Section 7 and marked the following bearing trees: an 8 inch Ash South 11 and 3/4 degrees West a distance of 7 lks (4.62 feet); and a 12 inch Ash North 85 and 1/4 degrees West a distance of 49 lks (32.34 feet).

1994 on October 31, a Landecker & Associates, Inc., survey crew determined the corner position to fall in Six Mile Lake. They found the 13 inch Northwest bearing tree from 1937. The other 1937 Ash bearing tree position falls in lake also. On December 27, they set a 2 inch iron pipe as witness corner to the meander corner as re-established by the General Land Office in 1937 from the found Northwest bearing tree. They marked new bearing trees as shown and set a steel sign post as noted on front of this certificate. Landecker & Associates, Inc. accepts the monumented position as a perpetuation of the north line of Section 7 as re-established in 1937 by the General Land Office.