

CERTIFICATE OF LOCATION OF GOVERNMENT CORNER

East Quarter _____ Corner of Section 12, Township 144, Range 28, 5th P.M.

STATE OF MINNESOTA, County of Cass

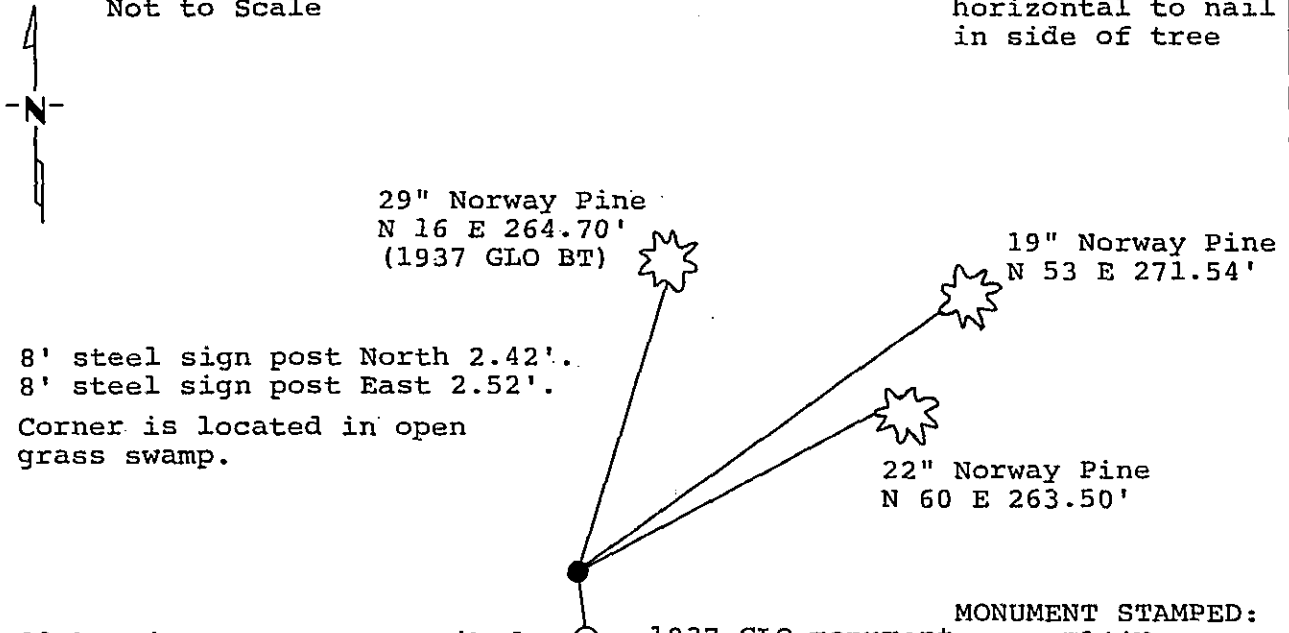
At the corner location shown on the sketch:

- On 11/9/95 found a 1 inch by 36 inch General Land Office Brass cap monument. ^{DATE} Lowered monument and tie to proportional position.
 - left monument as found, lowered monument, removed monument (explain)
- On 12/28/94 placed a 2 inch iron pipe with brass cap over an 8 ^{DATE} foot steel sign post

Magnetic Decl: 5° East
Not to Scale

SKETCH OF REFERENCE TIES

All distances are horizontal to nail in side of tree



All bearing trees are scribed, painted with red enamel and marked with a 54-3 (bearing tree) tag.

1937 GLO monument
S 6°53'20" E
12.39'

MONUMENT STAMPED:
T144N
R28W R27W
S12+S7
1994
RLS 21367

Statement of evidence relative to this corner location is on back of page.

I hereby certify that this document and the data contained herein was prepared by me or under my direct supervision.

Tony L. Starn 3/16/95
SIGNATURE DATE

Registration No. 21367

- Land Surveyor
- County Surveyor

365386

OFFICE OF THE COUNTY RECORDER
County of CASS

I hereby certify that this document was filed in the Co. Recorders office at 10:10 A.M. on the 16th day of MARCH A.D., 1995

County Recorder Claudia Kaylar
By N.B., Deputy

DOCUMENT NO. 365386

Statement of Evidence:

East Quarter corner, Section 12, Township 144
North, Range 28 West, Cass County, Minnesota

G - 25

1873 P.H. Conger, U.S. Deputy Surveyor, originally established this corner position while running the east line of Township 144 North, Range 28 West. The notes indicate that he set a wood post and marked the following bearing trees: a 3 inch Tamarack North 20 degrees East a distance of 12 lks (7.92 feet); and a 3 inch Tamarack South 7 degrees West a distance of 9 lks (5.94 feet).

1937 Hal Craig, General Land Office dependent resurvey, notes filed at the Secretary of State Office, indicate he set a 1 inch by 36 inch iron pipe with brass cap and marked the following bearing tree: a 10 inch Norway Pine North 14 and 3/4 degrees East a distance of 217 lks (143.22 feet).

No Date: Civilian Conservation Corps notes on Form 874 in United States Forest Service records in Cass Lake, Minnesota, show that a Forest Service Location Poster was placed on an 8 inch Aspen North a distance of 90 chains.

1994 on November 9, a Landecker & Associates, Inc. survey crew locate 1937 General Land Office brass cap and a 29 inch Norway Pine (possible 1937 bearing tree - distance recorded in 1937 notes believed to be 200 links off, should be 417 links). The in place 1937 brass cap monument is 12.39 feet southerly of a split between the Northeast and Southeast corners. The distances between other General Land Office corners in the area fit within 1-2 feet of the recorded distances. We believe 12.39 feet is too far from the split distance and compute a single, proportion position between the Northeast and Southeast corners. On December 28, they set a 2 inch iron pipe with brass cap over an 8 foot steel sign post in a swamp at proportional position. New bearing trees were marked as shown and steel sign posts set as noted on front of this certificate.