

CERTIFICATE OF LOCATION OF GOVERNMENT CORNER

North Quarter Corner of Section 20, Township 145, Range 31, 5th P.M.

STATE OF MINNESOTA, County of Cass

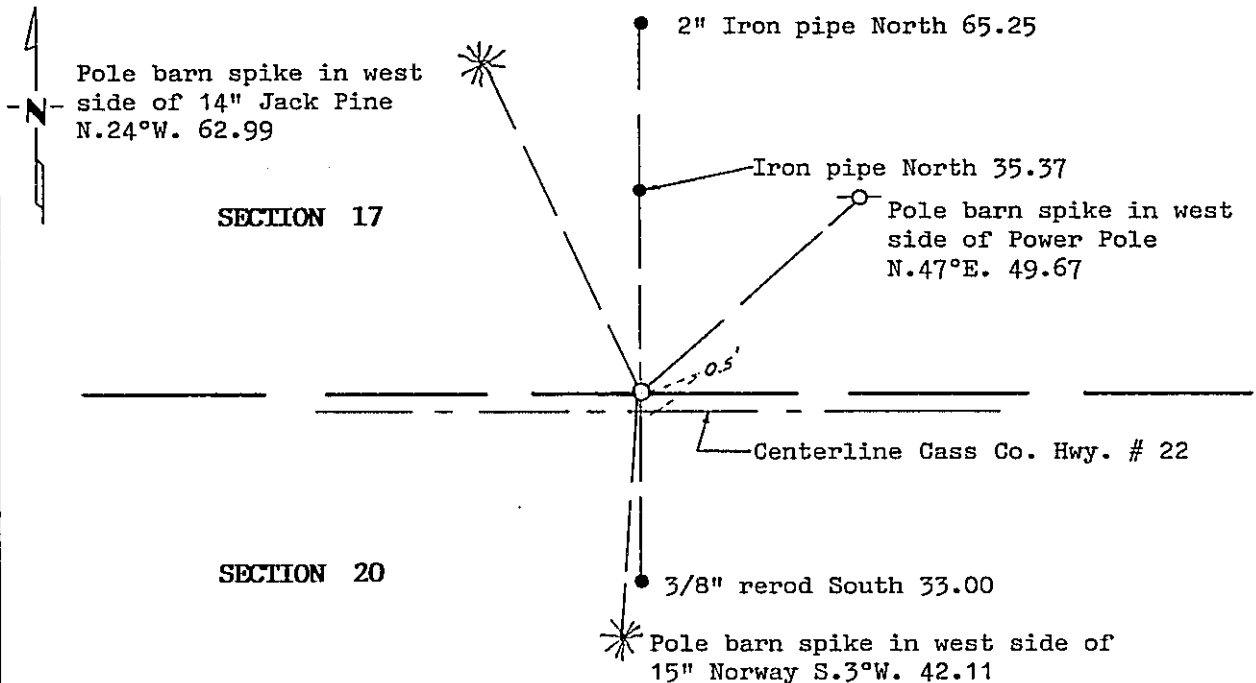
At the corner location shown on the sketch:

On 10/28/93 found a 3/4" Capped pipe, R.L.S. 6807, under bituminous.
DATE

left monument as found, lowered monument, removed monument (explain)

On 10/28/93 placed a Mn/DOT Cast Iron Monument. Top of monument flush
DATE
with highway surface.

SKETCH OF REFERENCE TIES



Trees double blazed and scribed.

Statement of evidence relative to this corner location is on back of page.

357129

I hereby certify that this survey, plan or report was prepared by me or under my direct supervision and that I am a duly Registered Land Surveyor under the laws of the State of Minnesota.

Robert W. Murray
 Date 3-28-94 Registration No. 15483

OFFICE OF THE COUNTY RECORDER
 County of CASS

I hereby certify that this document was filed in the Co. Recorders office at 3:00 P.M. on the 26th day of APRIL A.D., 1994

County Recorder Claudine Kaylar
 By N.B. [Signature], Deputy
 DOCUMENT NO. 357129

Statement of Evidence:

**NORTH QUARTER CORNER SECTION 20, TOWNSHIP 145 NORTH,
RANGE 31 WEST, FIFTH PRINCIPAL MERIDIAN**

1875 The original Public Land Survey was run by Benjamin C. Baldwin. A scribed post was set to mark corner and witness ties were recorded:

10" Jack Pine S. 33° E. 8 links
9" Jack Pine N. 2° E. 12 links

1963 Jack Salo, RLS, indicates spike set for corner by undetermined methods and witness ties as follows:

Iron Pipe North 35.37 feet
Power Pole Northeast 49.17 feet
Tele. Pole Southeast 74.70 feet

1982 Okerman Surveying, Inc., found spike under road surface and northeast Salo bearing tree and iron pipe to the north. He accepted spike for north quarter corner and set 3/4" capped iron pipe RLS 6807 and new witness tie.

14" Norway Pine S. 2° W. 42.09 feet

1992 Murray Surveying, Inc., found 3/4 capped iron pipe RLS 6807 and accepted monument for north quarter corner. Also found Okerman 1982 witness tie.

For information regarding this survey, contact Murray Surveying, Inc., Bemidji, MN.