

CERTIFICATE OF LOCATION OF GOVERNMENT CORNER

North Quarter Corner of Section 19, Township 145, Range 31, 5th P.M.

STATE OF MINNESOTA, County of Cass

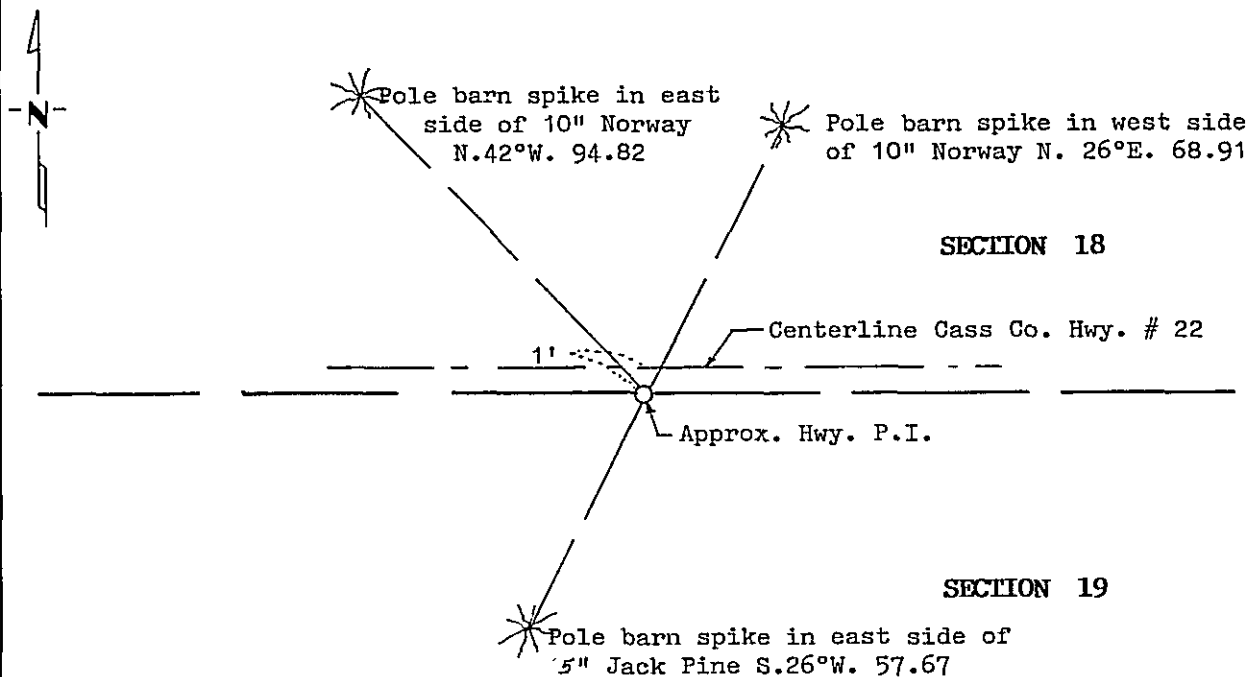
At the corner location shown on the sketch:

On _____ found a _____
DATE

left monument as found, lowered monument, removed monument (explain)

On 10/28/93 placed a Mn/DOT Cast Iron Monument. Top of monument flush
DATE with highway surface.

SKETCH OF REFERENCE TIES



All trees double blazed and scribed.

Statement of evidence relative to this corner location is on back of page.

357127

I hereby certify that this survey, plan or report was prepared by me or under my direct supervision and that I am a duly Registered Land Surveyor under the laws of the State of Minnesota.

Robert W. Murray
Date 3-28-94 Registration No. 15483

OFFICE OF THE COUNTY RECORDER
County of Cass

I hereby certify that this document was filed in the Co. Recorders office at 2:40 P.M. on the 26th day of APRIL A.D., 19 94

County Recorder Claudine Kaylar
By N.B. PROFILM, Deputy
DOCUMENT NO. 357127

Statement of Evidence:

**NORTH QUARTER CORNER SECTION 19, TOWNSHIP 145 NORTH,
RANGE 31 WEST, FIFTH PRINCIPAL MERIDIAN**

1875 The original Public Land Survey was run by Benjamin C. Baldwin. A scribed post was set to mark corner and witness ties were recorded:

12" Jack Pine S. 32° W. 56 links

12" Jack Pine N. 67° E. 53 links

1963 Jack Salo, RLS, set spike for corner by undetermined methods and witness ties as follows:

Power Pole Northwest 75.71 feet

Tele. Pole Southwest 42.85 feet

6" Jack Pine Southeast 59.98 feet

1992 Murray Surveying, Inc., search for and found no evidence of corner. Corner position for north quarter corner of Section 19 established using center line of existing road and proportioned distance between the northeast and northwest section corners of Section 19.

For information regarding this survey, contact Murray Surveying, Inc., Bemidji, MN.