

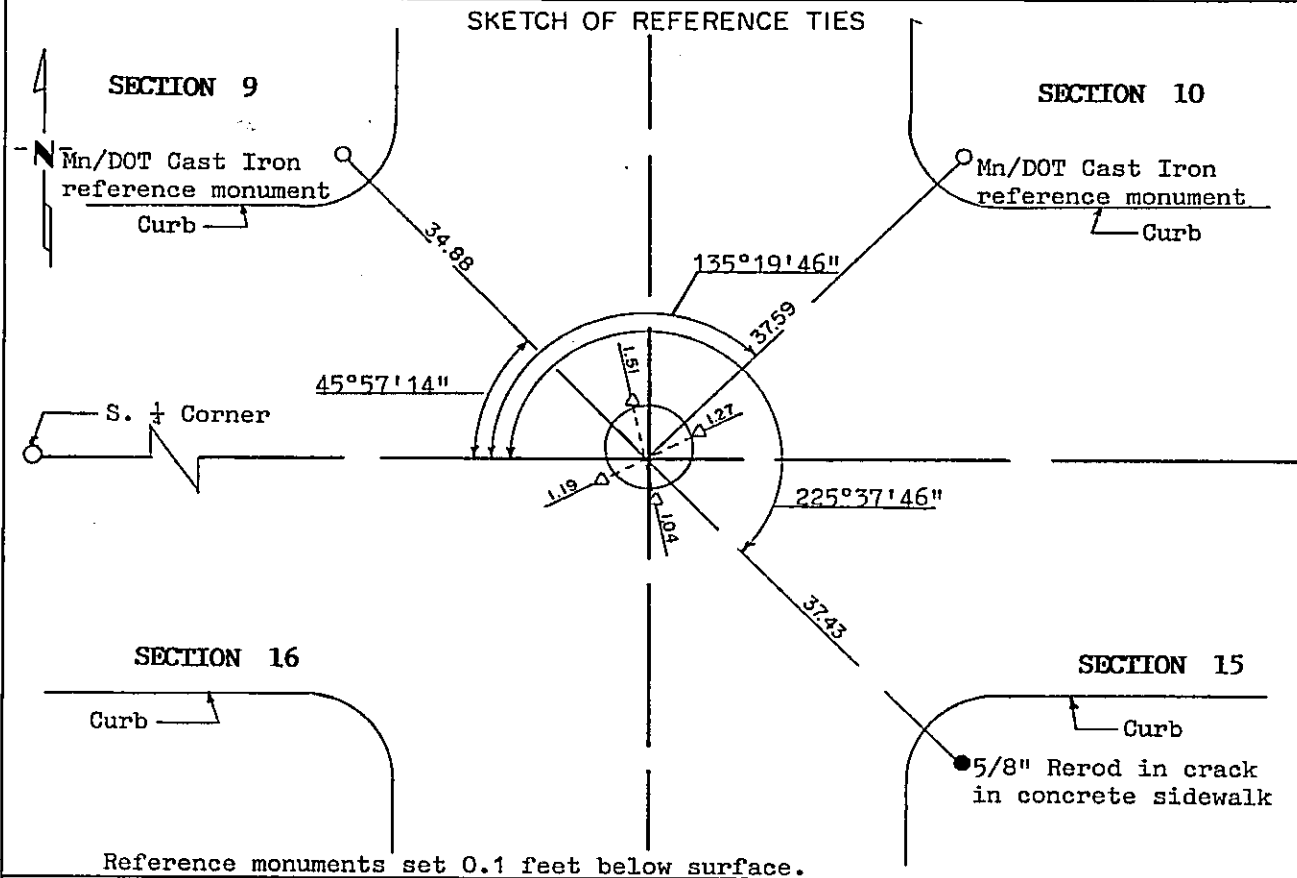
CERTIFICATE OF LOCATION OF GOVERNMENT CORNER

Northeast Corner of Section 16, Township 145, Range 31, 5th P.M.

STATE OF MINNESOTA, County of Cass

At the corner location shown on the sketch:

- On _____ found a _____
DATE
- left monument as found, lowered monument, removed monument (explain)
- On 2/18/94 placed a Placed P.K. nails around rim of Manhole.
DATE



Statement of evidence relative to this corner location is on back of page. 357122

I hereby certify that this document and the data contained herein was prepared by me or under my direct supervision.

Robert W. Murray 3-28-94
SIGNATURE DATE
Registration No. 15483
 Land Surveyor, Professional Engineer
 County Surveyor, County Engineer

OFFICE OF THE COUNTY RECORDER
County of CASS

I hereby certify that this document was filed in the Co. Recorders office at 1:50 P.M. on the 26th day of APRIL A.D., 1994
County Recorder Claudine Kaylar
By N.B. MACROFILM, Deputy
DOCUMENT NO. 357122

Statement of Evidence:

NORTHEAST CORNER SECTION 16, TOWNSHIP 145 NORTH,
RANGE 31 WEST, FIFTH PRINCIPAL MERIDIAN

1875 The original Public Land Survey was run by Benjamin C. Baldwin. A scribed post was set to mark corner and witness ties were recorded:

8" Jack Pine S. 22° E. 110 links

7" Jack Pine S. 49°30' W. 91 links

5" Jack Pine N. 50° W. 61 links

8" Jack Pine N. 75° E. 88 links

1899 B. B. Bartlett surveys the original plat of CASS LAKE. The plat shows the corner as a monument in place.

1906 J. E. Tapley surveys WEST CASS LAKE. The plat shows an iron monument at the corner.

1907 John Curo set iron monument from old government bearing trees. (Survey Record Book A, pages 278-279)

1907 John Curo surveys VAN PELT'S ADDITION TO CASS LAKE. The plat shows an iron monument at the corner.

1913 John Curo found iron monument set and replaced with a 1 1/2" x 48" capped iron pipe. (Survey Record Book D, page 153)

1914 John Curo plats PINE GROVE CEMETERY. Plat shows corner as a large iron monument set.

1975 Okerman Surveying, Inc., established point on manhole for northeast corner of Section 16 from plats within Cass Lake.

1981 Kerick Surveying, Inc., used point established by Okerman and verified by tying into the E 1/16 and E 1/4 corner of Section 9 and the S 1/16 and S 1/4 corner of Section 9 and accepted position as northeast corner of Section 16.

1992 Murray Surveying, Inc., reestablished point on manhole from S 1/16 and E 1/4 corner of Section 9 and the E 1/16 and S 1/4 corner of Section 9 and accepted position for northeast corner of Section 16.

For information regarding this survey, contact Murray Surveying, Inc., Bemidji, MN.