

CERTIFICATE OF LOCATION OF GOVERNMENT CORNER

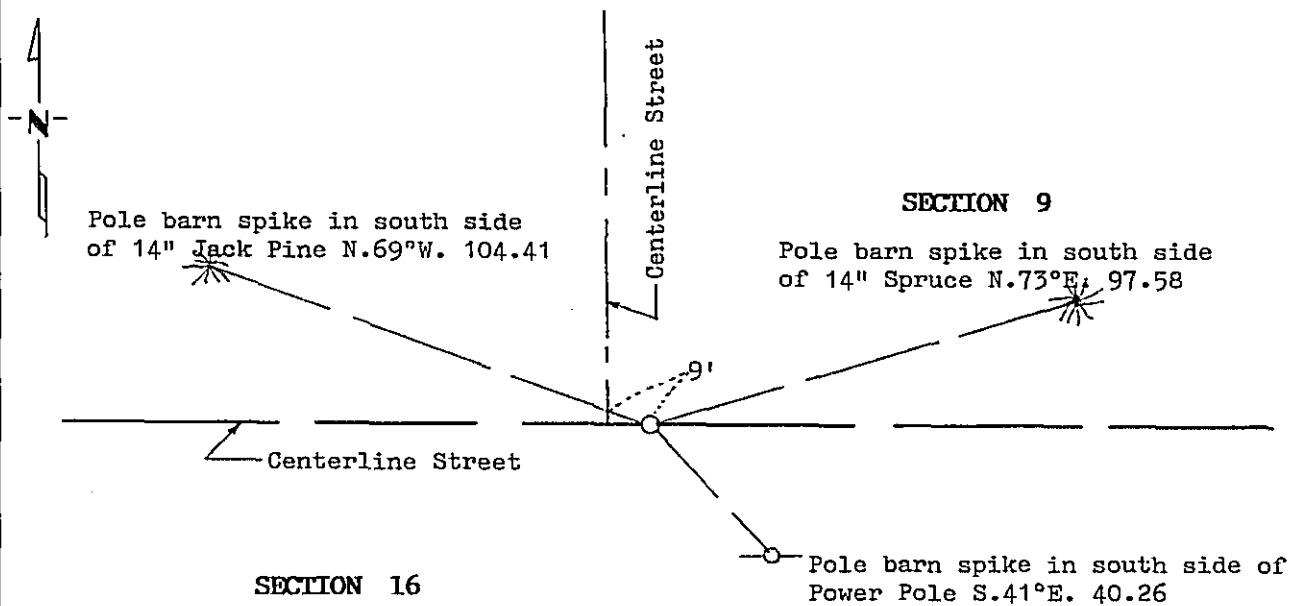
North Quarter Corner of Section 16, Township 145, Range 31, 5th P.M.

STATE OF MINNESOTA, County of Cass

At the corner location shown on the sketch:

- On 10/25/93 found a 1/2" pipe above 1 1/2" Capped pipe, Removed 1/2" pipe.
DATE
- left monument as found, lowered monument, removed monument (explain)
- On 10/25/93 placed a Mn/Dot Cast Iron Monument above 1 1/2" Capped pipe.
DATE
Top of monument flush with street surface.

SKETCH OF REFERENCE TIES



Statement of evidence relative to this corner location is on back of page.

357121

I hereby certify that this document and the data contained herein was prepared by me or under my direct supervision.

Robert W. Murray 3-28-94
SIGNATURE DATE

Registration No. 15463

- Land Surveyor, Professional Engineer
- County Surveyor, County Engineer

OFFICE OF THE COUNTY RECORDER
County of CASS

I hereby certify that this document was filed in the Co. Recorders office at 1:40 P. M. on the 26th day of APRIL A.D., 1994

County Recorder Claudine Kaylar

By N.S. MICROFILM, Deputy

DOCUMENT NO. 357121

Statement of Evidence:

**NORTH QUARTER CORNER SECTION 16, TOWNSHIP 145 NORTH,
RANGE 31 WEST, FIFTH PRINCIPAL MERIDIAN**

1875 The original Public Land Survey was run by Benjamin C. Baldwin. A scribed post was set to mark corner and witness ties were recorded:

11" Jack Pine S. 17° E. 54 links

11" Jack Pine N. 8° E. 68 links

1907 John Curo found iron set by J. Canfield from two old bearing trees.
(Survey Record Book A, pages 278-279)

1913 John Curo found iron and old southeast bearing tree stump. He set 1 1/2" x 48" galv. capped pipe for corner. (Survey Record Book D, page 151)

1914 John Curo plats PINE GROVE CEMETERY. Plat shows corner as a large iron monument set.

1975 Okerman Surveying, Inc., found 1 1/2" capped pipe down 1.4 feet under road surface and used for quarter corner.

1981 Kerick Surveying, Inc., found 1 1/2" capped pipe down 1.4 feet under road surface and used for quarter corner.

1987 Murray Surveying, Inc., found 1 1/2" capped pipe down 1.4 feet under road surface and placed a 1/2" capped pipe above corner.

1992 Murray Surveying, Inc., found 1/2" capped pipe set above 1 1/2" capped pipe and used for north quarter corner of Section 16.

For information regarding this survey, contact Murray Surveying, Inc., Bemidji, MN.