

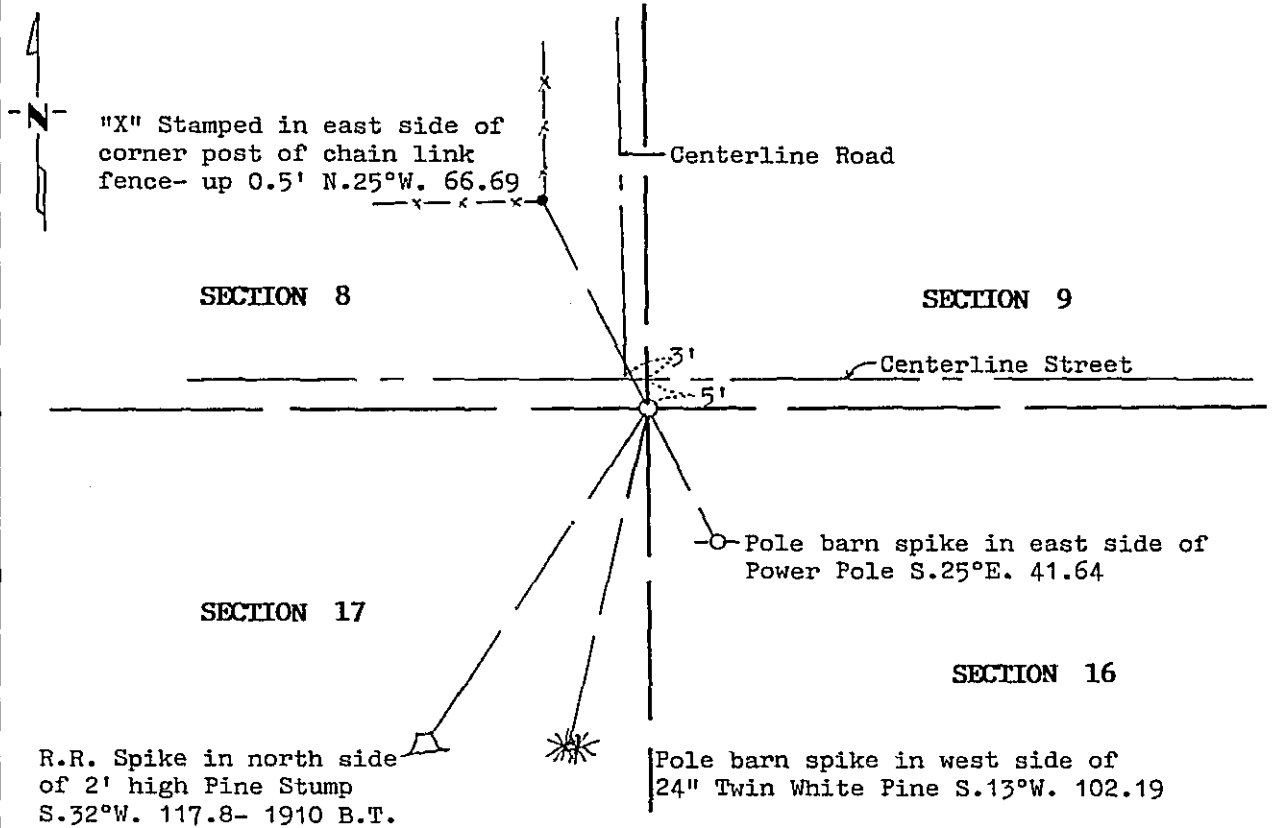
CERTIFICATE OF LOCATION OF GOVERNMENT CORNER

Northeast Corner of Section 17, Township 145, Range 31, 5th P.M.
 STATE OF MINNESOTA, County of Cass

At the corner location shown on the sketch:

- On 10/28/93 found a 1/2" Capped pipe, R.L.S. 15483
DATE
- left monument as found, lowered monument, removed monument (explain)
- On 10/28/93 placed a Mn/DOT Cast Iron Monument. Top of monument flush
DATE with street surface.

SKETCH OF REFERENCE TIES



Statement of evidence relative to this corner location is on back of page.

357120

I hereby certify that this document and the data contained herein was prepared by me or under my direct supervision.

Robert W. Murray 3-28-94
SIGNATURE DATE

Registration No. 15483

- Land Surveyor, Professional Engineer
- County Surveyor, County Engineer

OFFICE OF THE COUNTY RECORDER
 County of CASS

I hereby certify that this document was filed in the Co. Recorders office at 1:30 P. M. on the 26th day of APRIL A.D., 1994

County Recorder Claudine Kayler

By N.S., Deputy

DOCUMENT NO. 357120

Statement of Evidence:

NORTHEAST CORNER SECTION 17, TOWNSHIP 145 NORTH,
RANGE 31 WEST, FIFTH PRINCIPAL MERIDIAN

1875 The original Public Land Survey was run by Benjamin C. Baldwin. A scribed post was set to mark corner and witness ties were recorded:

9" Jack Pine N. 44° W. 214 links
9" Jack Pine S. 62°30' E. 36 links
9" Jack Pine S. 75° W. 236 links
12" Jack Pine N. 2° E. 335 links

1906 John Curo set iron stake into Corduroy Road from three bearing trees. (Survey Record Book A, page 268, 269)

9" Jack Pine S.65°37' E. 47.60 feet

1910 James Middleton found bridge spike set from old government bearing trees to the northwest and southwest and made additional witness ties. (Survey Record Book B, page 576)

15" Jack Pine S. 58°24' E. 64.55 feet
14" Jack Pine S. 22°10' W. 117.80 feet
9" Jack Pine N. 59°19' W. 119.63 feet

1913 John Curo found bolt set by himself and his 1906 bearing tree stump and set a 1 1/2 inch x 48 inch galvanized capped pipe. (Survey Book D, page 153)

1914 John Curo plats PINE GROVE CEMETERY. Plat shows corner as a large iron monument set.

1992 Murray Surveying, Inc., found 8" piece of 1 1/4" iron pipe down 2.5 feet and remains of 1910 southwest bearing tree with rail road spike. Set a MNDOT monument at the established position for the northeast corner of Section 17.

For information regarding this survey, contact Murray Surveying, Inc., Bemidji, MN.