

# CERTIFICATE OF LOCATION OF GOVERNMENT CORNER

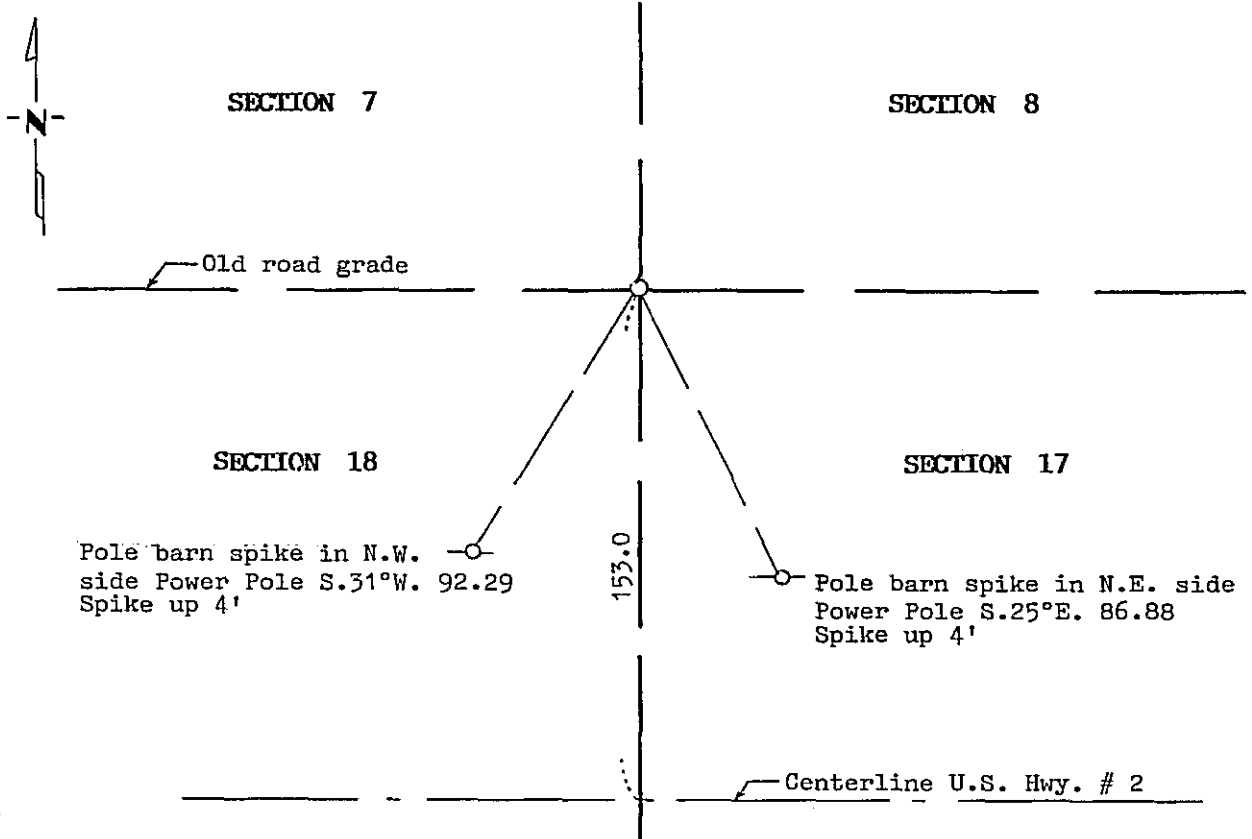
Northeast Corner of Section 18, Township 145, Range 31, 5th P.M.

STATE OF MINNESOTA, County of Cass

At the corner location shown on the sketch:

- On 10/29/93 found a P.K. nail as set by MURRAY SURVEYING, INC. in 1992.  
DATE
- left monument as found,  lowered monument,  removed monument (explain)
- On 10/29/93 placed a Mn/DOT Cast Iron Monument. Top of monument flush  
DATE  
with highway surface.

### SKETCH OF REFERENCE TIES



Statement of evidence relative to this corner location is on back of page.

357118

I hereby certify that this survey, plan or report was prepared by me or under my direct supervision and that I am a duly Registered Land Surveyor under the laws of the State of Minnesota.

Robert W. Murray  
 Date 3-28-94 Registration No. 15483

OFFICE OF THE COUNTY RECORDER  
 County of CASS

I hereby certify that this document was filed in the Co. Recorders office at 1:10 P. .M. on the 26th day of APRIL, A.D., 1994

County Recorder Claudine Kaylaw  
 By N.S. MICROFILM, Deputy  
 DOCUMENT NO. 357118

Statement of Evidence:

**NORTHEAST CORNER SECTION 18, TOWNSHIP 145 NORTH,  
RANGE 31 WEST, FIFTH PRINCIPAL MERIDIAN**

**1875** The original Public Land Survey was run by Benjamin C. Baldwin. A scribed post was set to mark corner and witness ties were recorded:

14" Jack Pine N. 58° E. 398 links  
12" Jack Pine S. 5° W. 348 links  
9" Jack Pine S. 3° E. 291 links  
16" Norway Pine N. 3° W. 900 links

**1906** John Curo found old government post and all four government bearing trees and set a 2" x 36" iron pipe. ( Survey Record Book A, page 266-277 )

**1912** John Curo found corner had been graded out and reset corner from the northeast, southeast, and southwest government bearing trees. He set post in center of road for corner and additional witness ties. ( Survey Record Book D, page 147 )

Tack in SE BT S. 3° E. 192.68 feet  
Tack in SW BT S. 5°17' W. 226.54 feet  
8" Jack Pine N. 85°38' E. 160.83 feet

**1943** H. Sorenson of the Minnesota Highway Department conducted a location survey of Trunk Highway 2 and assumed corner at road center lines and tied position into new highway center line.

**1993** Murray Surveying, Inc. found no evidence of corner as County Road had been recently rebuilt. Established corner from 1943 highway notes and accepted position as obliterated position for the northeast corner of Section 18.

For information regarding this survey, contact Murray Surveying, Inc., Bemidji, MN.