

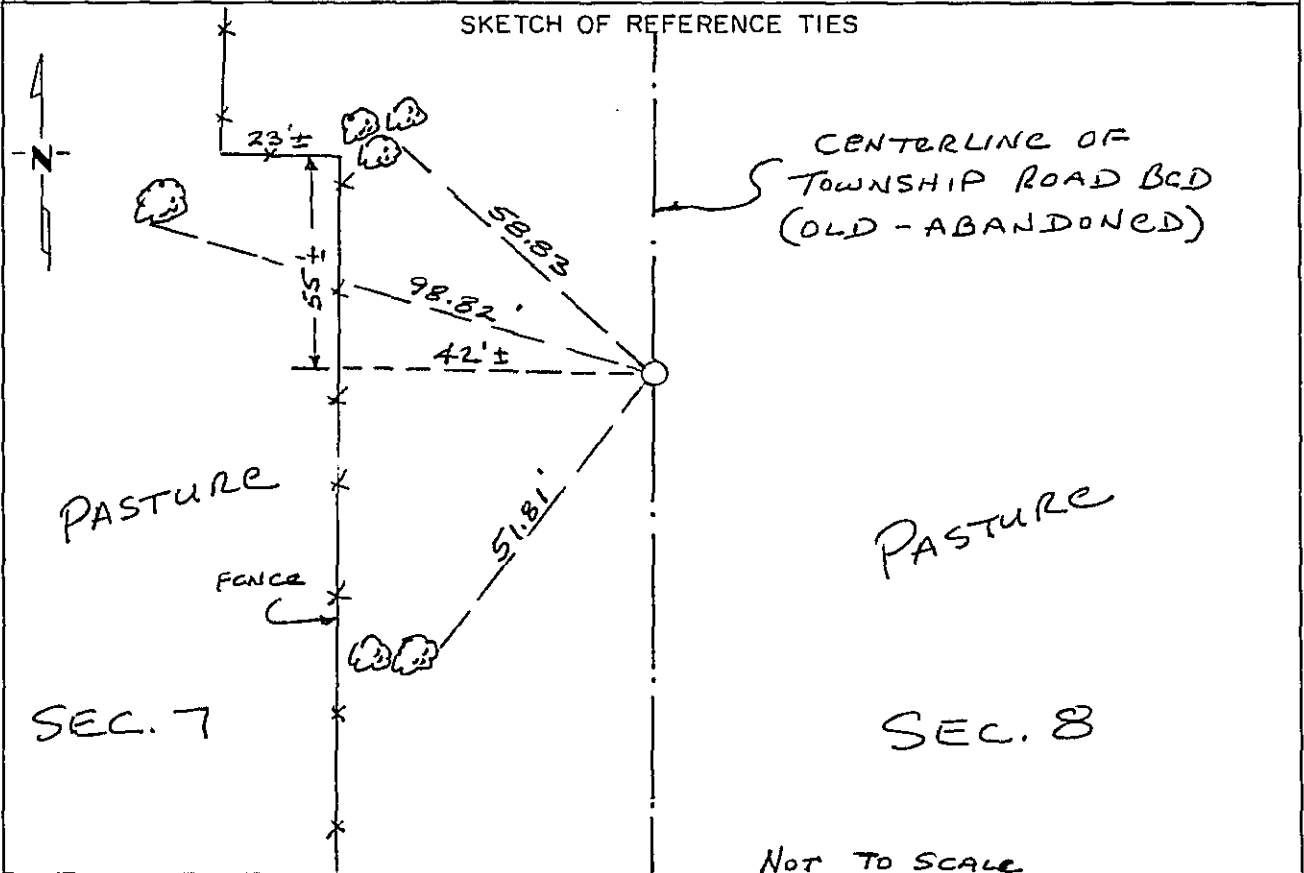
CERTIFICATE OF LOCATION OF GOVERNMENT CORNER

East Quarter _____ Corner of Section 7, Township 134, Range 31, 5th P.M.

STATE OF MINNESOTA, County of Cass

At the corner location shown on the sketch:

- On _____ found a _____
DATE
- left monument as found, lowered monument, removed monument (explain)
- On June, 1992 placed a 1/2" iron pipe monument capped RLS No. 16097
DATE



Statement of evidence relative to this corner location is on back of page. 357105

I hereby certify that this document and the data contained herein was prepared by me or under my direct supervision.

[Signature]
SIGNATURE
APRIL 18, 1994
DATE

Registration No. 16097

- Land Surveyor, Professional Engineer
- County Surveyor, County Engineer

OFFICE OF THE COUNTY RECORDER
County of CASS

I hereby certify that this document was filed in the Co. Recorders office at 11:00 A.M. on the 26th day of APRIL A.D., 1994

County Recorder Claudine Kaylar

By N.S. MICROHELM, Deputy

DOCUMENT NO. 357105

Statement of Evidence:

The East Quarter Corner of Section 7, Township 134, Range 31, 5th Principal Meridian, Cass County, Minnesota, was set under the Public Land Survey as a post with two bearing trees in 1869. No trace of post or bearing trees now exist.

On June 25, 1902, May Township issued a Supervisor's Road Order and laid out by survey a 4 rod road centered on the line between Sections 5 and 6, and Sections 7 & 8.

On April 30, 1971, May Township issued a resolution to close the road running between Sections 7 & 8.

The County Surveyor's Office was contacted and corner card information was obtained.

In 1992, while surveying the common line between Sections 7 and 8, the area of the obliterated position for the east quarter corner of Section 7 was searched at a point on the centerline of the abandoned township road equidistant from the northeast and southeast corners of Section 7. The area was hand dug and scanned with a metal detector. No corner evidence was found. A 1/2" iron pipe capped RLS No. 16097 was set at this obliterated position and is accepted as the position for the east quarter corner of Section 7/