

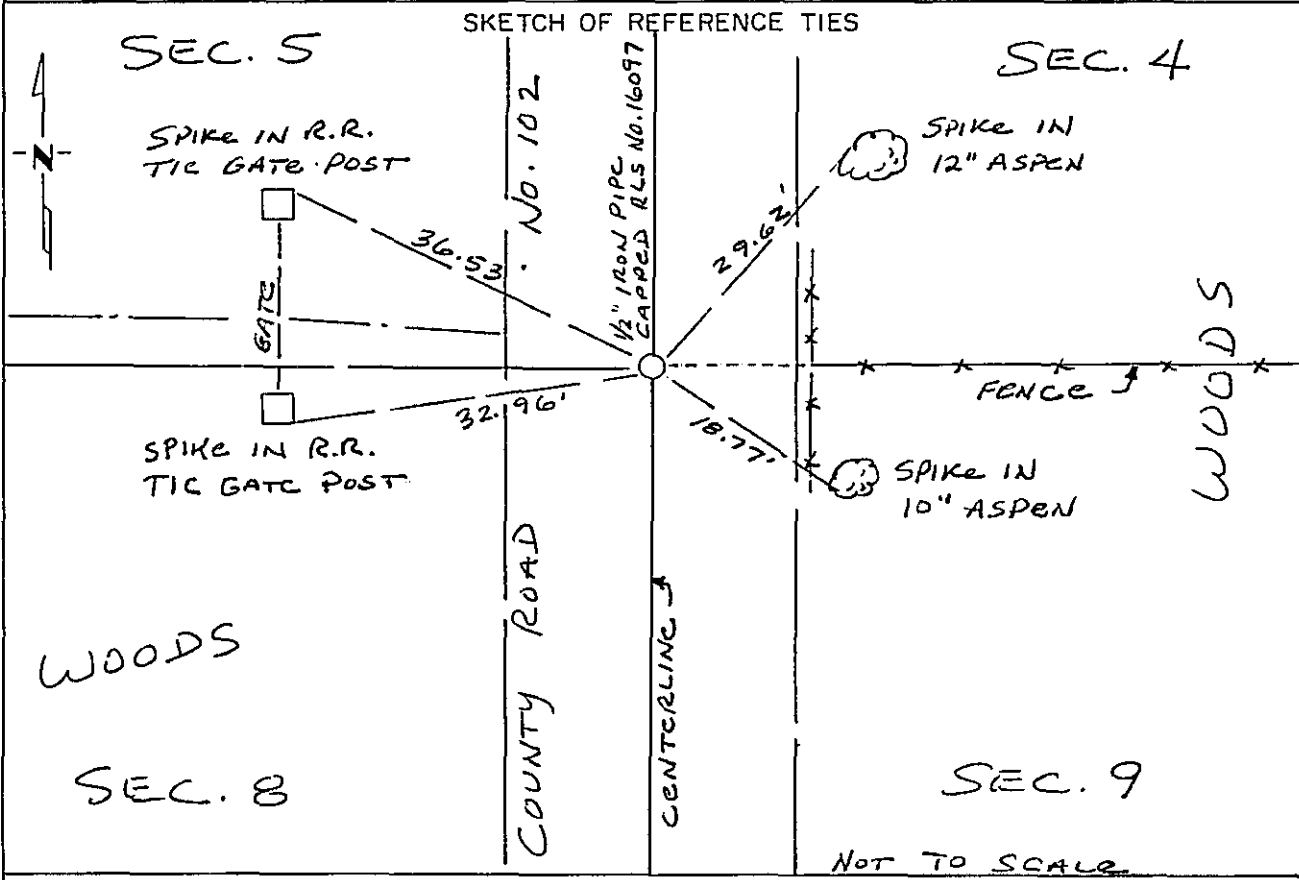
# CERTIFICATE OF LOCATION OF GOVERNMENT CORNER

Northeast Corner of Section 8, Township 134, Range 31, 5th P.M.

STATE OF MINNESOTA, County of Cass

At the corner location shown on the sketch:

- On \_\_\_\_\_ found a \_\_\_\_\_  
DATE
- left monument as found,  lowered monument,  removed monument (explain)
- On Oct., 1993 placed a 1/2" iron pipe monument capped RLS No. 16097  
DATE



NOT TO SCALE

Statement of evidence relative to this corner location is on back of page. 357104

I hereby certify that this document and the data contained herein was prepared by me or under my direct supervision.

*[Signature]*  
SIGNATURE

APRIL 19, 1994  
DATE

Registration No. 16097

Land Surveyor,  Professional Engineer

County Surveyor,  County Engineer

OFFICE OF THE COUNTY RECORDER  
County of CASS

I hereby certify that this document was filed in the Co. Recorders office at 10:50 A. M. on the 26th day of APRIL A.D., 1994

County Recorder Claudine Keylor  
By N.B. MICROFILM, Deputy

DOCUMENT NO. 357104

Statement of Evidence:

The Northeast Corner of Section 8, Township 134, Range 31, 5th Principal Meridian, Cass County, Minnesota, was set under the Public Land Survey as a post with four bearing trees in 1869. No traces of post or bearing trees now exist.

The County Surveyor's Office was contacted and on the corner card it was noted that in 1915 N.D. Gorman found a corner set by Whitely. Ref: County Surveyor Book "B". Pg. 490-495

In 1993, while surveying the perimeter of Section 5, the obliterated position for the southeast corner of Section 5, being also the northeast corner of Section 8, was searched by scanning with a metal detector at the intersection of an old fence line east with the north-south centerline of County Road No. 102. No evidence of the Whitely corner was found. This area appears to have possibly been subcut. This obliterated position fits well with distances measured north and west during the sectional subdivision and is accepted as the position for the northeast corner of Section 8. A 1/2 inch iron pipe monument capped RLS No. 16097, was set at this position.