

# CERTIFICATE OF LOCATION OF GOVERNMENT CORNER

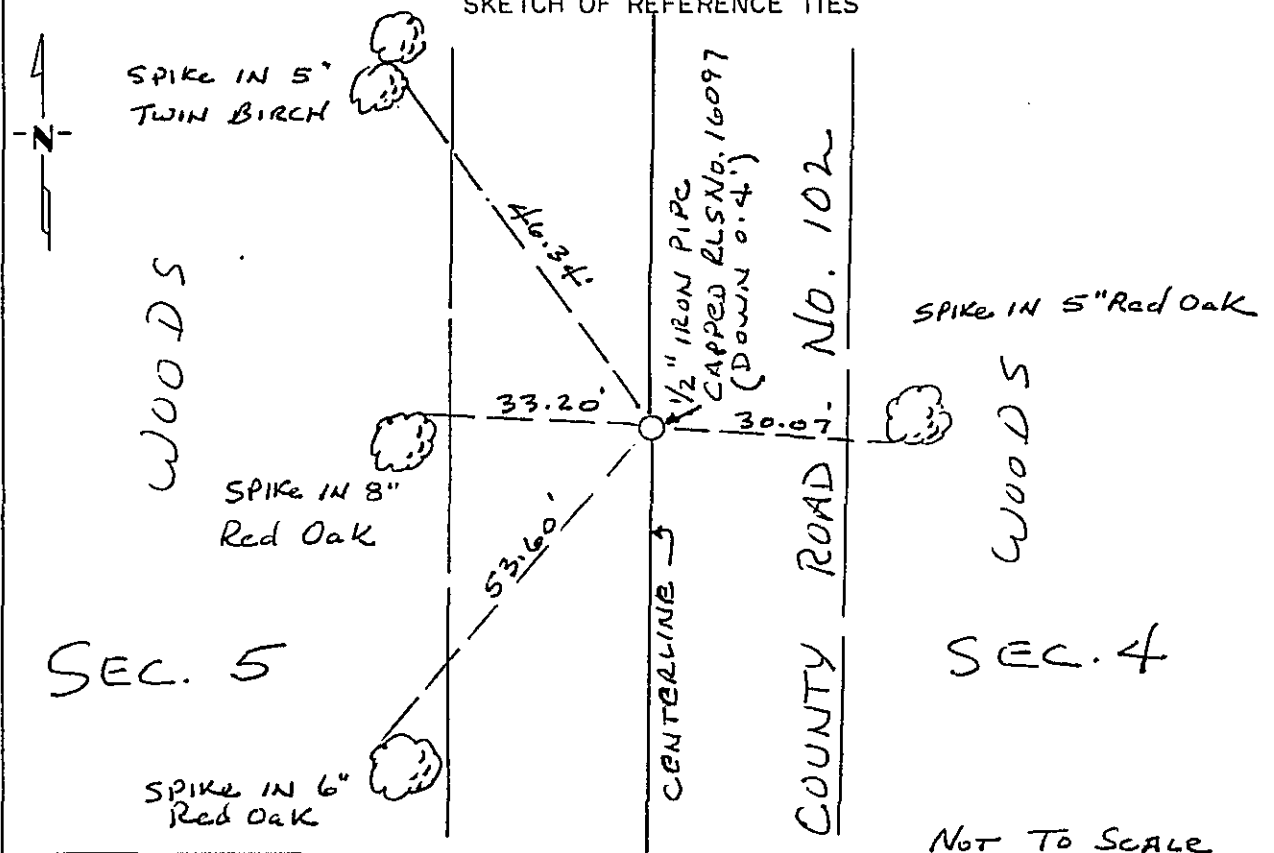
East Quarter \_\_\_\_\_ Corner of Section 5, Township 134, Range 31, 5th P.M.

STATE OF MINNESOTA, County of Cass

At the corner location shown on the sketch:

- On \_\_\_\_\_ found a \_\_\_\_\_  
DATE
- left monument as found,  lowered monument,  removed monument (explain)
- On Oct., 1993 placed a 1/2" iron pipe monument capped RLS No. 16097  
DATE

### SKETCH OF REFERENCE TIES



Statement of evidence relative to this corner location is on back of page. 357102

I hereby certify that this document and the data contained herein was prepared by me or under my direct supervision

[Signature]  
SIGNATURE  
APRIL 19, 1994  
DATE

Registration No. 16097  
 Land Surveyor,  Professional Engineer  
 County Surveyor,  County Engineer

OFFICE OF THE COUNTY RECORDER  
County of CASS

I hereby certify that this document was filed in the Co. Recorders office at 10:30 A. .M. on the 26th day of APRIL A.D., 1994

County Recorder Claudine Kaylar  
By N.S. [Signature], Deputy  
DOCUMENT NO. 357102

Statement of Evidence:

The East Quarter Corner of Section 5, Township 134 Range 31, 5th Principal Meridian, Cass County, Minnesota, was set under the Public Land Survey as a post with 2 bearing trees in 1869. No traces of post or bearing trees now exist.

The County Surveyor's Office was contacted and corner card information was obtained. *1915 COUNTY SURVEYOR BOOK B, P. 484-495, NOTES CORNER SET BY WHITELEY, FOUND BY GORMAN.*

In 1993, while surveying the perimeter of Section 5, the obliterated position for the east quarter corner of Section 5 was searched at a point at prorated distances from the northeast and southeast corners of Section 5 on the centerline of County Road No. 102. The area was hand dug and scanned with a metal detector. No evidence of the corner was found and no other obliterated evidence for a position was found. A 1/2 inch iron pipe monument was set at this obliterated position and is accepted as the position for the east quarter of Section 5.