

CERTIFICATE OF LOCATION OF GOVERNMENT CORNER

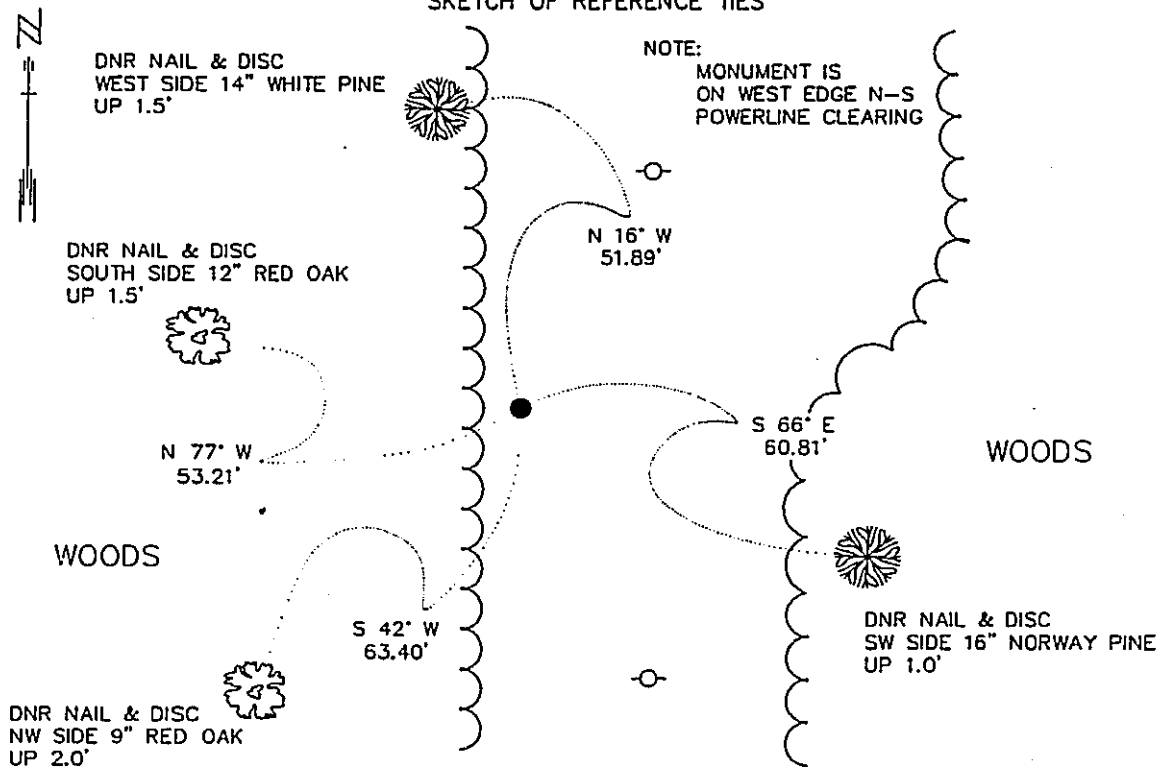
EAST QUARTER Corner of Section 11, Township 134 N, Range 30 W, 5th P.M.

STATE OF MINNESOTA, County of CASS

At the corner location shown on the sketch:

- On _____ found a _____
- DATE
- left monument as found, lowered monument, removed monument (explain)
- On 7-19-93 Placed a 3/4" x 24" REBAR WITH ALUMINUM CAP STAMPED
- DATE "DNR SURVEY MARKER", UP 0.2'

SKETCH OF REFERENCE TIES



BEARINGS OBSERVED WITH COMPASS

Statement of evidence relative to this corner location is on back of page.

SFT00039.04.00.01
J.B.M. AUG. 1993

I hereby certify that this document and the data contained herein was prepared by me or under my direct supervision.

Lowell R. Romer SIGNATURE 8-25-93 DATE

Registration No. 17005

- Land Surveyor, Professional Engineer
- County Surveyor, County Engineer

OFFICE OF THE COUNTY RECORDER 351916
County of CASS

I hereby certify that this document was filed in the Co. recorders office at 4:22 P.M. on the 14th day of OCTOBER A.D., 1993

County Recorder Claudine Kayler
By N.B. Deputy

DOCUMENT NO. 351916

East Quarter Corner Section 11, Township 134 North, Range 30 West

The DNR Bureau of Engineering contacted the following offices for information regarding this corner:

MN Secretary of State
Cass County Surveyor
Cass County Highway Engineer

1868 The U.S. General Land Office field notes, on file in the Secretary of State's Office, show this corner to be marked with a post and marked the following bearing trees:

N. Pine 19" S 68° W 24 lks., N. Pine 6" N 8 1/2° E 7 lks

1993 July, the DNR Bureau of Engineering conducted a search for this corner, but found no evidence of a monument or bearing trees. Scanned the corner area with a electronic metal locator but found nothing. The corner area is in a power line clearing, void of occupation lines. Computed the lost position for this corner and found it to measure:

2649.58 ft. from adjoining section corners.

On the west edge of the power line clearing.
Searched again at the lost position but found nothing.

Analysis of the available information led the DNR Bureau of Engineering to conclude that the lost position should be used for the corner.