

CERTIFICATE OF LOCATION OF GOVERNMENT CORNER

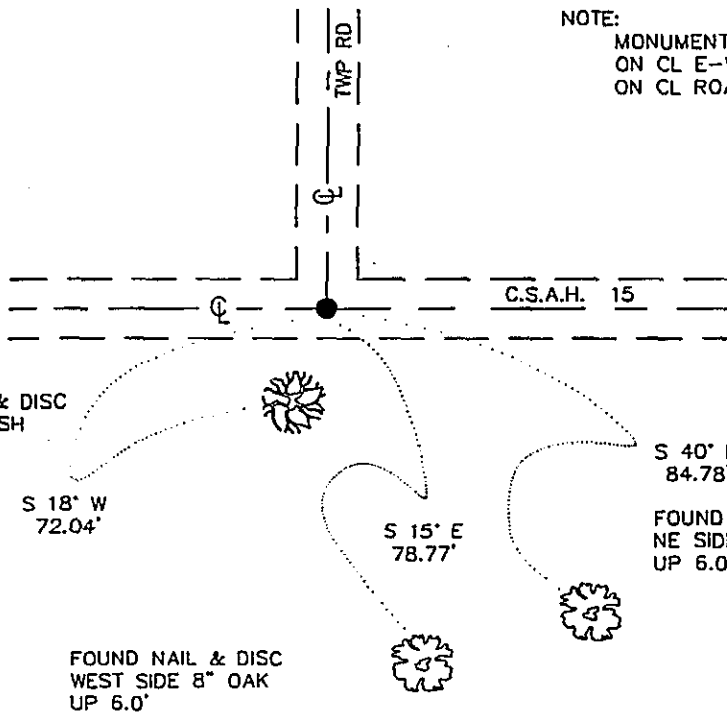
NORTHEAST Corner of Section 10, Township 134 N, Range 30 W, 5th P.M.

STATE OF MINNESOTA, County of CASS

At the corner location shown on the sketch:

- On 6-28-93 found a 7/8" IRON ROD, DOWN 0.1'
DATE
- left monument as found, lowered monument, removed monument (explain)
- On _____ Placed a _____
DATE

SKETCH OF REFERENCE TIES



NOTE:
MONUMENT IS
ON CL E-W ROAD
ON CL ROAD NORTH

BEARINGS OBSERVED WITH COMPASS

Statement of evidence relative to this corner location is on back of page.

SFT00039.04.00.01
J.B.M. AUG. 1993

I hereby certify that this document and the data contained herein was prepared by me or under my direct supervision.

Lowell R. Rummeling SIGNATURE 8-25-93 DATE

Registration No. 17005

- Land Surveyor, Professional Engineer
- County Surveyor, County Engineer

OFFICE OF THE COUNTY RECORDER 351913
County of CASS

I hereby certify that this document was filed in the Co. recorders office at 4:16 P.M. on the 14th day of OCTOBER A.D., 1993

County Recorder Claudine Kaylan
By N.B Deputy

DOCUMENT NO. 351913

Northeast Corner Section 10, Township 134 North, Range 30 West

The DNR Bureau of Engineering contacted the following offices for information regarding this corner:

MN Secretary of State
Cass County Surveyor
Cass County Highway Engineer

- 1868 The U.S. General Land Office field notes, on file in the Secretary of State's Office, show this corner to be marked with a post and marked the following bearing trees:
Pine 26" N 50° E 10 lks., Pine 25" S 12° E 28 lks.
Pine 18" S 26° W 37 lks.
- 1914 Cass County Land Corner Record Card, on file in the County Surveyor's Office, shows in County Survey Record Book B, on Pages 32 to 34, John Curo found all of the government bearing trees. Set a 2 1/2" x 48" galvanized iron pipe with cap.
- 1915 Cass County Land Corner Record Card, on file in the County Surveyor's Office, shows in County Survey Record Book B, on Pages 494 to 495, N.D. Gorman found the corner. This information is also on microfilm roll 115 Book 79 Page 129. Two reference ties are shown:
W. Pine Stump 30" S 63° E 44.78 ft., N. Pine Stump 24" N 53° E 54.88 ft.
- No Date The right-of-way map for County State Aid Highway 15 shows an in-place monument at this corner. Corner is shown at the intersection of roads east-west and north.
- 1990 Cass County Land Corner Record Card, on file in the County Surveyor's Office, shows W. Curo set a pin and temporary ties with a county highway crew.
- 1993 June 28, the DNR Bureau of Engineering conducted a search for the corner and found a 7/8" iron rod, down 0.1 feet. Iron rod is at the intersection of roads east-west and north. Searched for and found the 1990 ties which were found to agree with the iron rod. No other record ties could be found. Iron rod was found to measure:
2652.96 ft. from the north quarter corner Section 11
2650.55 ft. from the east quarter corner Section 10
2624.05 ft. from the north quarter corner Section 10

Analysis of the available information led the DNR Bureau of Engineering to conclude that the iron rod marks the location of the corner. It is unknown if the iron rod was set in place of the 1914 monument set by John Curo, however its relative location is in agreement with local occupation.