

CERTIFICATE OF LOCATION OF GOVERNMENT CORNER

Northeast Corner of Section 19, Township 143, Range 31, 5th P.M.

STATE OF MINNESOTA, County of Cass

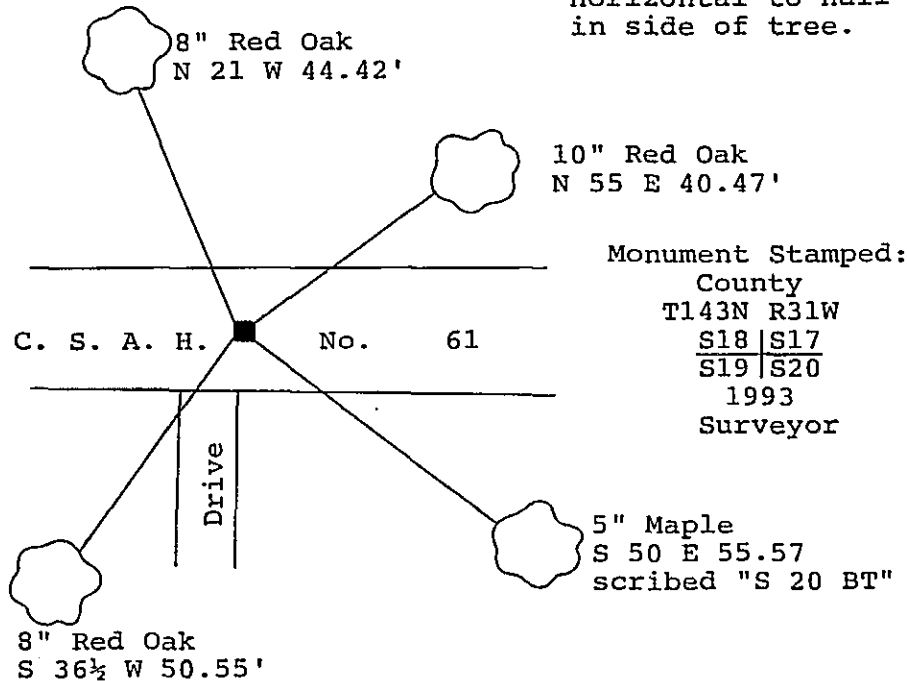
At the corner location shown on the sketch:

- On 6/21/93 found a 2" iron pipe monument, badly bent
DATE
- left monument as found, lowered monument, removed monument (explain)
- On 6/21/93 placed a 2" square x 18" long telspar monument, down
DATE
12" with stamped aluminum cap, inplace of found iron pipe.

Magnetic Decl: 5° East
 Not to Scale

SKETCH OF REFERENCE TIES

All distances are horizontal to nail in side of tree.



Monument is 3' southerly of centerline of East-West road and 2' easterly of drive southerly.

Monument Stamped:
 County
 T143N R31W
 S18 | S17
 S19 | S20
 1993
 Surveyor

Statement of evidence relative to this corner location is on back of page.

348669

I hereby certify that this survey, plan or report was prepared by me or under my direct supervision and that I am a duly Registered Land Surveyor under the laws of the State of Minnesota.

Terry L. Freeman
 Terry L. Freeman
 Date 7/1/93 Registration No. 21367

OFFICE OF THE COUNTY RECORDER
 County of CASS

I hereby certify that this document was filed in the Co. Recorders office at 1:50 P.M. on the 2nd day of July A.D., 19 93

County Recorder Claudia Kaylar
 By N.B., Deputy
 DOCUMENT NO. 348669

Statement of Evidence:

Northeast corner, Section 19, Township 143
North, Range 31 West, Cass County, Minnesota

N - 5

- 1875 U.S. General Land Office set a wood post while subdividing Township 143 North, Range 31 West. Bearing Trees: 30 inch White Pine South 14° East 65 lks, 30 inch White Pine South 18° West 70 lks, 6 inch Red Oak North 85° West 78 lks, 8 inch Red Oak North 48° East 9 lks.
- 1917 Cass County Survey records in Book "C" pg 79 show a survey by E.B. Horst. The notes state that he found Curo's stake and all four government bearing tree stumps. He set a 2 inch by 48 inch iron monument. The notes indicate that he marked the following bearing trees: 9 inch fence post North 33.0 feet, 10 inch Oak North 37° West 112.6 feet, Northeast corner school house South 20° 20' West 142.0 feet.
- 1918 The plat of GOLDEN GATE CEMETERY by E.B. Horst shows corner in place.
- 1919 U.S. General Land Office dependent resurvey notes show they found the stumps of all four original bearing trees. They set a 2 inch by 36 inch iron pipe with stamped brass cap. They raised a mound of stone with 2 foot base 1 1/2 feet high, west of corner and marked the following bearing trees: 16 inch Red Oak North 34° 15' West 185 lks, Northeast corner burned school house foundation South 22 1/4° West 201 lks.
- 1969 R.F. Schneider, Registered Land Surveyor Number 5740, set a 2 inch iron pipe 3 feet south of road centerline from government survey tie to corner school house foundation and corners of cemetery per plat of 1918. He marked the following bearing trees: 8 inch Red Oak North 55° East 40.47 feet, 9 inch Red Oak South 9° East 44.03 feet, 6 inch Red Oak South 36° 30' West 50.55 feet and 8 inch Red Oak North 21° West 44.42 feet.
- 1976 Minnesota Department of Natural Resources - Bureau of Engineering (map and preliminary corner certificate in Twp file in County Survey Office) found 2 inch iron pipe and 1969 R.F. Schneider ties.
- 1993 On June 21, a Landecker & Assoc. survey crew found the 2 inch iron pipe as set in 1969 by R.F. Schneider to be badly bent. They found 3 of the 4, 1969 ties (SE Oak BT gone). They replaced the found iron pipe with a 2 inch square by 18 inch long county telspar monument with stamped aluminum cap. They scribe one new bearing tree as shown on front of this certificate. The remaining 1969 BT's are in good condition. This monument is a perpetuation of the original Northeast corner of said Section 19.