

CERTIFICATE OF LOCATION OF GOVERNMENT CORNER

East Quarter _____ Corner of Section 12, Township 141, Range 28, 5th P.M.

STATE OF MINNESOTA, County of Cass

At the corner location shown on the sketch:

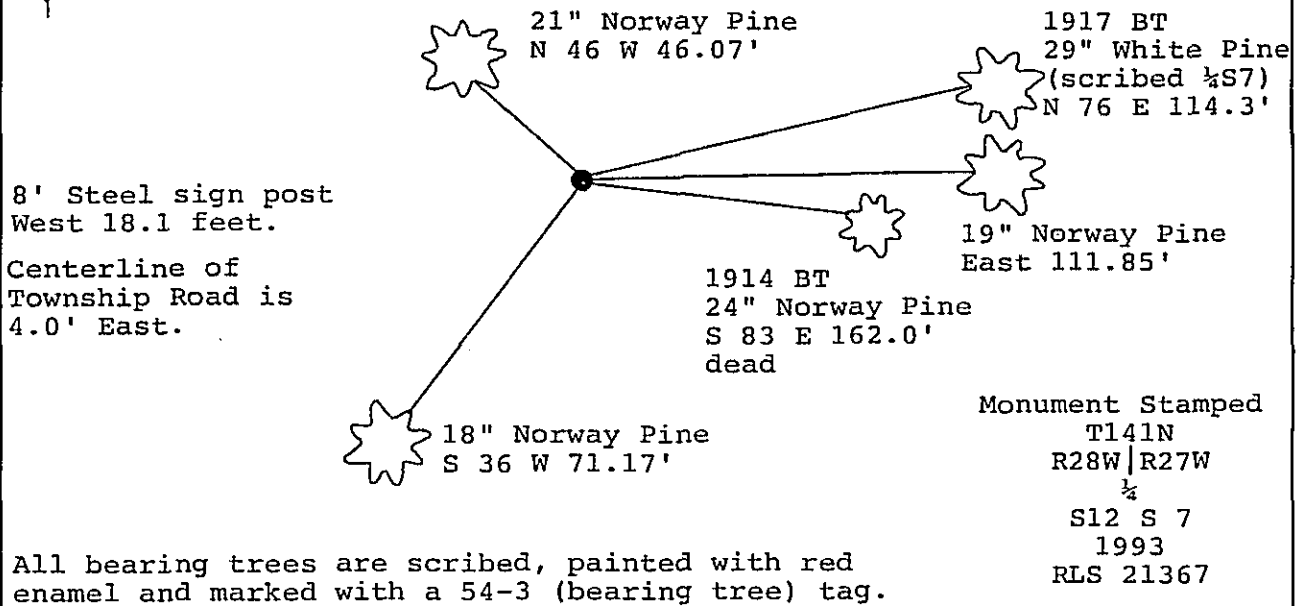
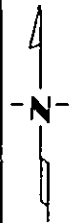
On 6/25/91 found a 6 inch concrete cylinder with brass cap, down
DATE
12 inches and a 7/8 inch by 20 inc square pin.

left monument as found, lowered monument, removed monument (explain)

On 5/3/93 placed a 2 inch by 24 inch iron monument with brass
DATE
cap inplace of found iron pin

Magnetic Decl: 5° East SKETCH OF REFERENCE TIES
 Not to Scale

All distances are horizontal to nail in side of tree



All bearing trees are scribed, painted with red enamel and marked with a 54-3 (bearing tree) tag.

Statement of evidence relative to this corner location is on back of page.

I hereby certify that this survey, plan or report was prepared by me or under my direct supervision and that I am a duly Registered Land Surveyor under the laws of the State of Minnesota.

Terry L. Freeman
 Terry L. Freeman
 Date 5/20/93 Registration No. 21367

OFFICE OF THE COUNTY RECORDER
 County of CASS

I hereby certify that this document was filed in the Co. Recorders office at 2:30 P. M. on the 21st day of MAY A.D., 19 93

County Recorder Claudine Kaylar
 By N.B., Deputy

DOCUMENT NO. 347 442

Statement of Evidence:

East Quarter corner, Section 12, Township 141 North,
Range 28 West, Cass County, Minnesota

G - 25

1873 P.H. Conger, U.S. Deputy Surveyor, originally established this corner position while running the east line of Township 141 North, Range 28 West. The notes indicate a wood post was set to mark the corner position and the following witnesses: a 30 inch White Pine South 5 degrees East a distance of 80 links.

1913 County Surveyor's Record Book "A", pages 564-567 shows a survey by John Curo. The notes indicate that he started at the corner and ran south.

1914 County Surveyor's Record Book "B", pages 277-281 shows a survey by James Middleton. The notes indicate that he found the old government bearing tree: downed 30 inch White Pine South 5 degrees East a distance of 80 links. He set a 1 inch by 1 inch by 20 inch drift bolt and marked the following bearing trees: a 12 inch Norway Pine South 89 degrees 30 minutes East a distance of 162.06 feet; and a 12 inch Red Oak South 85 degrees 30 minutes West a distance of 64.37 feet.

1915 County Surveyor's Record Book "B", page 572 and on microfilm roll 11 S, book 90, page 36 shows a survey by N.D. Gorman. The notes indicate that he set the corner from the old government bearing tree. The notes also indicate that he does not agree with Middleton's positions by a distance of 3 feet.

1917 County Surveyor's Record Book "B", pages 589-591 shows a survey by J.H. Flynn. The notes indicate that he found the old government bearing tree: an 8 foot stump of a 30 inch White Pine South 5 degrees East a distance of 80 links and marked the following bearing trees: a 13 inch Black Oak North 75 degrees West a distance of 67 feet; and a 16 inch White Pine North 76 degrees 30 minutes East a distance of 114.3 feet.

1918 General Land Office survey, filed at the Secretary of State, shows that a 1 inch by 36 inch iron pipe with brass cap was set at the proportional position and the following bearing trees marked: a 14 inch Norway Pine South 85 degrees East a distance of 129 links; and a 14 inch Red Oak North 67 and 1/4 degrees West a distance of 121 links.

No date, County ditch survey book 103, in box 3 of County Ditch Survey Books, page 28. Notes mention corner in place.

1972 United States Forest Service records in Book 6, page 50 of Township 141 North, Range 28 West, show that Curt Krause set a 2 inch by 60 inch iron monument with a stamped brass cap from the found 1918 General Land Office Norway Pine bearing tree.

1978 United States Forest Service records in Book 6, page 50 of Township 141 North, Range 28 West, show that they searched for the corner and evidence, and determined that the 1918 General Land Office distance to the Norway Pine bearing tree was in error by 1.00 chains and should read 229 links. The notes indicate that a 6 inch by 6 inch by 24 inch concrete post with a 3 inch brass cap was set at the proportional position between the South one-sixteenth corner and the Northeast corner of Section 12 and the following bearing trees marked: an 18 inch Red Pine North 80 degrees East a distance of 103.53 feet; a 24 inch Red Pine (GLO) South 85 degrees East a distance of 152.60 feet; a 21 inch Red Pine South 50 degrees West a distance of 67.32 feet; and a 19 inch Red Pine North 45 degrees West a distance of 61.95 feet.

CERTIFICATE OF LOCATION OF GOVERNMENT CORNER

East Quarter corner, Section 12, Township 141 North,
Range 28 West, Cass County, Minnesota

G - 25

1979 Government Resurvey Plat "E-71" on file in the Cass County Recorder's Office, shows a survey by Milo Stefan. The notes indicate the same information from the 1978 survey.

1991 on June 25 and August 23, a Landecker & Associates of Walker, Inc. survey crew found concrete monument in good shape along with the 1978 United States Forest Service bearing trees, the 1918 General Land Office bearing tree (in error by 1 chain).

1991 on November 21, Landecker & Associates of Walker, Inc. personnel along with United States Forest Service personnel, find the iron pin set in 1914 along with the 1914 tie: 12 inch Norway Pine South 83 degrees East a distance of 162 feet and 1917 tie: 16 inch White Pine North 76 degrees East a distance of 114.3 feet. This iron post is accepted as a perpetuation of the original corner position.

1993 on May 3, a Landecker & Associates of Walker, Inc. survey crew set a 2 inch by 24 inch iron monument with brass cap in place of the 7/8 inch square by 20 inch long pin set by Middleton in 1914 perpetuating said original corner. It was determined the General Land Office corner set proportionally in 1918 was not the true corner, therefore, the United States Forest Service crew removed the concrete monument that they had set perpetuating said General Land Office corner position. New bearing trees were marked and a steel sign post set as noted on front of this certificate, monumenting the true corner position.

347442

OFFICE OF COUNTY RECORDER

State of Minnesota, County of Cass
I hereby certify that the within instrument
was filed in this office for record on the

21ST day of MAY A.D. 1993

at 2:30 O'clock P M and was duly

recorded as Micro Doc. No. 347442

Claudia Kayser

N.S. COUNTY RECORDER