

CERTIFICATE OF LOCATION OF GOVERNMENT CORNER

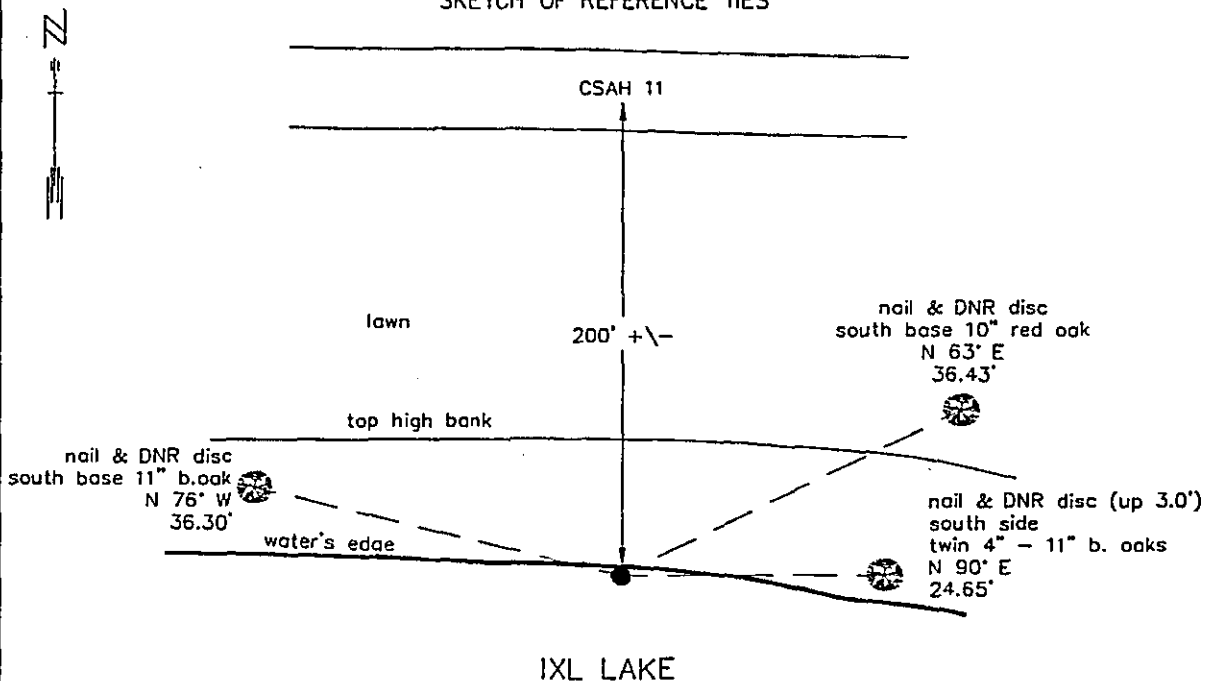
MEANDER CORNER #43 of Section 22, Township 140, Range 29, 5th P.M.

STATE OF MINNESOTA, County of CASS

At the corner location shown on the sketch:

- On 7-8-91 found a 2" BENT IRON PIPE (2.1' ABOVE WATER)
DATE
- left monument as found, lowered monument, removed monument (explain)
- On _____ Placed a _____
DATE

SKETCH OF REFERENCE TIES



NOTE:
monument is 0.9' south of water's edge
and toe of 10' high lake bank.

bearings observed with a compass

Statement of evidence relative to this corner location is on back of page. 8-23-91
WMA 00355

343676

I hereby certify that this document and the data contained herein was prepared by me or under my direct supervision.

John D. Walker 3-26-92
SIGNATURE DATE

Registration No. 16098

- Land Surveyor, Professional Engineer
- County Surveyor, County Engineer

OFFICE OF THE COUNTY RECORDER
County of Cass

I hereby certify that this document was filed in the Co. recorders office at 3:20 P.M. on the 10 day of December A.D., 1992

County Recorder Cladine Keyler
By mj, Deputy

DOCUMENT NO. 343676

Meander Corner No. 43, Section 22, Township 140 North, Range 29 West

The DNR Bureau of Engineering contacted the following for survey information:

Minnesota Secretary of State's Office
Cass County Surveyor's Office
Gary Stevenson, RLS, Walker, MN
Walt Curo, RLS, Hackensack, MN
Roger Mustonen, RLS, Hackensack, MN

- 1870 This corner was established by the U.S. General Land Office marked with a post and witnessed by the following bearing trees:
W. Birch, 4" North 38° West, 40 links (26.4')
No other ties convenient.
- 1923 June, the plat of MINNE-TEEPE PORTAGE as surveyed by John M. Greene and recorded as document "D-99" shows an iron monument on the north shore of IXL Lake, but no designation of meander corner is given.
- 1981 County Surveyor, G. H. Stevenson, found an iron pipe per the plat of MINNE-TEEPE PORTAGE.
- 1982 August, A field crew of the Department of Natural Resources, Bureau of Engineering found a leaning, 1-3/4" iron pipe with a hex nut on top. It was found 3 feet south of the toe of the lake bank in 1 foot of water with 2.1 feet above the water surface, 16 feet south and in line with a fence north. No other evidence of the corner was found.
- 1991 The iron pipe is accepted as the Meander Corner and ties were taken as shown on the face of this certificate.