

CERTIFICATE OF LOCATION OF GOVERNMENT CORNER

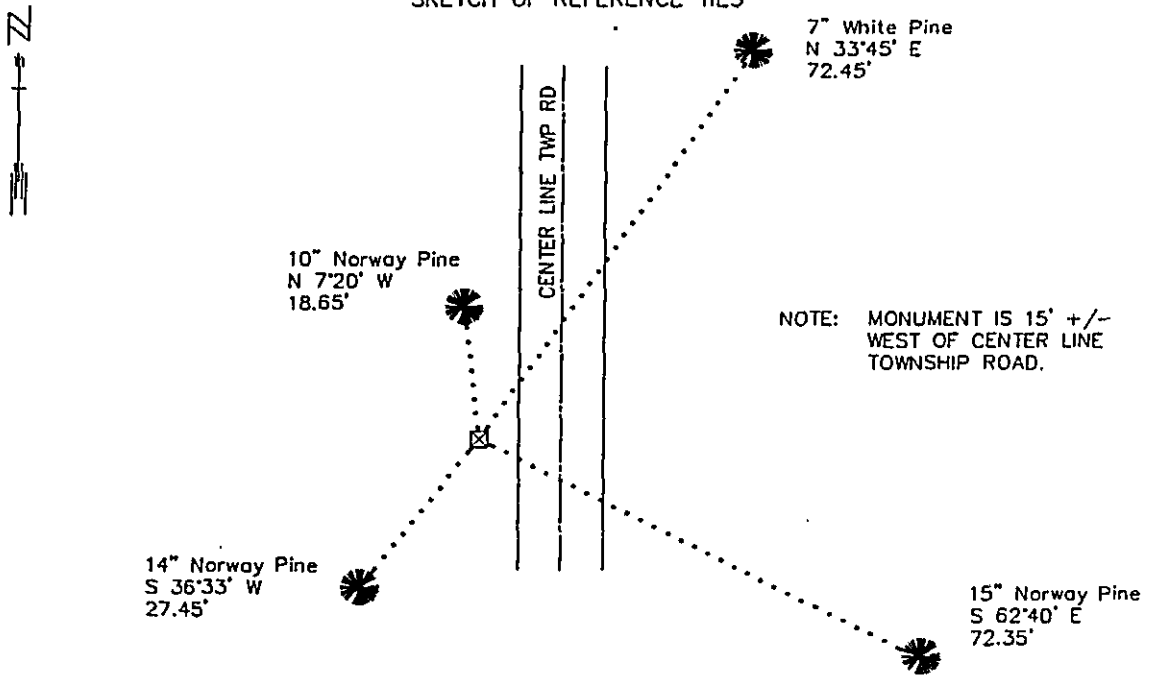
NORTHEAST Corner of Section 28, Township 140 N, Range 26 W, 5th P.M.

STATE OF MINNESOTA, County of CASS

At the corner location shown on the sketch:

- On 12/7/83 found a 3" X 3" concrete monument with top (up 0.8'). 1942 ties were in place and
DATE they all checked.
- left monument as found, lowered monument, removed monument (explain)
- On Placed a
DATE

SKETCH OF REFERENCE TIES



NOT TO SCALE
BEARINGS OBSERVED WITH A COMPASS

Statement of evidence relative to this corner location is on back of page.

DATE 10\29\92
FILE SFT00031

I hereby certify that this document and the data contained herein was prepared by me or under my direct supervision.

John D. Walker 12-3-92
SIGNATURE DATE

Registration No. 16098

- Land Surveyor, Professional Engineer
- County Surveyor, County Engineer

OFFICE OF THE COUNTY RECORDER

County of Cass

I hereby certify that this document was filed in the Co. recorders office at 2:45 P. M. on the 10 day of December A.D., 1992
 County Recorder Claudine Kayler
 By ms Deputy

DOCUMENT NO. 343669

Northeast Corner Section 28, Township 140 North, Range 26 West

The following offices were contacted for information on this corner:

Minnesota Secretary of State
Minnesota Department of Transportation
Cass County Surveyor
Wallace F. Buckler, RLS
Gary Stevenson & Associates
AMI Surveyors & Mappers
Widseth, Smith, Nolting, & Associates
Walt Curo Surveying

1871 This corner was originally established by the U.S. General Land Office survey. The government notes show the corner marked with a post and witnessed by the following bearing trees:

14" Norway Pine, N. 47° E., 10 links (6.60')
16" Norway Pine, S. 52° E., 16 links (10.56')
16" Norway Pine, S. 24° W., 31 links (20.46')

1923 Information on microfilm (Roll 125, Book 151, Pgs. 81-98) in the Cass County Surveyor's office shows that John Greene found stumps of old B.T.'s and took new ties:

8" Norway Pine, N. 12° W., 19.0'
6" White Pine, N. 35° E., 25.7'
4" White Pine, S. 85° E., 14.2'
9" Norway Pine, S. 30° W., 27.5'

The following information is from the Cass County Land Record sheet:

1942, Book "D", Page 314, John Curo took ties to a 3x3 concrete post at the corner:

7" White Pine, N. 33°45' E., 72.45'
15" Norway Pine, S. 62°40' E., 72.35'
14" Norway Pine, S. 36°33' W., 27.45'
10" Norway Pine, N. 7°20' W., 18.65'

1950, Book "D", Page 359, Harold Curo found a 4x4 concrete post.

1949 Plat of Subdivision in Section 27 by Dean Anderson shows monument in place with a distance of 2659.4' to the quarter corner south.

1971 A section subdivision by R.F. Schneider shows a 3"x3" concrete with disc at the corner with a distance of 2655.8' to the quarter corner south.

1983 The DNR Bureau of Engineering found a 3"x3" concrete monument. All 1942 ties were in place and checked out. A distance of 2655.05' was measured to the quarter corner south. The concrete monument was accepted as marking the section corner position.

For information regarding this survey, contact the MN Department of Natural Resources, Bureau of Engineering, Survey Section, 500 Lafayette Road, St. Paul, MN 55155-4029