

CERTIFICATE OF LOCATION OF GOVERNMENT CORNER

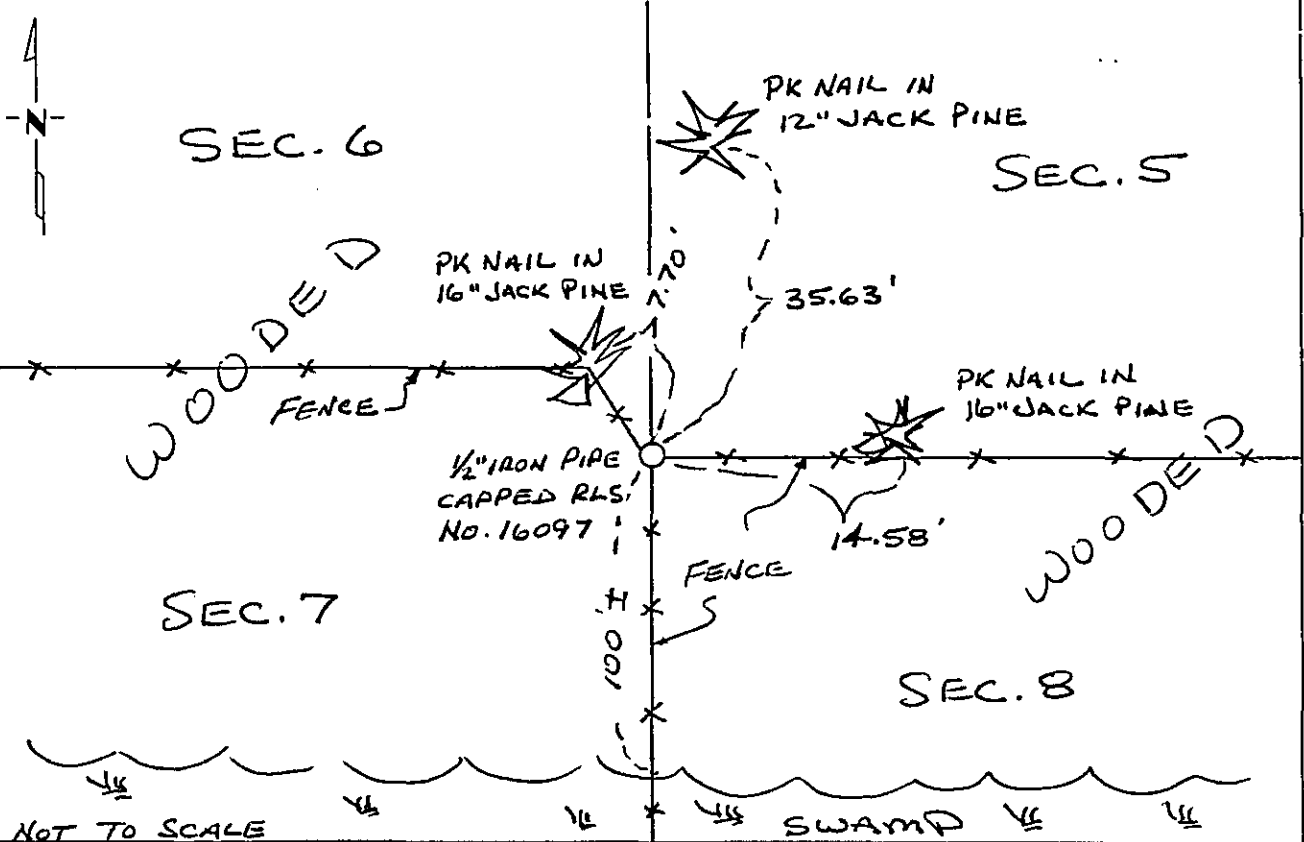
Northeast Corner of Section 7, Township 134, Range 32, 5th P.M.

STATE OF MINNESOTA, County of Cass

At the corner location shown on the sketch:

- On _____ found a _____
DATE
- left monument as found, lowered monument, removed monument (explain)
- On 12-24-91 placed a 1/2" iron pipe monument capped RLS No. 16097
DATE

SKETCH OF REFERENCE TIES



Statement of evidence relative to this corner location is on back of page. 343241

I hereby certify that this document and the data contained herein was prepared by me or under my direct supervision

[Signature] Nov. 16, 1992
SIGNATURE DATE

Registration No. 16097

- Land Surveyor, Professional Engineer
- County Surveyor, County Engineer

OFFICE OF THE COUNTY RECORDER

County of Cass

I hereby certify that this document was filed in the Co. Recorders office at 2:55 P.M. on the 24 day of November A.D., 19 92

County Recorder Cherline Keyler

By [Signature], Deputy

DOCUMENT NO. 343241

Statement of Evidence:

The Northeast Corner of Section 7, Township 134, Range 32, 5th Principal Meridian, Cass County, Minnesota, was set under the Public Land Survey, in 1870, as a post with 2 bearing trees. No evidence of the post or bearing trees was found.

A search of County Records revealed no additional data.

In 1991 and 1992, while subdividing Section 7, Thomas P. Thiessen, RLS No. 16097, found an intersection of a east-west and north-south fence line at the position for the Northeast Corner of Section 7. A check of distances north, south, east and west fits well. On Dec. 24, 1991, a 1/2 inch iron pipe capped RLS No. 16097, was placed at the fence lines intersection and is accepted as the position for the Northeast Corner of Section 7.