

# CERTIFICATE OF LOCATION OF GOVERNMENT CORNER

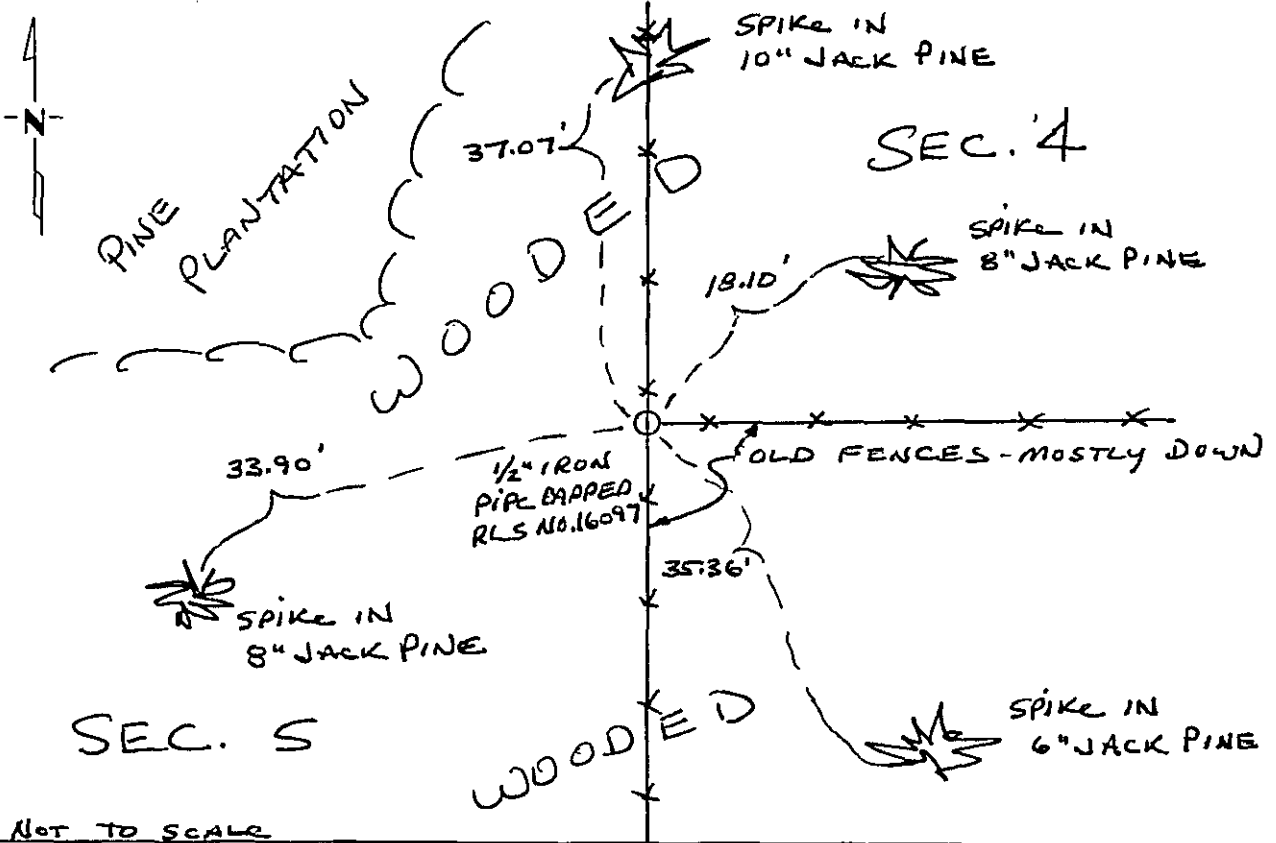
East Quarter Corner of Section 5, Township 134, Range 32, 5th P.M.

STATE OF MINNESOTA, County of Cass

At the corner location shown on the sketch:

- On \_\_\_\_\_ found a \_\_\_\_\_  
DATE
- left monument as found,  lowered monument,  removed monument (explain)
- On 12-24-91 placed a 1/2" iron pipe monument capped RLS No. 16097  
DATE

SKETCH OF REFERENCE TIES



NOT TO SCALE

Statement of evidence relative to this corner location is on back of page. 343234

I hereby certify that this document and the data contained herein was prepared by me or under my direct supervision

[Signature]  
SIGNATURE  
Nov. 16, 1992  
DATE

Registration No. 16097  
 Land Surveyor,  Professional Engineer  
 County Surveyor,  County Engineer

OFFICE OF THE COUNTY RECORDER  
County of Cass

I hereby certify that this document was filed in the Co. Recorders office at 2:20 P.M. on the 24 day of November A.D., 1992

County Recorder Claudia Kogler  
By M), Deputy  
DOCUMENT NO. 343234

Statement of Evidence:

The East Quarter Corner of Section 5, Township 134, Range 32, 5th Principal Meridian, Cass County, Minnesota, was set in 1870, under the Public Land Survey as a post with 2 bearing trees. No evidence of the Post or bearing trees was found.

A search of County records revealed no additional data.

In 1991 and 1992, while subdividing Section 5, Thomas P. Thiessen, RLS No. 16097, found an intersection of a north-south fence line with a fence line east at the position for the East Quarter Corner of Section 5. A check of distances west and south fits well, and on Dec. 12, 1991, a 1/2 inch iron pipe capped RLS No. 16097, was placed at the fence lines intersection and is accepted as the position for the East Quarter Corner of Section 5.