

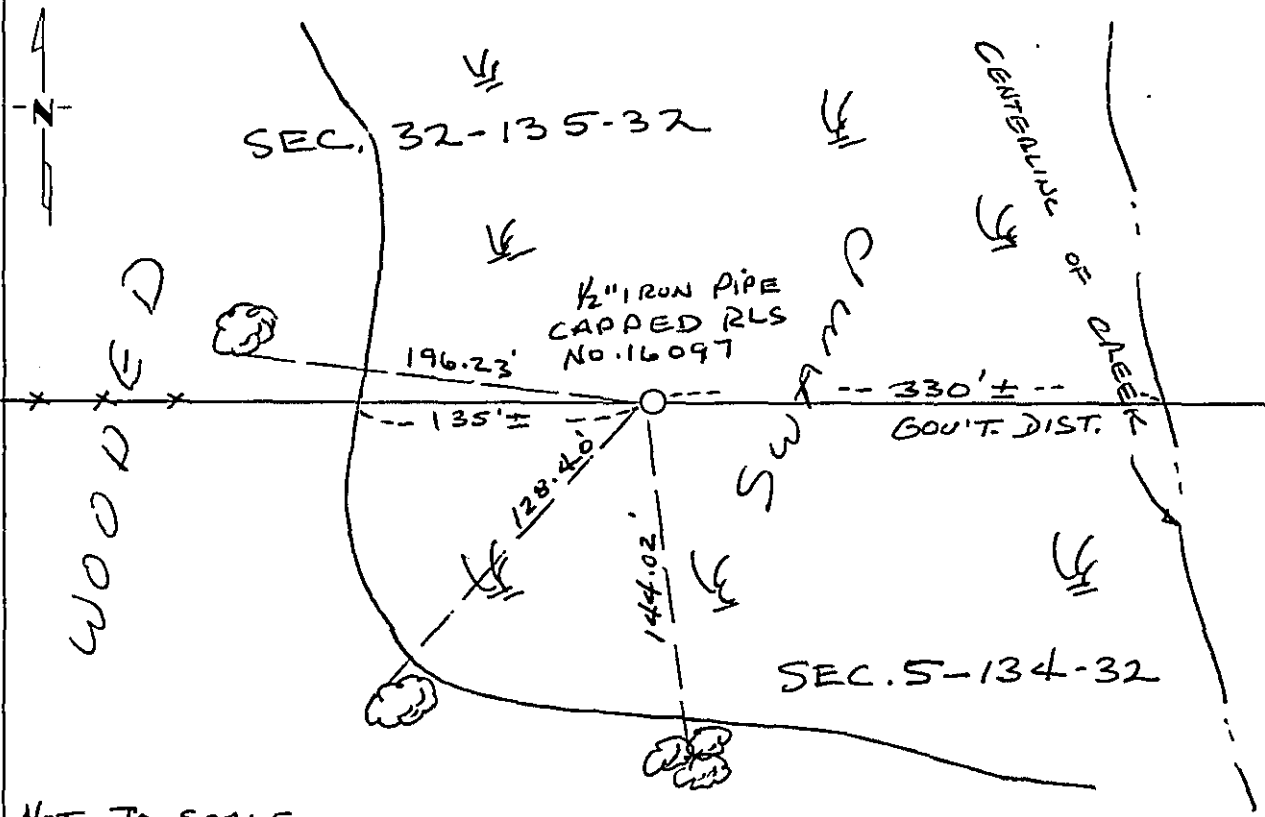
CERTIFICATE OF LOCATION OF GOVERNMENT CORNER

North Quarter Corner of Section 5, Township 134, Range 32, 5th P.M.
STATE OF MINNESOTA, County of Cass

At the corner location shown on the sketch:

- On _____ found a _____
DATE _____
 left monument as found, lowered monument, removed monument (explain)
- On 10-12-91 placed a 1/2" iron pipe monument capped RLS No. 16097
DATE _____

SKETCH OF REFERENCE TIES



NOT TO SCALE

Statement of evidence relative to this corner location is on back of page. 343233

I hereby certify that this document and the data contained herein was prepared by me or under my direct supervision.

[Signature]
SIGNATURE
Nov. 16, 1992
DATE

Registration No. 16097
 Land Surveyor, Professional Engineer
 County Surveyor, County Engineer

OFFICE OF THE COUNTY RECORDER
County of Cass

I hereby certify that this document was filed in the Co. Recorders office at 2:15 P.M. on the 24 day of November A.D., 1992

County Recorder Clenden Kayler
By mj, Deputy
DOCUMENT NO. 343233

Statement of Evidence:

The North Quarter Corner of Section 5, Township 134, Range 32, 5th Principal Meridian, Cass County, Minnesota was set in 1858, under the Public Land Survey as a post with 2 bearing trees. No evidence of the post or bearing trees was found.

A search of County records revealed no additional data.

In 1991 and 1992, while subdividing Section 5, Thomas P. Thiessen, RLS No. 16097, searched the area of the North Quarter Corner of Section 5 and found a fence to the west and the centerline of a creek to the east. The fence line was extended east into the swamp to a position 330 feet (5 chains) west from the centerline of the creek being the swamp call distance in the Government Notes. This position fits well with measured distance to the east and west. On Oct. 12, 1991, a 1/2 inch iron pipe capped RLS No. 16097 was placed and is accepted as the position for the North Quarter Corner of Section 5.