

CERTIFICATE OF LOCATION OF GOVERNMENT CORNER

East Quarter _____ Corner of Section 11, Township 141, Range 28, 5th P.M.

STATE OF MINNESOTA, County of Cass

At the corner location shown on the sketch:

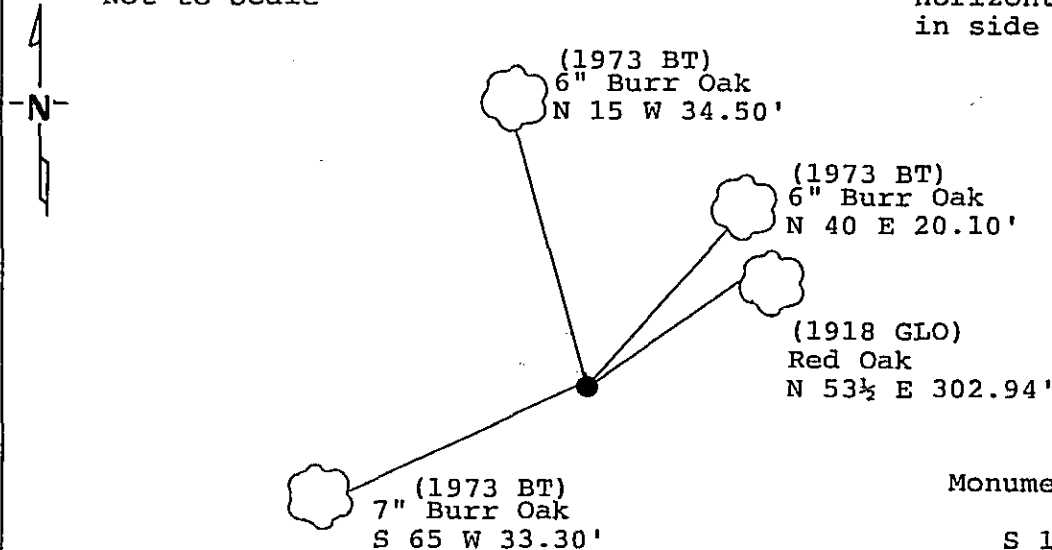
On 10/28/91 found a 1 inch iron pipe with brass cap up 12 inches
DATE

left monument as found, lowered monument, removed monument (explain)

On _____ placed a _____
DATE

Magnetic Decl: 5° East SKETCH OF REFERENCE TIES
 Not to Scale

All distances are horizontal to nail in side of tree



Monument Stamped
 $\frac{1}{4}$
 S 11 | S 12
 1918

Monument is located
 13'± easterly and 16'±
 northerly of North Country Trail.
 8' Steel sign post North 3.3'
 8' Steel sign post East 2.2'

All bearing trees are scribed, painted with red enamel and marked with a 54-3 (bearing tree) tag.

334680

Statement of evidence relative to this corner location is on back of page.

I hereby certify that this document and the data contained herein was prepared by me or under my direct supervision.

Alvin S. Indaba 2/10/92
SIGNATURE DATE

Registration No. 17008

- Land Surveyor, Professional Engineer
 County Surveyor, County Engineer

OFFICE OF THE REGISTER OF DEEDS

County of Cass

I hereby certify that this document was filed in the Reg. of Deeds office at 3:30 P. .M. on the 13 day of January A.D., 1992

Register of Deeds *Claudine K...*
 By *(initials)*, Deputy

DOCUMENT NO. 334680

East Quarter corner, Section 11, Township 141
North, Range 28 West, Cass County, Minnesota

G - 21

1874 P.H. Conger, U.S. Deputy Surveyor, originally established this corner position while subdividing Township 141 North, Range 28 West. The notes indicate a wood post was set to mark the corner position and the following witnesses: a 30 inch White Pine North 35 degrees West a distance of 75 links; and a 24 inch White Pine North 24 degrees East a distance of 47 links.

1918 General Land Office survey, filed at the Secretary of State, shows that they found no original evidence of the corner. They set a 1 inch by 36 inch iron pipe with brass cap at the proportional position and marked the following bearing trees: a 14 inch Red Oak North 53 and 1/2 degrees East a distance of 459 links; and a 20 inch Black Oak North 12 degrees West a distance of 399 links.

1973 United States Forest Service records in Book 3, page 55 of Township 141 North, Range 28 West, show that Survey Technician James Ekstrom found the iron pipe with brass cap in good condition. The notes indicate that he set a steel sign post North 4.0 feet and marked the following bearing trees: a 5 inch White Oak North 40 degrees East a distance of 20.1 feet; a 5 inch White Oak North 15 degrees West a distance of 34.5 feet; and a 6 inch White Oak South 65 degrees West a distance of 33.3 feet.

1981 Walter E. Curo, Registered Land Surveyor #11395, found the General Land Office brass cap monument, the Northeast 1918 bearing tree and the 1973 United States Forest Service bearing trees. He filed a Certificate of Location of Government Corner, document #260873.

1991 on October 28, a Landecker & Associates of Walker, Inc., survey crew found a 1 inch iron pipe with brass cap up 12 inches and the 1918 General Land Office Red Oak North 53 1/2 degrees East a distance of 459 links. They also found the 1973 United States Forest Service bearing trees as shown and steel sign posts were set as noted on front of this certificate. Landecker & Associates of Walker, Inc., accepts the corner as set by the 1918 General Land Office resurvey.