

CERTIFICATE OF LOCATION OF GOVERNMENT CORNER

Northeast Corner of Section 22, Township 140, Range 27, 5th P.M.

STATE OF MINNESOTA, County of Cass

At the corner location shown on the sketch:

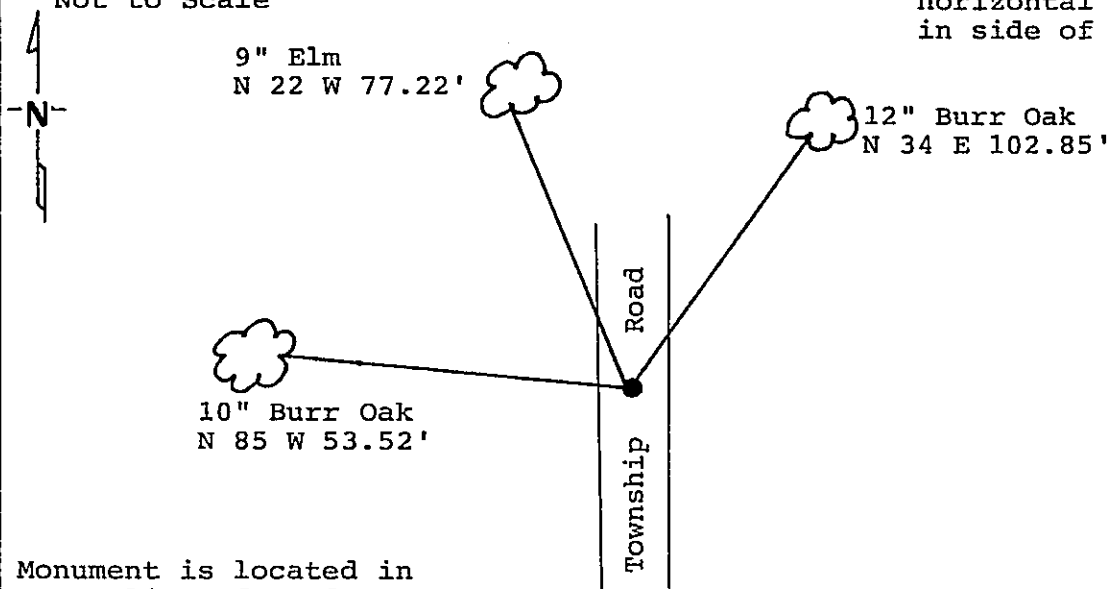
On 4/18/91 found a 2" iron pipe down 27" in centerline of township road.

left monument as found, lowered monument, removed monument (explain)

On 5/20/91 placed a 1/2 inch iron pipe on top of found 2" iron pipe.

Magnetic Decl: 5° East SKETCH OF REFERENCE TIES
Not to Scale

All distances are horizontal to nail in side of tree



Monument is located in centerline of road

8' steel sign post with Land Survey Monument sign 20.2 feet westerly.

Statement of evidence relative to this corner location is on back of page. 329231

I hereby certify that this document and the data contained herein was prepared by me or under my direct supervision.

Wm. J. Loder SIGNATURE 6/10/91 DATE

Registration No. 17008

- Land Surveyor, Professional Engineer
 County Surveyor, County Engineer

OFFICE OF THE REGISTER OF DEEDS
County of Cass

I hereby certify that this document was filed in the Reg. of Deeds office at 4:20 P -M. on the 11 day of June A.D., 1991

Register of Deeds Clairine Kayler

By KL, Deputy

DOCUMENT NO. 329231

Northeast corner, Section 22, Township 140 North,
Range 27 West, Cass County, Minnesota

N - 17

1873 Fendall G. Winston, U.S. Deputy Surveyor, originally established this corner position while subdividing Township 140 North, Range 27 West. The notes indicate a wood post was set and the following bearing trees were marked: a 6 inch Poplar South 21 degrees 30 minutes East a distance of 53 links; 1 6 inch Poplar North 46 degrees East a distance of 33 links; a 12 inch White Pine South 76 degrees 30 minutes West a distance of 26 links; and a 6 inch Maple North 60 degrees 45 minutes West a distance of 32 links.

1909 County Surveyor's Record Book "A", pages 308-312 show a survey by John Curo. The notes indicate that a 4 inch by 4 inch by 36 inch stake from old government bearing trees was set. The following bearing tree distances and bearing were changed to: Maple North 59 degrees 07 seconds West a distance of 21.42 feet; old White Pine stump South 78 degrees 46 minutes West a distance of 17.16 feet; and a Poplar South 21 degrees 30 minutes East a distance of 35.28 feet. In 1911 he set a 2 and 1/2 inch by 48 inch iron pipe in concrete.

1910 County Surveyor's Notes on microfilm roll 10 S, Book 48, page 37 and microfilm roll 11 S, Book 91, page 4 show the following. John Curo ran to true corner from east.

1911 County Surveyor's Notes on microfilm roll 11 S, Book 93, page 9 show the following. Harry Todd found the corner as set by Curo.

1938 Civilian Conservation Corps notes from Washburn Lake, Book 5, page 68 show the following: random line at 5344 feet from east, center of road 44 feet north of East-West fence. Book 6, page 73, shows the following: start west from approximate corner in road.

1991 on May 20, a Landecker & Associates of Walker, Inc. survey crew found a 2 inch iron pipe down 27 inches in centerline of township road as set by Curo in 1911. They set a 1/2 inch iron pipe near the road surface over the found 2 inch iron pipe. New bearing trees were marked as shown and a steel sign post set as noted on front of this certificate. Landecker & Associates of Walker, Inc. accepts the found iron pipe as a perpetuation of the original corner position.