

CERTIFICATE OF LOCATION OF GOVERNMENT CORNER

East Quarter _____ Corner of Section 28, Township 140, Range 27, 5th P.M.

STATE OF MINNESOTA, County of Cass

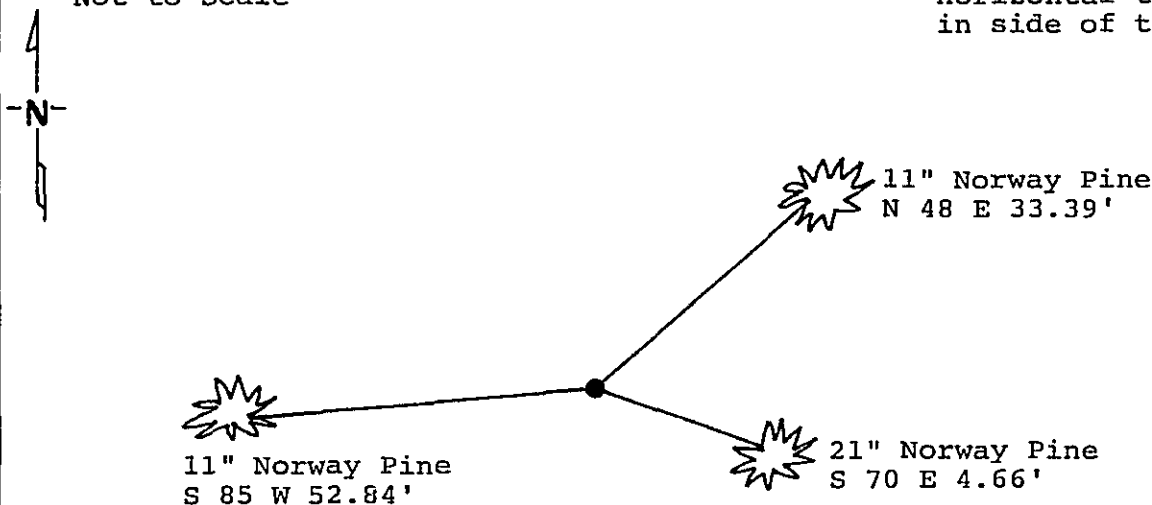
At the corner location shown on the sketch:

- On _____ found a _____
DATE
- left monument as found, lowered monument, removed monument (Explain)
- On 5/7/91 placed a 2" square tubular steel monument 36" long
DATE with aluminum cap, up 10".

Magnetic Decl: 5° East
Not to Scale

SKETCH OF REFERENCE TIES

All distances are horizontal to nail in side of tree



Monument is located 115'± east-southeast of woods trail at edge of stand of Jack Pine.

Monument Stamped
T140N R27W
S28 $\frac{1}{2}$ S27
1991
RLS 17008

8' steel sign post with land survey monument sign 2.15' westerly.

Statement of evidence relative to this corner location is on back of page. 329223

I hereby certify that this document and the data contained herein was prepared by me or under my direct supervision.

David A. Loh 6/10/91
SIGNATURE DATE

Registration No. 17008

- Land Surveyor, Professional Engineer
- County Surveyor, County Engineer

OFFICE OF THE REGISTER OF DEEDS

County of Cass

I hereby certify that this document was filed in the Reg. of Deeds office at 3:40 P. on the 11 day of June A.D., 1991

Register of Deeds *Clonidine Koyler*
By *ms*, Deputy

DOCUMENT NO. 329223

East Quarter corner, Section 28, Township 140 North,
Range 27 West, Cass County, Minnesota

T - 13

1873 Fendall G. Winston, U.S. Deputy Surveyor, originally established this corner position while subdividing Township 140 North, Range 27 West. The notes indicate a wood post was set and the following bearing trees were marked: a 6 inch White Pine North 46 degrees 45 minutes West a distance of 8 links; and a 10 inch Jack Pine South 50 degrees 45 minutes East a distance of 19 links.

1990 in November, a Landecker & Associates of Walker, Inc. survey crew searched for corner. On April 8, 1991, an additional corner search was made. No evidence was found at either search. On May 7, a Landecker and Associates of Walker, Inc. survey crew make final search for corner. Finding nothing, they set a 2 inch squared tubular monument 36 inches long with an aluminum cap up 10 inches at the single proportion position between the Northeast and Southeast corners of Section 28. New bearing trees were marked as shown and a steel sign post set as noted on front of this certificate.

NOTE: See subdivision map on Sheet 2 of 2 of STEVENS LAKE
HOMESITES plat of record.