

# CERTIFICATE OF LOCATION OF GOVERNMENT CORNER

East Quarter \_\_\_\_\_ Corner of Section 31, Township 142, Range 31, 5th P.M.

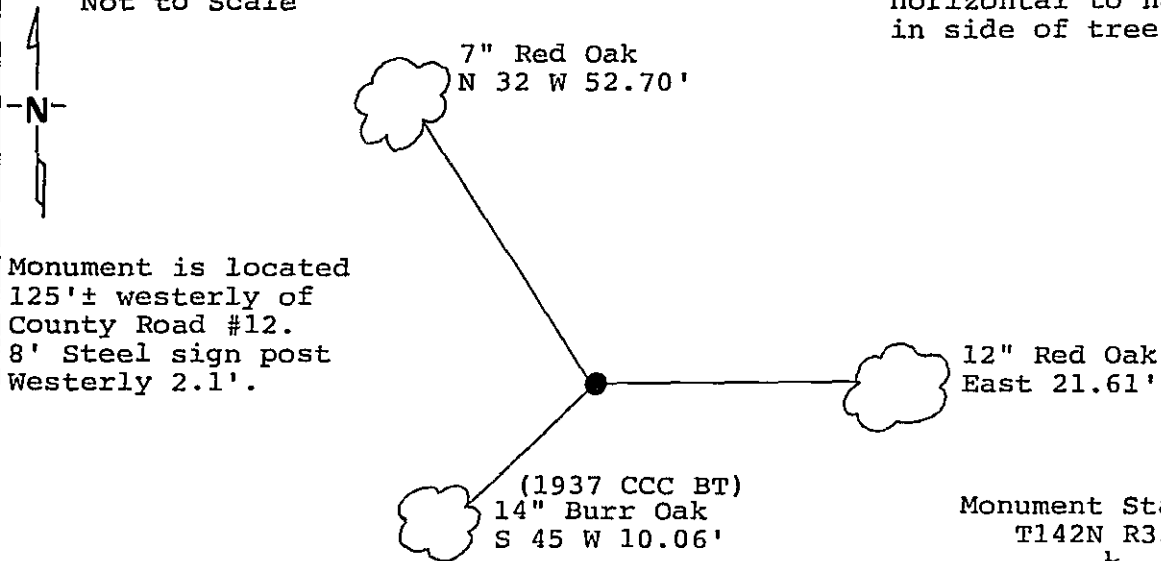
STATE OF MINNESOTA, County of Cass

At the corner location shown on the sketch:

- On 10/22/90 found a 1 and 1/2 inch iron pipe up 12 inches  
DATE
- left monument as found,  lowered monument,  removed monument (explain)
- On 1/28/91 placed a aluminum cap on 1 and 1/2 inch iron pipe  
DATE

Magnetic Decl: 5° East SKETCH OF REFERENCE TIES  
Not to Scale

All distances are horizontal to nail in side of tree



Monument is located  
125'± westerly of  
County Road #12.  
8' Steel sign post  
Westerly 2.1'.

Monument Stamped  
T142N R31W  
S31|S32  
1990  
RLS 17008

All trees are scribed, painted with red enamel and marked with a 54-3 (bearing tree) tag.

Statement of evidence relative to this corner location is on back of page. 327278

I hereby certify that this document and the data contained herein was prepared by me or under my direct supervision.

[Signature] 3/6/91  
SIGNATURE DATE

Registration No. 17008

- Land Surveyor,  Professional Engineer
- County Surveyor,  County Engineer

OFFICE OF THE REGISTER OF DEEDS

County of Cass

I hereby certify that this document was filed in the Reg. of Deeds office at 3:15 P. M. on the 11 day of March A.D., 19 91

Register of Deeds Claudia Kayla  
By ms, Deputy

DOCUMENT NO. 327278

East Quarter corner, Section 31, Township 142 North,  
Range 31 West, Cass County, Minnesota

X-5 142-31

1873 P.H. Conger, U.S. Deputy Surveyor, originally established this corner position while subdividing Township 142 North, Range 31 West. The notes indicate a wood post was set to mark the corner position and the following witnesses: a 3 inch Poplar North 79 degrees West a distance of 11 links; and a 3 inch Poplar South 56 degrees East a distance of 15 links.

1919 County Surveyor's Record Book "C", page 500, shows a survey by E.B. Horst. The notes indicate an iron monument was set. The notes do not indicate that any bearing trees were marked.

1919 County resurvey in County Recorder's Office file cabinet E number 62 shows survey by E.B. Horst. The notes indicate an iron monument was found.

1925 County resurvey in County Recorder's Office file cabinet E number 62 shows survey by John Greene. The notes indicate an iron monument was found.

1937 Civilian Conservation Corps, Carl Steadland, find 2 inch iron pipe in good condition. He places a metal location poster on a 7 inch Red Oak South 50 and 1/2 degrees West a distance of 15 links.

1990 on October 22, a Landecker & Associates, Inc. survey crew search for the County iron pipe. The notes indicate that they found a 1 and 1/2 inch iron pipe up 1 foot, 100 feet northerly of house and garage. No evidence of original bearing trees was found. Found 1937 location poster rusted on 14 inch Oak South 45 degrees West a distance of 10 feet.

1990 on December 27, a Landecker & Associates, Inc. survey crew traverse to Center Quarter corner and Center West One-Sixteenth corner of Section 32 to verify location of this corner.

1991 on January 28, a Landecker & Associates, Inc. survey crew set aluminum cap on the found 1 and 1/2 inch iron pipe 125 feet westerly of County Road Number 12. New bearing trees were marked as shown and a steel sign post set as noted on front of this certificate. Although the corner as found and perpetuated does not fit the computed location for a split between the Northeast and Southeast corners of Section 31, the distance to the north checks well with that of the 1925 Greene resurvey of Section 32, the distance and bearings to the Center West One-Sixteenth and Center Quarter corners of Section 32 check well and the monument does not appear to have been disturbed. Landecker & Associates, Inc., therefore, accepts the found 1 and 1/2 inch iron pipe as a perpetuation of the position as monumented by Greene in 1925 and used since that time.