

CERTIFICATE OF LOCATION OF GOVERNMENT CORNER

S 1/16 Corner of Section 27-28, Township 143, Range 25, 5th P.M.

STATE OF MINNESOTA, County of CASS

At the corner location shown on the sketch:

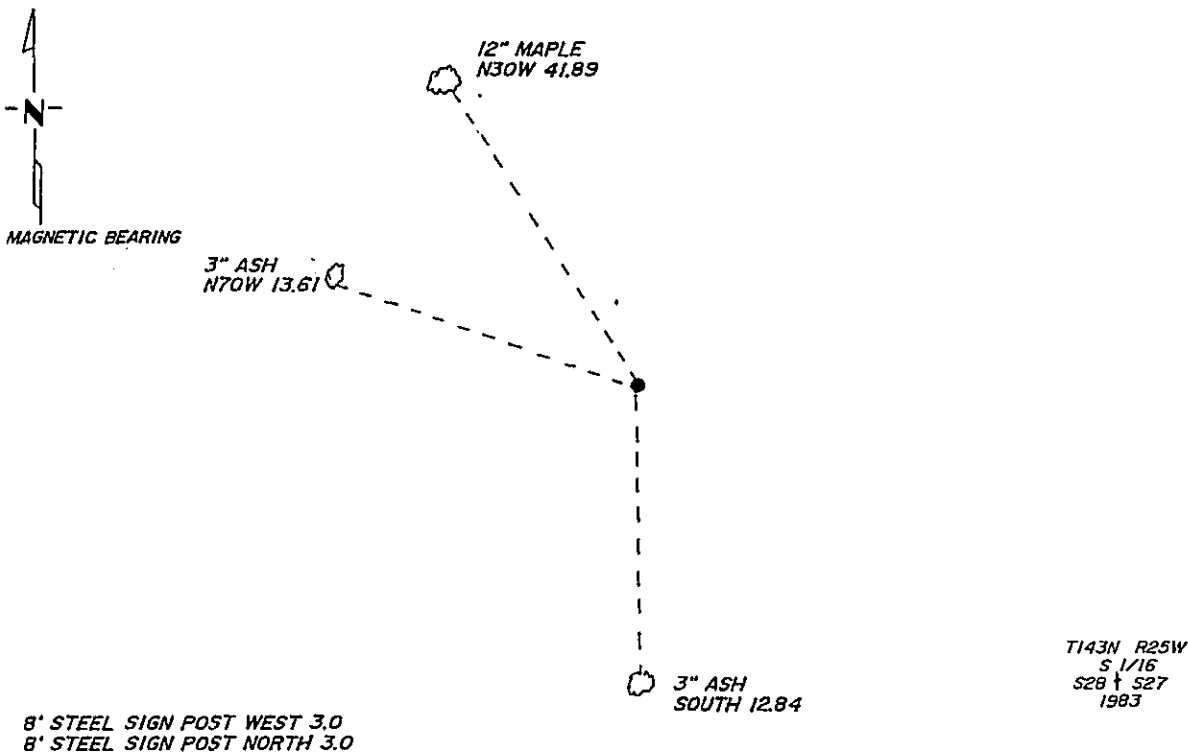
On 1989 found a 1/2" COPPERWELD ROD WITH BRONZE CAP
DATE

left monument as found, lowered monument, removed monument (explain)

On _____ placed a _____
DATE

NOT TO SCALE

SKETCH OF REFERENCE TIES



NOTE: ALL BT'S ARE BLAZED, SCRIBED AND PAINTED WITH RED ENAMEL PAINT WITH BT SIGNS, AND ALL MEASUREMENTS ARE HORIZONTAL TO SPIKE IN SIDE OF TREE

Statement of evidence relative to this corner location is on back of page. 326345

I hereby certify that this document and the data contained herein was prepared by me or under my direct supervision.

Walter E. Cass 1-22-91
SIGNATURE DATE

Registration No. 11395

- Land Surveyor
- County Surveyor

OFFICE OF THE COUNTY RECORDER

County of Cass

I hereby certify that this document was filed in the Co. Recorders office at 9:50 A. A.M. on the 25 day of January A.D., 19 91

County Recorder Claudine Kayler
By MS, Deputy

DOCUMENT NO. 326345

Statement of Evidence:

U-13 S 1/16 Cor. of Sec. 27-28, T. 143 N., R. 25 W.

1976 B.L.M. made a dependant resurvey of part of the township and found a 1" pipe of unknown origin and set a 2 1/2" x 28" alumnium pipe with cap in place of the 1" pipe for the northeast corner of sec. 28. From this point they go south on record bearing, the record distance and set a monument.

1979-1983 B.L.M. was made aware of a 1900 survey by the Corp. of engineers which gave a new position for the NE corner of the section. B.L.M. then made a corrective dependent resurvey and made a new determination of the section line. They moved the monument to a newly computed position on this line.

1989 The USFS used this monument as part of a traverse around section 28.

1990 Walt Curo accepts the B.L.M. monument for the corner as this position was monumented and accepted by B.L.M. as the true position for this corner.