

# CERTIFICATE OF LOCATION OF GOVERNMENT CORNER

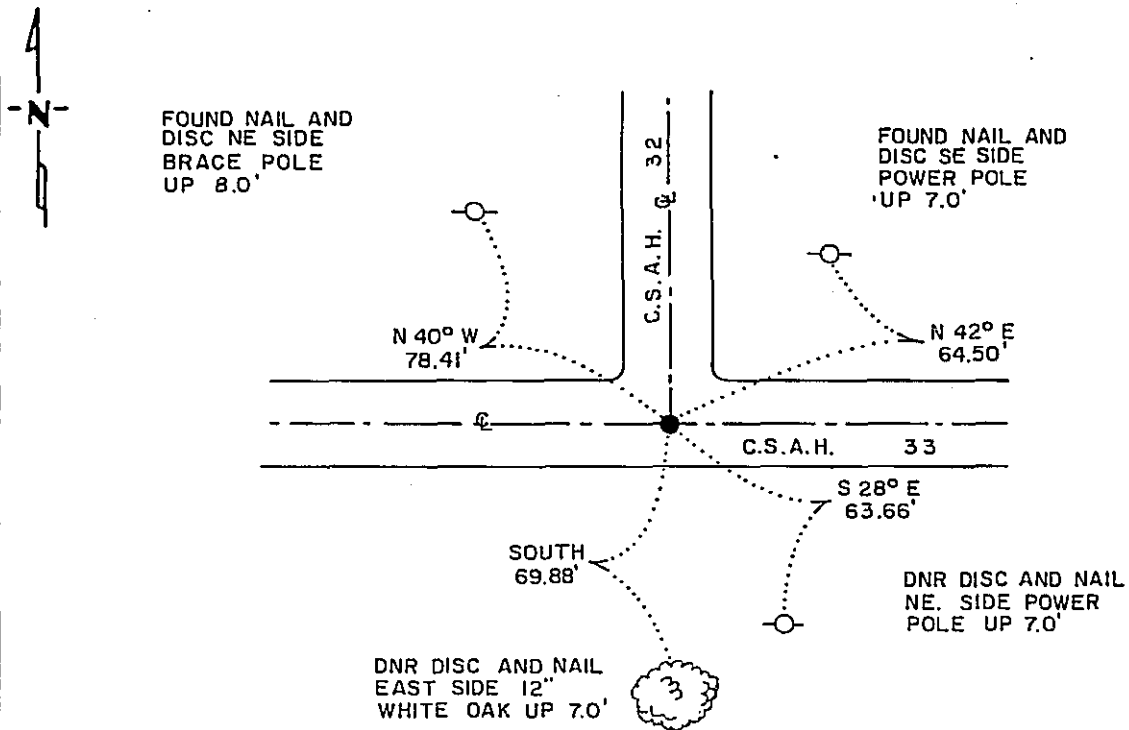
NORTH QUARTER Corner of Section 4, Township 133 N., Range 32 W., 5th P.M.

STATE OF MINNESOTA, County of CASS

At the corner location shown on the sketch:

- On 8/29/89 found a 1 1/4" O.D. IRON PIPE, FLUSH  
DATE
- left monument as found,  lowered monument,  removed monument (explain)
- On \_\_\_\_\_ placed a \_\_\_\_\_  
DATE

## SKETCH OF REFERENCE TIES



### BEARINGS OBSERVED WITH COMPASS

Statement of evidence relative to this corner location is on back of page.

DDS 10-27-89  
FILE: A-49196

I hereby certify that this document and the data contained herein was prepared by me or under my direct supervision.

John D. Walker 12-28-90  
SIGNATURE DATE

Registration No. 16098

- Land Surveyor,  Professional Engineer
- County Surveyor,  County Engineer

OFFICE OF THE COUNTY RECORDER  
 County of Cass

I hereby certify that this document was filed in the Co. Recorders office at 2:45 P. M. on the 2 day of January A.D., 19 91

County Recorder Clondine Kayler  
 By (M), Deputy

DOCUMENT NO. 325961

North Quarter Corner Section 4, Township 133 North, Range 32 West, 5th P.M.

The following offices were contacted for information on this corner:

Secretary of State  
Wadena County Highway Department  
Cass County Surveyor  
Cass County Highway Department  
Landecker and Associates, Inc., Pequot Lakes, MN  
Roy A. Smith and Associates, Inc., Detroit Lakes, MN  
Comstock and Davis, Little Falls, MN  
Richard Howe, Alexandria, MN

- 1858 This corner was established by the U.S. General Land Office and monumented with a post and witnessed by the following bearing trees:  
14" Y. Pine, North 66° West, 1.72 chains  
7" Y. Pine, South 73½° West, 1.65 chains
- 1980 April 14, a tie sheet from Landecker and Associates has a 1½" iron pipe found in centerline of blacktop county road and a gravel road north. Monument was left as found.
- 1987 May 11, a Cass County Land Record has a 1½" I.P. in centerline, centerline and ties.
- A highway right-of-way map from the Cass County Highway Department has a monument shown at the intersection of centerlines of east-west C.S.A.H. 33 and C.S.A.H. 32 north.
- No Date A highway right-of-way map from Wadena County Highway Department has a monument shown at the intersection of centerlines east-west C.S.A.H. 33 and C.S.A.H. 32 north.
- 1988 A worksheet by Roy A. Smith and Associates has an iron at centerline of roads east, west, north, and a distance west of 2643.27 feet to a PK nail found in centerline of roads east, west, and north at the northwest corner of Section 4.
- 1988 In August, the DNR Bureau of Engineering found a 1½" iron pipe in centerline of blacktop roads east, west, and north. Ties were found northeast and northwest which were agreeable to Mr. Landecker's 1980 ties. From said iron pipe, it is 2643.10 feet west to the northwest corner of Section 4 and 2622.23 feet east to the northeast corner of Section 4. The iron pipe was accepted as the quarter corner.

Traverse information is available from the DNR Bureau of Engineering.