

CERTIFICATE OF LOCATION OF GOVERNMENT CORNER

EAST QUARTER Corner of Section 7, Township 145, Range 31, 5 th P.M.

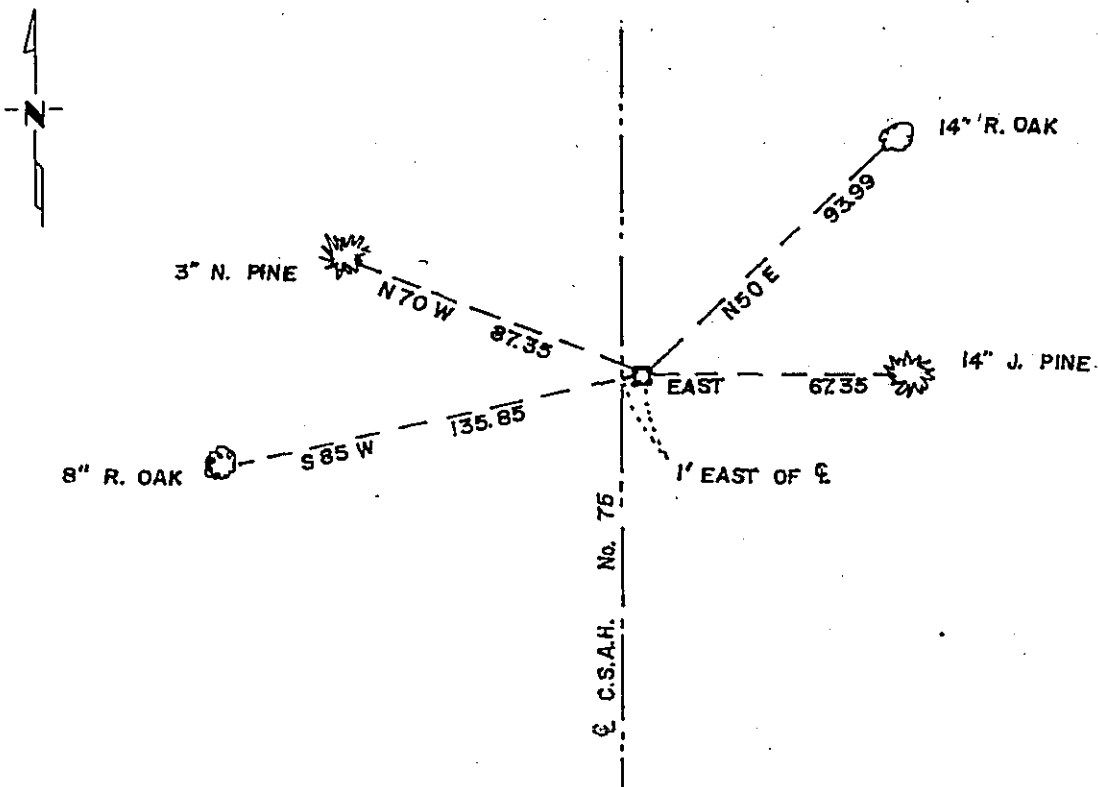
STATE OF MINNESOTA, County of CASS

At the corner location shown on the sketch:

- On 1988 found a 1-1/2" IRON PIPE IN CENTER OF CO. RD, WHICH WAS ^{DATE} DESTROYED BY ROAD CONSTRUCTION
 - left monument as found, lowered monument, removed monument (explain)
- On 8-28-90 placed a 2" x 2" x 6" TELESPAR MONUMENT WITH ALUMINUM ^{DATE} CAP FLUSH WITH BLACKTOP

NOT TO SCALE

SKETCH OF REFERENCE TIES



DIST. TO SPK. IN SIDE OF TREE

Statement of evidence relative to this corner location is on back of page.

325739

I hereby certify that this document and the data contained herein was prepared by me or under my direct supervision.

Walter E. Olson 12-20-90
SIGNATURE DATE

Registration No. 11395

- Land Surveyor
- County Surveyor

OFFICE OF THE COUNTY RECORDER

County of Cass

I hereby certify that this document was filed in the Co. Recorders office at 2:40 P.M. on the 21 day of December A.D., 1990

County Recorder Claudine Kayler
By MJ, Deputy

DOCUMENT NO. 325739

Statement of Evidence: G 5, E½ corner, SEc. 7, Twp. 145, Rge. 31

1875: Original survey set a wood post and marked BT's as follows:

J.Pine 6" S 25 W 290 lks.
J.Pine 5" N 21 E 20 lks.

1906: John Curo found both BT's and set stake. Recorded in Survey Record Book "A", pages 270-271. He marked BT's as follows:

J.Pine 8" N61°25'E 63.70 ft.
J.Pine 6" N69°52'W 44.10 ft.

1912: John Curo set new stake. Recorded in Survey Record Book "D", page 148. He found the NE BT and the stump of the NW BT marked new BT as follows: J.Pine 4" S37°30'E 70.30 ft.

1988: Cass county Hwy. Dept. survey crew found a 1½" iron pipe in place in blacktop. This monument destroyed in road construction.

1990: Walt Curo and Cass County Hwy. Dept. survey crew reset the corner with a 2" x 2" x 6" telespar monument with aluminum cap, flush with surface of blacktop. Marked new BT's as shown on front.