

# CERTIFICATE OF LOCATION OF GOVERNMENT CORNER

NORTHEAST Corner of Section 8, Township 144, Range 31, 5 th P.M.

STATE OF MINNESOTA, County of CASS

At the corner location shown on the sketch:

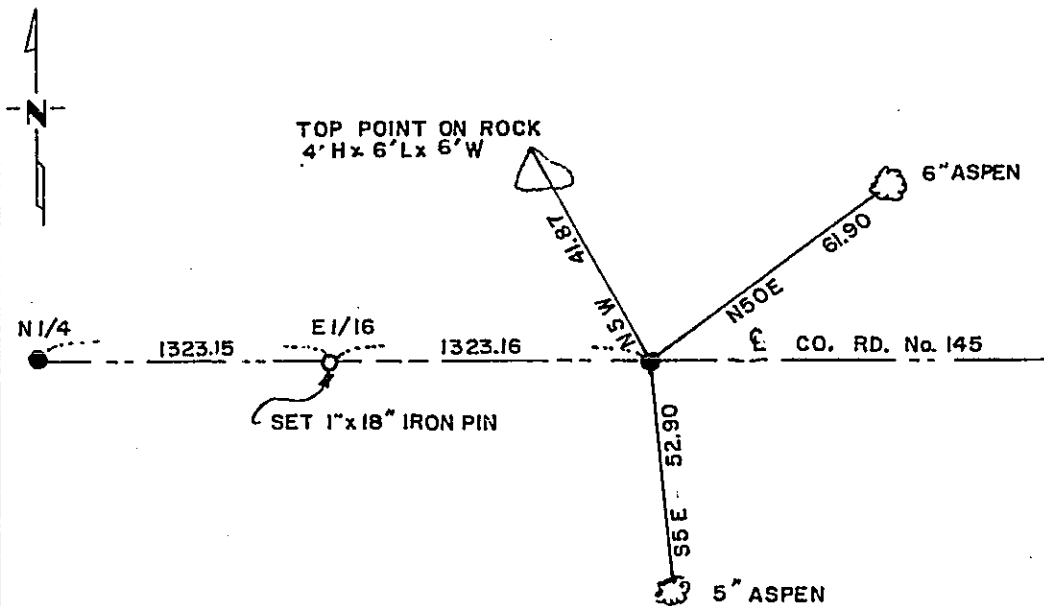
On 9-27-90 found a BENT 1/2" x 18" IRON PIPE  
DATE

left monument as found,  lowered monument,  removed monument (explain)

On 9-27-90 placed a 3/4" 18" IRON PIN IN PLACE OF BENT PIPE  
DATE

NOT TO SCALE

SKETCH OF REFERENCE TIES



DIST. TO SPK. IN SIDE OF TREE

Statement of evidence relative to this corner location is on back of page. 325738

I hereby certify that this document and the data contained herein was prepared by me or under my direct supervision.

Walter E. Olson 12-20-90  
SIGNATURE DATE

Registration No. 11395

- Land Surveyor
- County Surveyor

OFFICE OF THE COUNTY RECORDER  
County of Cass

I hereby certify that this document was filed in the Co. Recorders office at 2:35 P.M. on the 21 day of December A.D., 1990

County Recorder Claudine Kaylor  
By MJ, Deputy

DOCUMENT NO. 325738

Statement of Evidence: E 9, NE corner of Sec. 8, Twp. 144, Rge. 31

1875: Original survey set a wood post and marked BT's, as follows:

4" oak S 11 E 122 lks.  
7" W. pine S 17 W 226 lks.  
6" birch N 32 W 187 lks.  
6" w. pine N 52 E 17 lks.

1910 James Middleton found wood post and remains of original BT's.  
Recorded in County Survey Record Book "B", page 578.

1930: B.L.M. dependent resurvey found no evidence of this corner.  
They set a 6" diam. concrete monument 24" long, 20" into  
ground by proportionate measurement east and west and 50 lks.  
south of fence. Marked BT's as follows:

4" poplar S 16½ E 62 lks.  
4" poplar S 67 W 62½ lks.

1990: Walt Curo and Cass County Highway Dept. Survey crew  
find bent ½" x 18" iron pipe in centerline of the county  
road. Find no evidence of the B.L.M. concrete monument or  
of the fence. We measure west to the ¼ corner and this distance  
compares reasonably with the B.L.M. distance. Replace bent pipe  
with a 3/4" x 24" iron pin. Mark new BT's as shown on front.