

CERTIFICATE OF LOCATION OF GOVERNMENT CORNER

NORTH QUARTER Corner of Section 8, Township 144, Range 31, 5 th. P.M.

STATE OF MINNESOTA, County of CASS

At the corner location shown on the sketch:

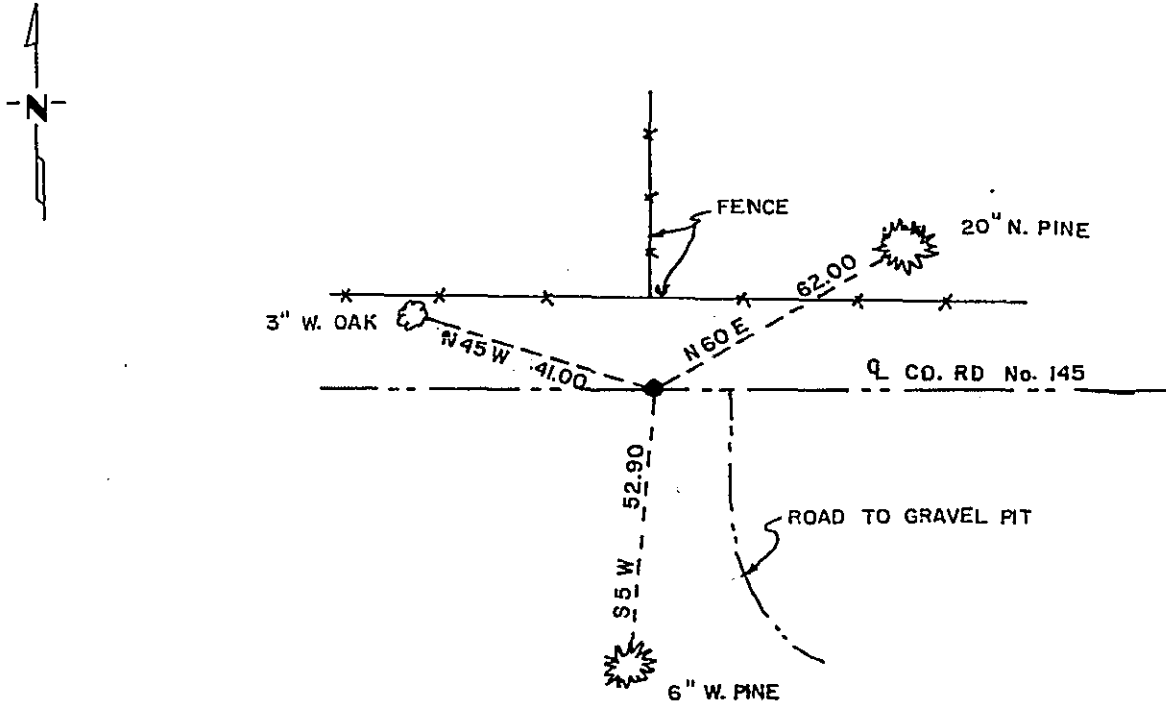
On 9-27-90 found a 1" X 36" BRASS CAP DOWN 2" IN C. CO. RD. No. 145
DATE

left monument as found, lowered monument, removed monument (explain)

On _____ placed a _____
DATE

NOT TO SCALE

SKETCH OF REFERENCE TIES



DIST. TO SPK. IN SIDE OF TREE

Statement of evidence relative to this corner location is on back of page. 325737

I hereby certify that this document and the data contained herein was prepared by me or under my direct supervision.

Walt E. Olson 12-20-90
SIGNATURE DATE

Registration No. 71395

- Land Surveyor
- County Surveyor

OFFICE OF THE COUNTY RECORDER

County of Cass

I hereby certify that this document was filed in the Co. Recorders office at 2:30 P.M. on the 21 day of December A.D., 19 90

County Recorder Claudia Kayler

By ms, Deputy

DOCUMENT NO. 325737

Statement of Evidence: E 7, N $\frac{1}{4}$ corner of Section 8, Twp. 144, Rge. 31

- 1875: Original survey set a wood post and marked BT's as follows: N. Pine N 15 E 38 Lks.
N. Pine S 17 E 42 Lks.
- 1930: B.L.M. dependent resurvey by Hal Craig U.S. Surveyor was shown corner by adjacent land owners. Point for corner is in centerline of east-west road and 50 lks south of fence corner of fences north, east and west. They set a 1" x 36" iron pipe with brass cap and marked BT's as follows: 9" N. pine N 61 $\frac{3}{4}$ E 89 lks.
12" N. pine S 24 E 227 lks.
- 1990: Walt Curo and Cass County Hwy. Dept. survey crew find brass cap in center of road 33 ft. south of fence corner. Find B.L.M. BT N 61 E 62.00 ft., now 20" N. pine. Mark new BT's as shown on front.