

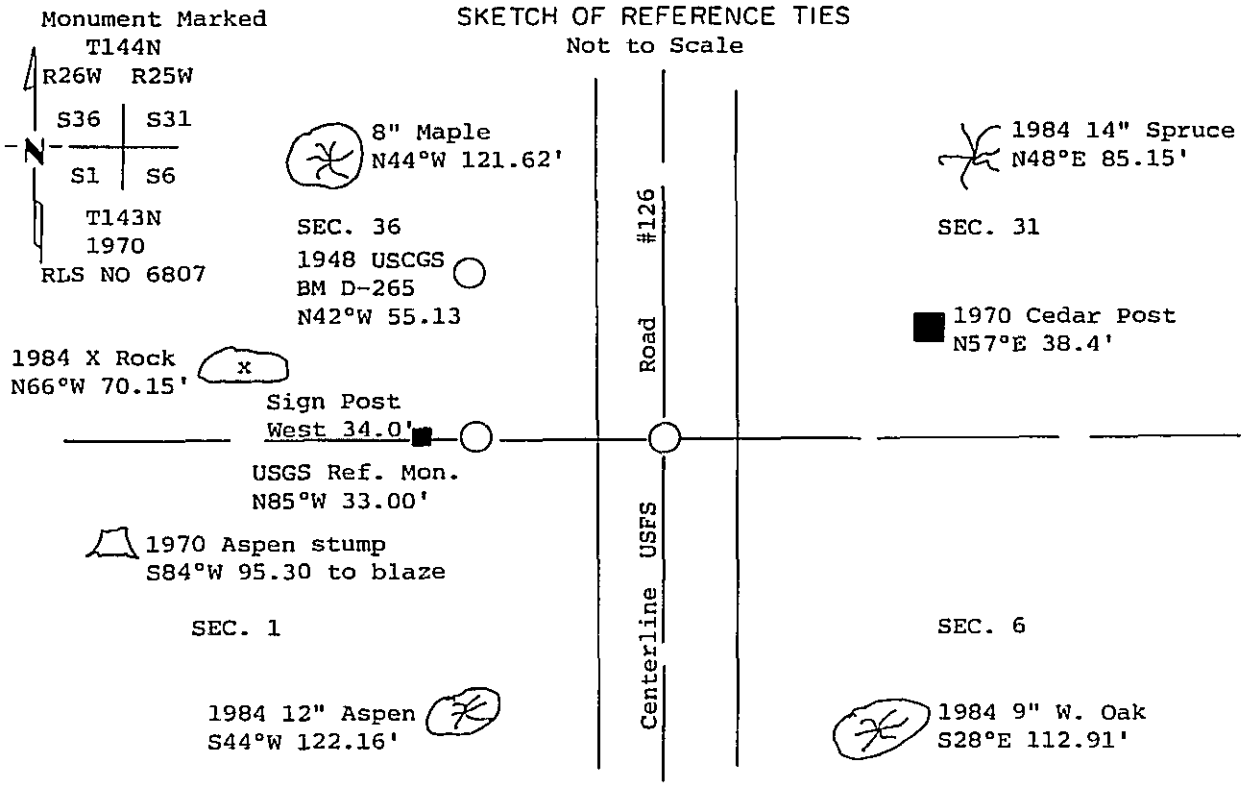
# CERTIFICATE OF LOCATION OF GOVERNMENT CORNER

Northeast Corner of Section 1, Township 143N, Range 26W, 5th P.M.

STATE OF MINNESOTA, County of Cass

At the corner location shown on the sketch:

- On 7-25-1990 found a 6" concrete monument with brass cap 6" below  
DATE  
surface of USFS road #126.
  - left monument as found,  lowered monument,  removed monument (explain)
- On \_\_\_\_\_ placed a \_\_\_\_\_  
DATE



Bearings are true. All trees are scribed, painted with a 30d spike and USFS 54-3 tag.

Statement of evidence relative to this corner location is on back of page. 325468

I hereby certify that this survey, plan or report was prepared by me or under my direct supervision and that I am a duly Registered Land Surveyor under the laws of the State of Minnesota.

William C. Osipow

Date 12/07/90 Registration No. 17767

OFFICE OF THE COUNTY RECORDER  
 County of Cass

I hereby certify that this document was filed in the Co. Recorder's office at 2:00 P.M. on the 10 day of December A.D., 19 90

County Recorder Clondine Kayler  
 By M.S., Deputy

DOCUMENT NO. 325468

**Statement of Evidence:**

Cor. 1,6.31 and 36 (NE Cor. Sec. 1)

- 1872 U.S. General Land Office survey set wood post for corner, the following references were noted:  
W. Pine 8° N 33° 30' E, 12 Links (7.92 feet)      W. Pine 10° S 48° E, 20 Links (13.20 feet)  
W. Pine 8° S 71° W, 23 Links (15.18 feet)      W. Pine 10° N 57° W, 21 Links (13.86 feet)
- 1914 John Curo, Cass County Surveyor, Book B, Page 413-417, found old 6" Township corner post and original BT's.
- 1932 N.F.Shaw, Engineer, CCC notes on file with USFS, state found a cedar post in good condition 30 inches above ground and placed a metal location poster on the following;  
Fence Post West, 0.50 chains (33.00 feet)
- 1953 R.W. Fassett, set a 2"x 2" temp. stake N 86° W, 57 links from true corner, for a witness corner and witnessed as follows:  
Coast and Geodetic Survey B.M. #D-265 N 1° E, 57 Links  
Aspen 6" N 80° W, 48 Links.      Aspen 6" S 42° W, 75 Links
- 10-8-1955 J. Ekstrom, USFS, dug in road 33' west of USGS poster on a very old post. No evidence found.
- 7-7-1970 W. Okerman, USFS, found remains of R.W. Fassett resurvey of 1953, as follow:  
2"x 2" hub (rotted)      Coast and Geodetic Survey B.M. #D-265  
Aspen stump N 80° W, 31.7 feet.      Stump hole S 42° W, 49.5 feet  
He set a 6"x 24" concrete monument with brass disk and witnesses as follows:  
White Spruce 8" N 44° E, 84.90 feet      White Oak 7" S 28° E, 113.10 feet  
Aspen 9" S 84° W, 95.60 feet      Cedar post, signs attached, N 57° E, 38.10 feet
- 1976 BLM dependent resurvey, in Twp. 143 N., Rge. 25 W., found 1970 USFS concrete monument 8' below surface of FS road #126 and witnessed as follows:  
Balsam 7" N 44° E, 129 links, (85.14 feet)      USGS ref. mon., N 85° W, 50 links, (33.00 feet)  
USGS Bench Mark, N 44° W, 84 links, (55.44 feet)
- 9-2-1981 A Certificate of Location of Government Corner was filed on the 1970 USFS data, in Cass County Recorders Office as Document Number 259045.
- 9-30-1982 K. Whitehorn USFS, found the 1970 USFS monument in a survey of the South line of Section 31, Twp. 144 N., Rge. 25 W., a Certificate of Survey was filed in Cass County Recorders Office as Document Number 277427.
- 1984 Personnel from Advance Surveying, found the 1970 USFS monument in a survey of Twp. 144 N., Rge. 25 W. A Certificate of Survey was filed in Itasca County Recorders Office as Document Number 372756.
- 5-2-1984 G. Kosenko, USFS found 1970 USFS monument and the following witnesses:  
White Spruce 11" N 46° E, 85.15 feet      White Oak 9" S 28° E, 112.91 feet  
He replaced the reference monument, and added the following witnesses:  
"X" Rock 3'x 2' N 66° W, 70.15 feet      Aspen 11" S 44° W, 122.16 feet
- 7-25-1990 Personnel from Kovanen & Osufsen Inc. found 1970 USFS monument and witnesses as follow:  
White Oak 9" S 28° E, 112.91 feet      Spruce 14" N 48° E, 85.15 feet  
Aspen 12" S 44° W, 122.16 feet      Aspen stump S 84° W, 95.30 feet to blaze  
USCG Bench Mark, N 42° W, 55.13 feet      USGS Ref. Monument, N 85° W, 33.00 feet  
Cedar post, 4"x 4" N 57° E, 38.4 feet      "X" Rock 3'x 2' N 66° W, 70.15 feet  
We add witness as following:  
Maple 8" N 44° W, 121.62 feet      Steel post with sign attached, West 34.0 feet

This position is traceable to the original GLO corner.