

CERTIFICATE OF LOCATION OF GOVERNMENT CORNER

East Quarter Corner of Section 25, Township 143N, Range 26W, 5th P.M.

STATE OF MINNESOTA, County of Cass

At the corner location shown on the sketch:

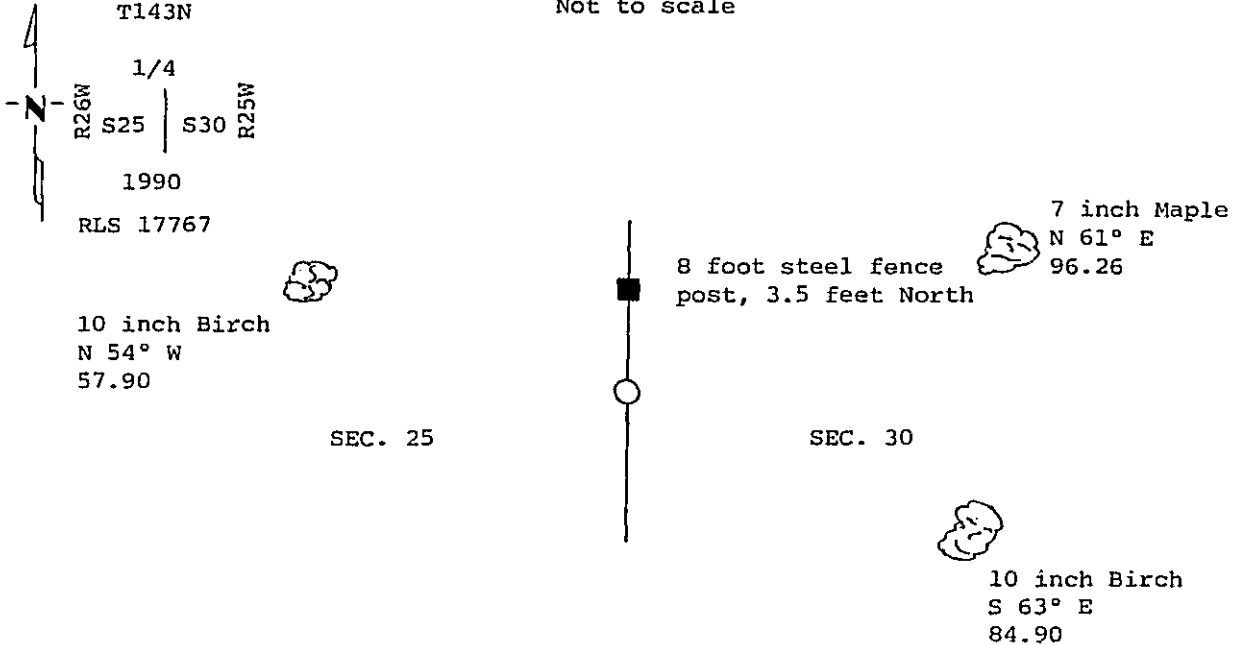
- On _____ found a _____
DATE
- left monument as found, lowered monument, removed monument (explain)
- On 6/27/90 placed a 2 inch x 54 inch Brass Cap Monument over an 8 foot
DATE
long steel fence post driven into swamp for corner.

Monument marked

SKETCH OF REFERENCE TIES

T143N

Not to scale



Bearings are true

All trees are scribed, painted with a 30d spike in side and USFS 54-3 tag.

Statement of evidence relative to this corner location is on back of page.

325146

I hereby certify that this survey, plan or report was prepared by me or under my direct supervision and that I am a duly Registered Land Surveyor under the laws of the State of Minnesota.

OFFICE OF THE COUNTY RECORDER
County of Cass

I hereby certify that this document was filed in the Co. Recorders office at 4:00 P.M. on the 21 day of November A.D., 19 90

County Recorder Claudia Kayler
By ms, Deputy

Date 11/14/90 Registration No. 17767

DOCUMENT NO. 325146

Statement of Evidence:

T25 East quarter corner section 25

1/4 Cor. 25 and 30 (E 1/4 Cor. Sec. 25)

- 1872 U.S. General Land Office survey set wood post for corner and the following references were noted:
Tamarack 10" S 70 degrees E, 14 Links (9.24 feet)
Aspen 14" S 81 degrees W, 11 Links (7.26 feet)
- 7-19-1966 James Ekstrom, USFS, found no evidence of corner.
- 1976 BLM dependent resurvey, found no original evidence, at proportionate distance they set a 2.5"x 28" aluminum post, with aluminum cap, and witnessed as follows:
Birch 4" N 18 degrees W, 48 Links (31.68 feet)
- 11-2-1989 Personnel from Kovanen & Osufsen Inc. traversed to search area, no evidence of corner, or BT's found.
- 6-27-1990 Personnel from Kovanen & Osufsen Inc. set a 2" x 54" brass capped monument over an 8 foot steel fence post in swamp. This position is reestablished midway and on line between the recovered NE corner of section 25 and the recovered SE corner of section 25. The following witnesses were established:
Birch 10" N 54 degrees W, 57.90 feet
Maple 7" N 61 degrees E, 96.26 feet
Birch 10" S 63 degrees E, 84.90 feet
Set 8' long steel sign post with sign attached, North 3.5 feet

This position is not traceable to the original GLO corner, but accepted as corner for lack of further evidence.