

CERTIFICATE OF LOCATION OF GOVERNMENT CORNER

MEANDER CORNER 6 Corner of Section 12, Township 140, Range 30, 5 P.M.

STATE OF MINNESOTA, County of CASS

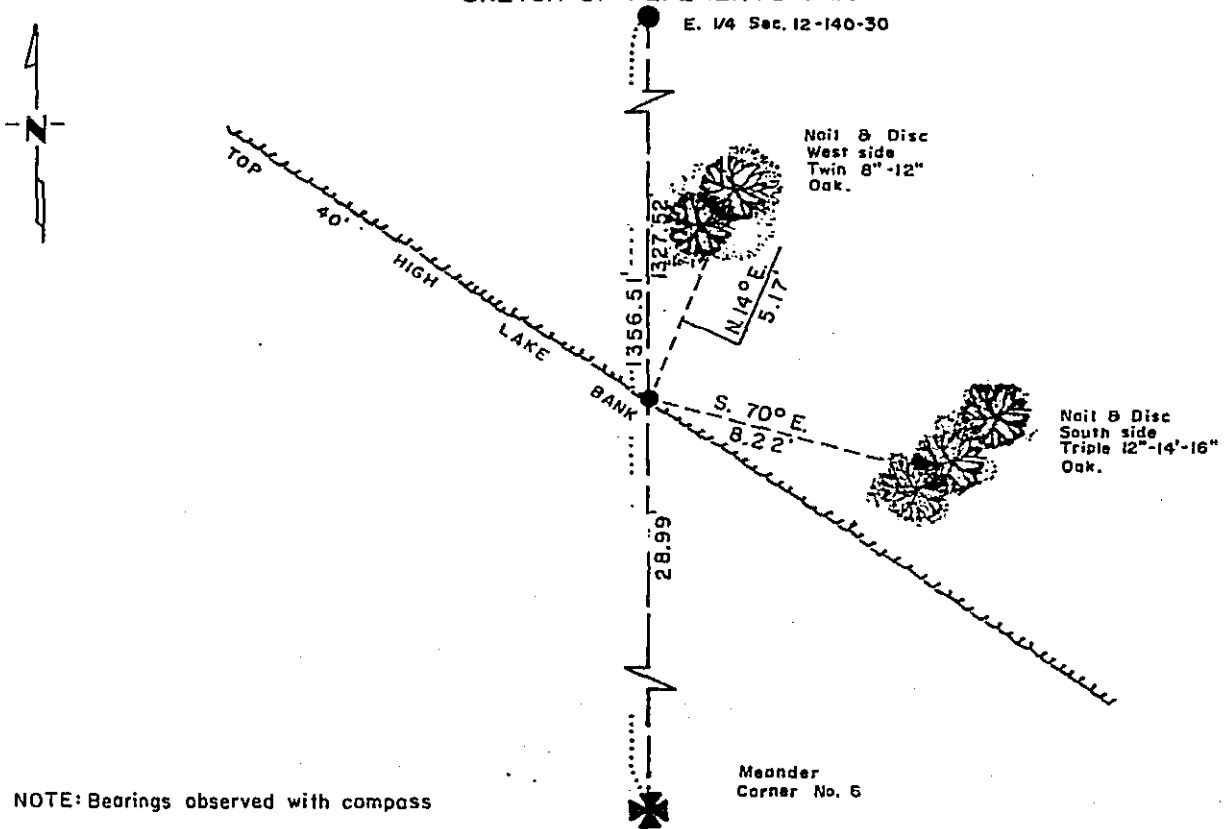
At the corner location shown on the sketch:

On 8-25-81 found a 2" Iron Pipe 28.99' North of MC No. 6

left monument as found, lowered monument, removed monument (explain)

On _____ placed a _____

SKETCH OF REFERENCE TIES



NOTE: Bearings observed with compass

Statement of evidence relative to this corner location is on back of page.

File: A-338
J.A.G.

I hereby certify that this document and the data contained herein was prepared by me or under my direct supervision.

John D. Walker 11-8-90
SIGNATURE DATE

Registration No. 16098

- Land Surveyor, Professional Engineer
 County Surveyor, County Engineer

324965
OFFICE OF THE REGISTER OF DEEDS
County of Cass

I hereby certify that this document was filed in the Reg. of Deeds office at 2:30 P. M. on the 14 day of November A.D., 19 90

Register of Deeds Claudine Kaylor
By MS, Deputy

DOCUMENT NO. 324965

Meander Corner #6 in Section 12, Township 140 North, Range 30 West

The following offices were contacted for information on this corner:
Minnesota Secretary of State
Cass County Recorder
Cass County Surveyor

- 1865 The US General Land Office field notes state that they set a post and measured to one bearing tree.
- 1947 OGEMA POINT, a plat by Gus Holmstrom, shows a monument at the sixteenth corner but no mention is made of the type of monument or Meander Corner #6. The plat shows a distance of 112.0 feet to the water.
- 1981 On August 25, the DNR searched for and found a 2" iron pipe 1327.52 feet south of the East Quarter Corner of said Section 12. OGEMA POINT showed a distance of 1318.15 to a lot corner monument. No mention of the type of monument.
- 1982 In May, the DNR Bureau of Engineering measured a distance of 5392.16 feet between the east quarter corner of section 12 and meander corner #99 on the south shore of Webb Lake. This distance compares to a GLO distance of 5357.22 feet.

The DNR determined this corner to be lost and determined it's north-south position by proportional methods between the east quarter corner of section 12 and meander corner #99. The corners east-west position was established on an extension of the line between the east quarter corner of said section 12 and the iron pipe found at the lot corner.

The position of the meander corner falls on a very steep lake bank which prohibited setting the meander corner monument. The iron pipe 28.99 feet north and on line between the meander corner and the quarter corner north was used as a witness post.