

CERTIFICATE OF LOCATION OF GOVERNMENT CORNER

MEANDER CORNER. 1 Corner of Section 13, Township 140, Range 30, 5th P.M.

STATE OF MINNESOTA, County of CASS

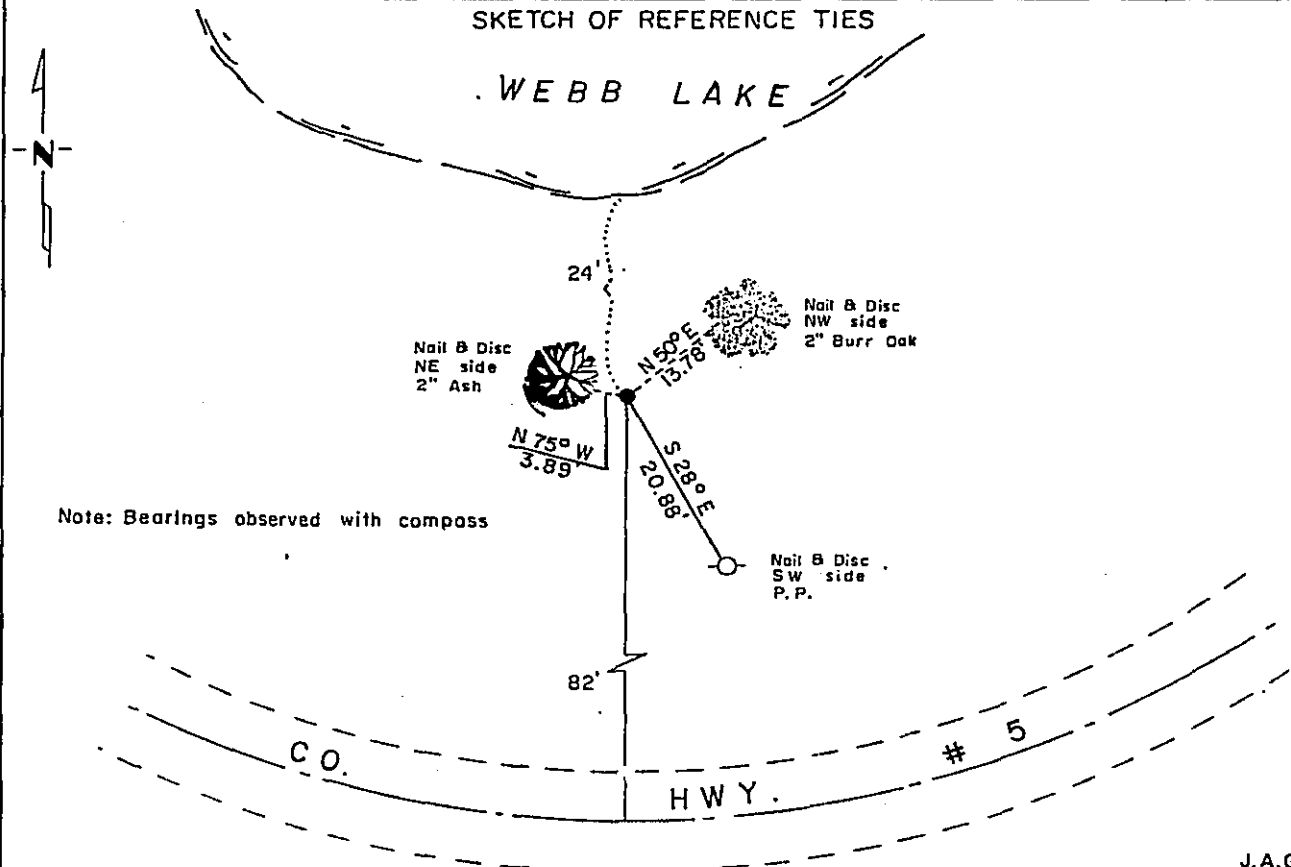
At the corner location shown on the sketch:

On 8-25-81 found a 2" Inside Dia. Iron Pipe, (up 1.4'), at top of high lake bank pipe is leaning ± 0.3' North.

left monument as found, lowered monument, removed monument (explain)

On _____ placed a _____

SKETCH OF REFERENCE TIES



Note: Bearings observed with compass

J.A.G.

Statement of evidence relative to this corner location is on back of page. FILE: A-338

I hereby certify that this document and the data contained herein was prepared by me or under my direct supervision.

John D. Walker 11-8-90
SIGNATURE DATE

Registration No. 16098

Land Surveyor, Professional Engineer

County Surveyor, County Engineer

OFFICE OF THE REGISTER OF DEEDS
County of Cass

I hereby certify that this document was filed in the Reg. of Deeds office at 2:10 P. .M. on the 14 day of November A.D., 19 90

Register of Deeds Plaudine Kingler

By m, Deputy

DOCUMENT NO. 324963

Meander Corner #1, Section 13, Township 140 North, Range 30 West

The following offices were contacted for information on this corner:
Minnesota Secretary of State
Cass County Recorder
Cass County Surveyor

- 1865 The US General Land Office field notes state that they set a post and measured to the following bearing trees: 10" Aspen S 63 W, 33.66' and an 8" Birch S 46-30 E, 22.44'.
- 1916 In Book C, page 227, survey record 426, in January 1916, E.B. Horst searched for this meander corner but could not find it due to deep snow.
- 1959 In July, W. Spain surveyed a plat in Govt Lot 4, Section 18. His plat shows an iron monument at the meander corner. No further description or procedures are available.
- 1959 In August, the DNR Bureau of Engineering located an iron pipe with the help of W. Spain and accepted it as the meander corner
- 1981 In August, the DNR again searched for and found a 2" inside diameter iron pipe and accepted it as the meander corner.